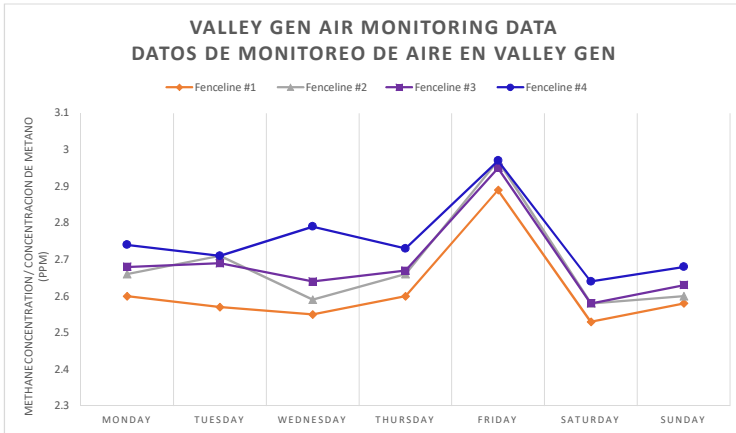


GasMet Analyzer Readings for Week of 9/6/2021 to 9/12/2021:  
 Lecturas de GasMet Analyzer para la semana 9/6/2021 to 9/12/2021:



Day	Date	Time of Recording	Wind Direction/ strength (MPH)	Temperature (F)	Location of Recording	Methane concentration (ppm)
Día	Fecha	Hora de Grabación	Dirección de viento/velocidad	Temperatura (F)	Ubicación de grabación	Concentración de metano
Monday / lunes	9/6/2021	9:00am	ESE, SSW, SSW, NE / 1.5 - 1.7	81.3 - 84.9	Fenceline #1	2.60
					Fenceline #2	2.66
					Fenceline #3	2.68
					Fenceline #4	2.74
Tuesday / martes	9/7/2021	1:00pm	S, SSW, SSE, SW / 0.6 - 3.2	86.4 - 86.9	Fenceline #1	2.57
					Fenceline #2	2.71
					Fenceline #3	2.69
					Fenceline #4	2.71
Wednesday / miércoles	9/8/2021	5:00pm	SSE, SE, ESE, SW / 1.0 - 2.7	93.6 - 95.9	Fenceline #1	2.55
					Fenceline #2	2.59
					Fenceline #3	2.64
					Fenceline #4	2.79
Thursday / jueves	9/9/2021	9:00pm	NNE, WSW, ESE, SSE / 0.8 - 3.0	77.9 - 79.9	Fenceline #1	2.60
					Fenceline #2	2.66
					Fenceline #3	2.67
					Fenceline #4	2.73
Friday / viernes	9/10/2021	9:00am	SSE, S, ENE, S / 0.2 - 1.7	87.7 - 89.5	Fenceline #1	2.89
					Fenceline #2	2.97
					Fenceline #3	2.95
					Fenceline #4	2.97
Saturday / sábado	9/11/2021	1:00pm	SSE, SW, ESE, SSE / 2.5 - 3.8	91.5 - 93.7	Fenceline #1	2.53
					Fenceline #2	2.58
					Fenceline #3	2.58
					Fenceline #4	2.64
Sunday / domingo	9/12/2021	5:00pm	SSE, SW, SSW, S / 3.6 - 5.0	91.0 - 93.1	Fenceline #1	2.58
					Fenceline #2	2.60
					Fenceline #3	2.63
					Fenceline #4	2.68

