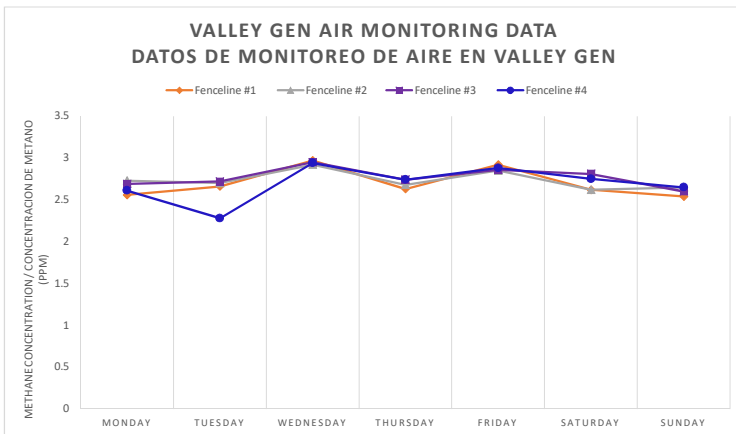


GasMet Analyzer Readings for Week of 9/27/2021 to 10/03/2021:

Lecturas de GasMet Analyzer para la semana 9/27/2021 to 10/03/2021:



Day	Date	Time of Recording	Wind Direction/ strength (MPH)	Temperature (F)	Location of Recording	Methane concentration (ppm)
Día	Fecha	Hora de Grabación	Dirección de viento/velocidad	Temperatura (F)	Ubicación de grabación	Concentración de metano
Monday / lunes	9/27/2021	9:00am	ESE, WNW, ESE, WNW / 0.6 - 2.4	62.8 - 64.0	Fenceline #1	2.56
					Fenceline #2	2.73
					Fenceline #3	2.69
					Fenceline #4	2.61
Tuesday / martes	9/28/2021	1:00pm	E, SE, S, SE / 2.1 - 8.1	72.5 - 82.6	Fenceline #1	2.66
					Fenceline #2	2.70
					Fenceline #3	2.72
					Fenceline #4	2.28
Wednesday / miércoles	9/29/2021	5:00pm	S, SE, SE, S / 3.2 - 6.1	70.4 - 71.6	Fenceline #1	2.97
					Fenceline #2	2.92
					Fenceline #3	2.95
					Fenceline #4	2.94
Thursday / jueves	9/30/2021	9:00pm	N, NW, NW, NW / 0.4 - 3.6	68.0 - 70.6	Fenceline #1	2.63
					Fenceline #2	2.68
					Fenceline #3	2.74
					Fenceline #4	2.74
Friday / viernes	10/1/2021	9:00am	SSE, SSW, SSW, W / 1.2 - 2.6	90.4 - 92.5	Fenceline #1	2.92
					Fenceline #2	2.85
					Fenceline #3	2.86
					Fenceline #4	2.88
Saturday / sábado	10/2/2021	1:00pm	SE, S, S, SE / 0.0 - 3.2	85.6 - 89.6	Fenceline #1	2.62
					Fenceline #2	2.62
					Fenceline #3	2.81
					Fenceline #4	2.75
Sunday / domingo	10/3/2021	5:00pm	S, SSW, SSW, SW / 2.6 - 4.6	90.2 - 91.0	Fenceline #1	2.54
					Fenceline #2	2.65
					Fenceline #3	2.60
					Fenceline #4	2.65

