

## Plot 2

---



Green - Habitat Flow (120 cfs)

Red - Base Flow (51 cfs)

High ground  
El. 3762.7 ~ 3764.6  
RAS WSE at STA 95+24 at  
180 cfs is 3760.0; unlikely  
to connect at high flow

2-S1  
modeled, as  
split reach

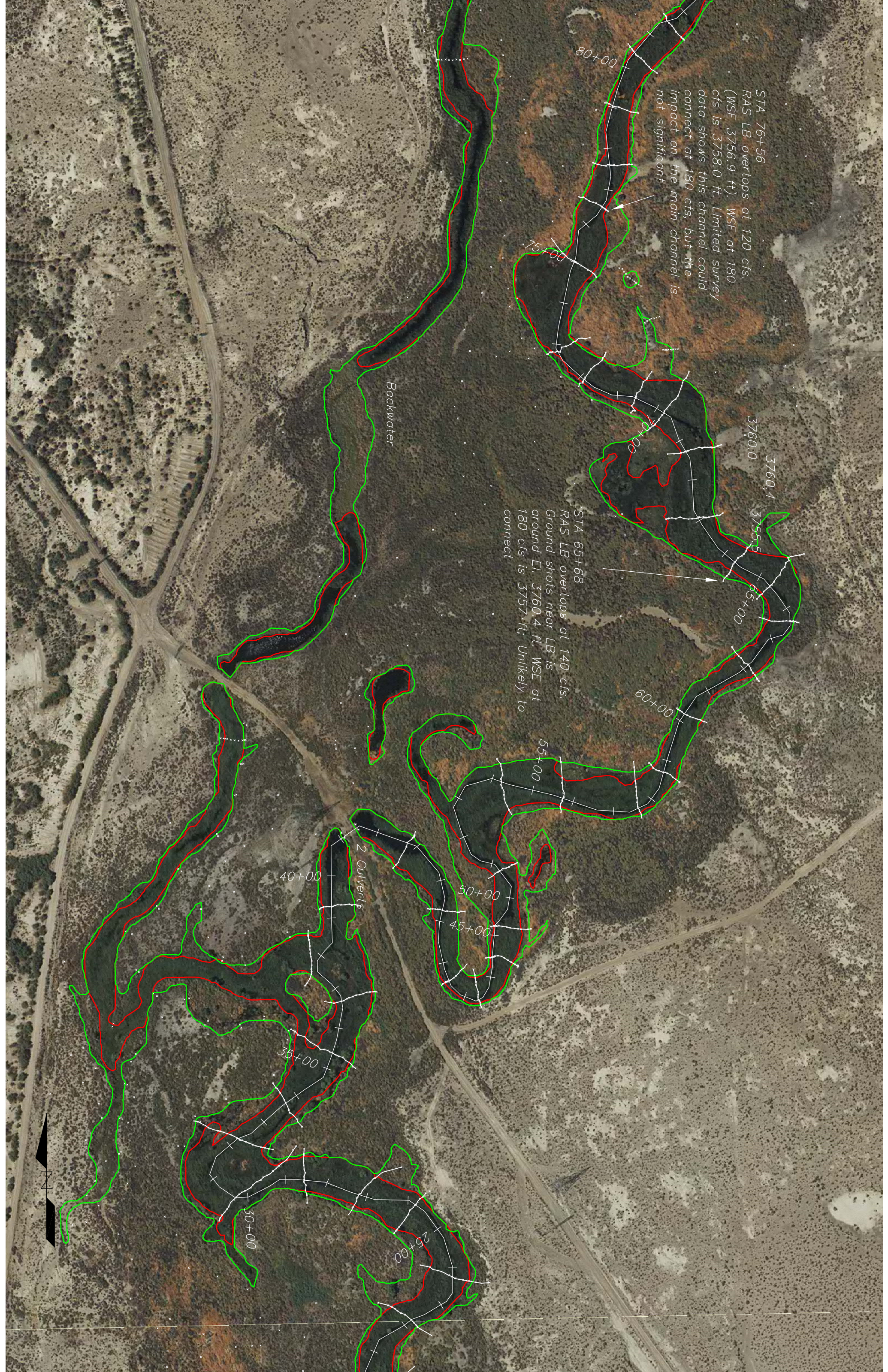


STA 76+56  
RAS LB overtops at 120 cfs.  
(WSE 3756.9 ft). WSE at 180  
cfs is 3758.0 ft. Limited survey  
data shows this channel could  
connect at 180 cfs, but the  
impact on the main channel is  
not significant

STA 65+68  
RAS LB overtops at 140 cfs.  
Ground shots near LB is  
around EI. 3760.4 ft. WSE at  
180 cfs is 3757.4 ft. Unlikely to  
connect

Backwater

2 Culverts





Backwater

STA 30+29  
Ground El. from limited  
survey data is 3756.8.  
RAS WSE at 180 cfs is  
3755.0 ft. Unlikely to  
connect

