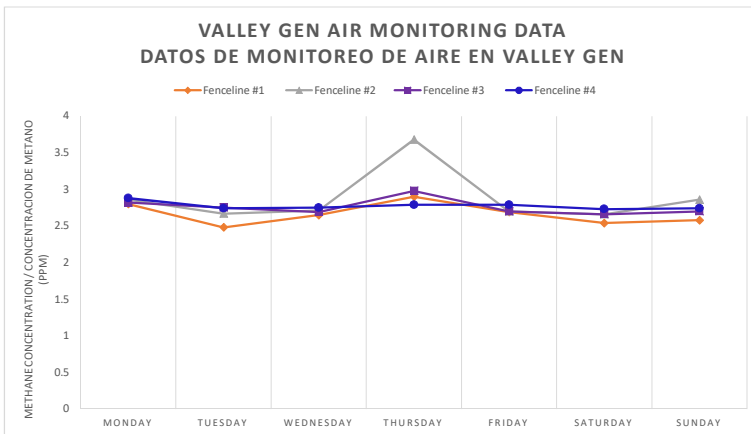


GasMet Analyzer Readings for Week of 10/11/2021 to 10/17/2021:

Lecturas de GasMet Analyzer para la semana 10/11/2021 to 10/17/2021:



Day	Date	Time of Recording	Wind Direction/ strength (MPH)	Temperature (F)	Location of Recording	Methane concentration (ppm)
Día	Fecha	Hora de Grabación	Dirección de viento/velocidad	Temperatura (F)	Ubicación de grabación	Concentración de metano
Monday / lunes	10/11/2021	9:00am	S, WSW, SSW, S / 3.3 - 3.7	64.7 - 66.6	Fenceline #1	2.80
					Fenceline #2	2.86
					Fenceline #3	2.82
					Fenceline #4	2.88
Tuesday / martes	10/12/2021	1:00pm	WNW, WNW, NW, WNW / 3.7 - 7.0	70.4 - 72.4	Fenceline #1	2.48
					Fenceline #2	2.67
					Fenceline #3	2.75
					Fenceline #4	2.74
Wednesday / miércoles	10/13/2021	5:00pm	S, SSW, SSE, SE / 4.7 - 5.3	72.2 - 73.3	Fenceline #1	2.65
					Fenceline #2	2.71
					Fenceline #3	2.69
					Fenceline #4	2.75
Thursday / jueves	10/14/2021	9:00pm	NNW, N, WSW / 0.0 - 2.0	58.2 - 60.4	Fenceline #1	2.90
					Fenceline #2	3.68
					Fenceline #3	2.98
					Fenceline #4	2.79
Friday / viernes	10/15/2021	9:00am	NW, SW, SSE, SW / 0.4 - 3.7	71.6 - 77.0	Fenceline #1	2.69
					Fenceline #2	2.70
					Fenceline #3	2.70
					Fenceline #4	2.79
Saturday / sábado	10/16/2021	1:00pm	WNW, WSW, SE, WSW / 3.1 - 5.2	84.6 - 86.2	Fenceline #1	2.54
					Fenceline #2	2.66
					Fenceline #3	2.66
					Fenceline #4	2.73
Sunday / domingo	10/17/2021	5:00pm	S, WSW, S, SSW / 4.1 - 5.6	62.9 - 66.5	Fenceline #1	2.58
					Fenceline #2	2.86
					Fenceline #3	2.70
					Fenceline #4	2.74

