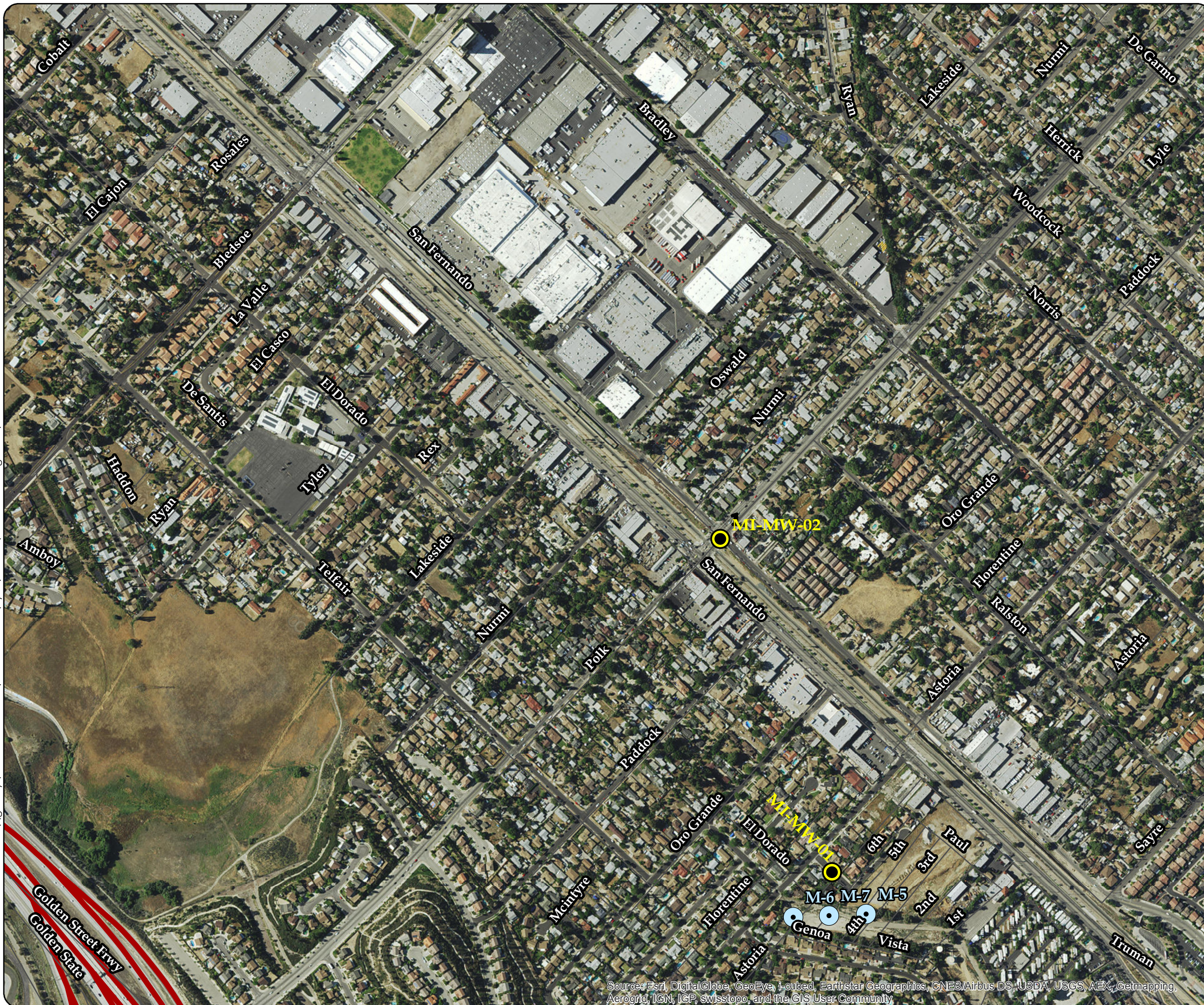


Document Path: \\galaxy\Water Resources\GroundWater\Kyle\ArcGIS\Pollock Investigation\Mission MWs.mxd


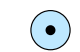


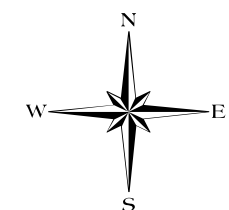
# LADWP Mission Wellfield Proposed Monitoring Wells



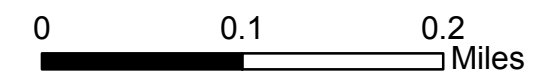
## Water Quality Groundwater Remediation

### Legend

-  Proposed MWs
-  Mission Wells



Plume Source: EPA 2010 Chrome Shallow



Source: Esri, DigitalGlobe, GeoEye, i-cubed, Earthstar Geographics, CNES/Airbus DS, USDA, USGS, AEX, Getmapping, Aerogrid, IGN, IGP, swisstopo, and the GIS User Community