



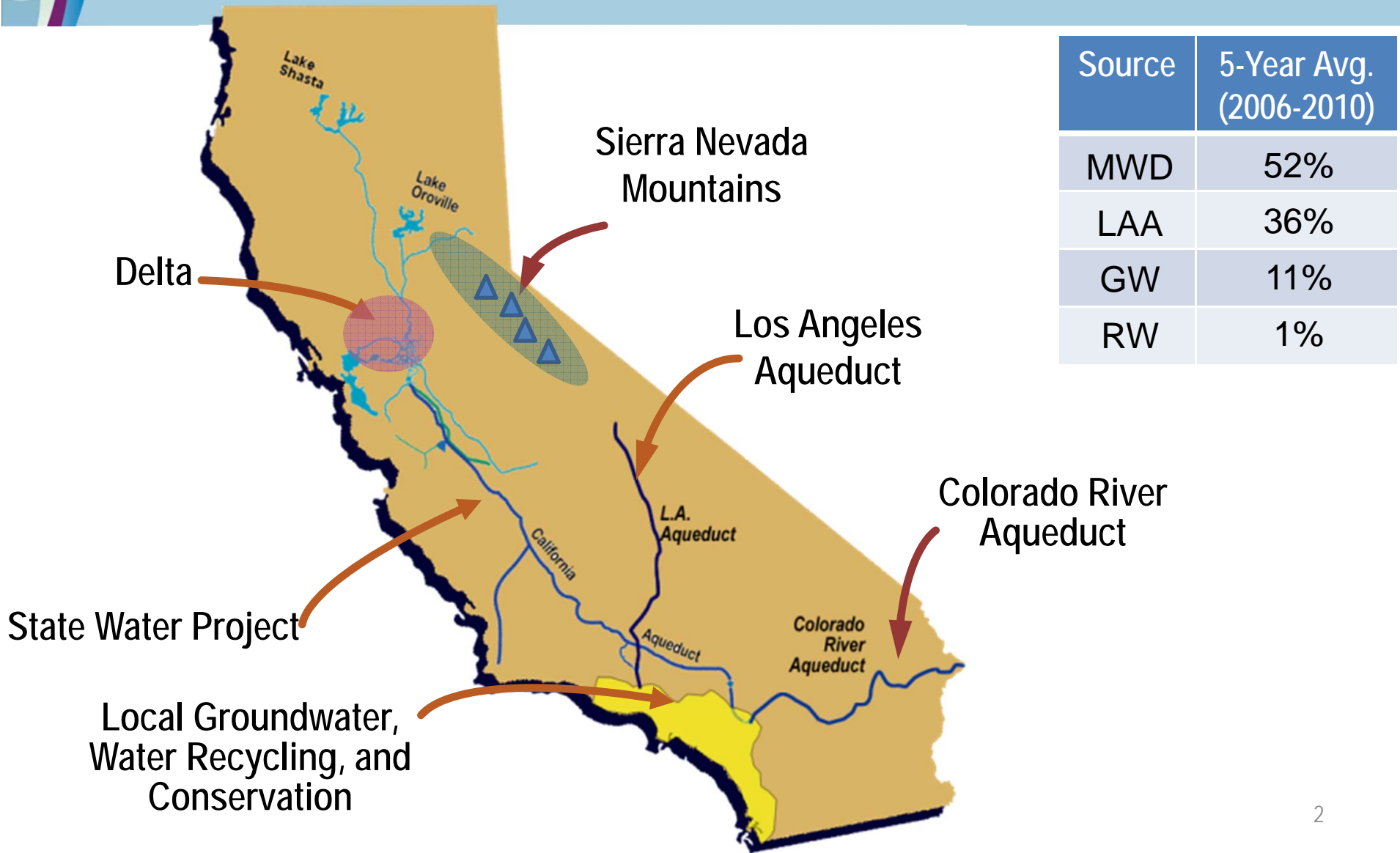
RECYCLED WATER FOR LOS ANGELES

Update on Recycled Water Program and
Groundwater Replenishment Project

Paul Liu, LADWP and Evelyn Cortez-Davis LADWP
LADWP NC MOU Committee
Los Angeles Neighborhood Council Coalition

August 3, 2013

L.A. Depends on Imported Water





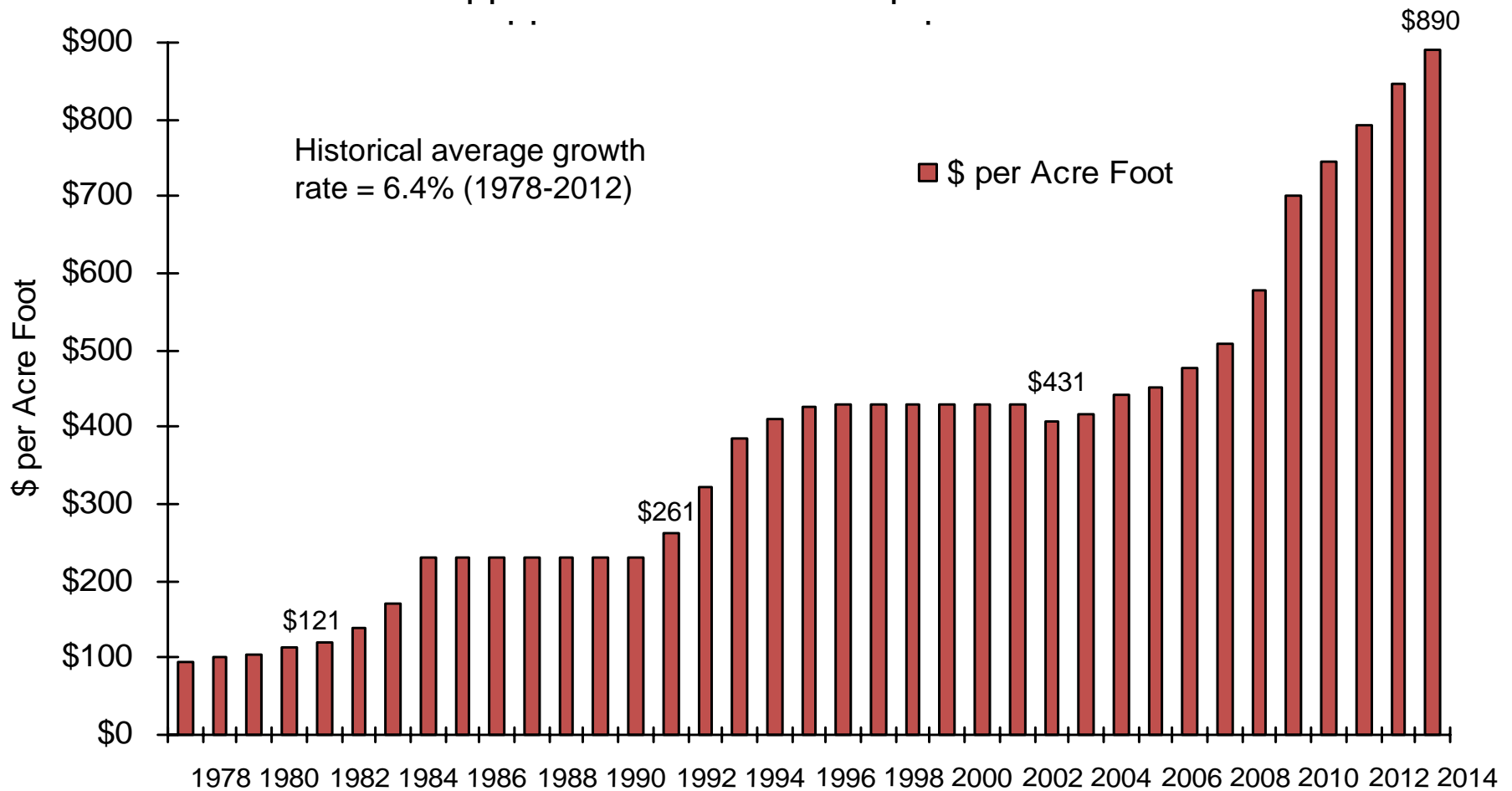
Water Supply Challenges



- Climate change impacts
- Regulatory / Environmental Restriction
- Water/energy nexus
- Contaminated groundwater
- Costs

MWD Water Prices

Historical and Approved MWD Tier 1 Imported Treated Water Rates



Local Water Supply Initiatives



Increase water conservation

Enhance stormwater capture

Accelerate groundwater cleanup

Increase water recycling





What is Recycled Water?

Highly treated wastewater that undergoes multiple treatment steps

Meets strict **health and safety** laws

Monitored and tested 24/7





30 Years of Water Recycling in L.A.

Irrigation & industrial uses (“non-potable”)

Seawater intrusion barrier (“indirect potable”)

Lakes and river habitat





Increased Water Recycling

Recycle 59,000 AFY by 2035

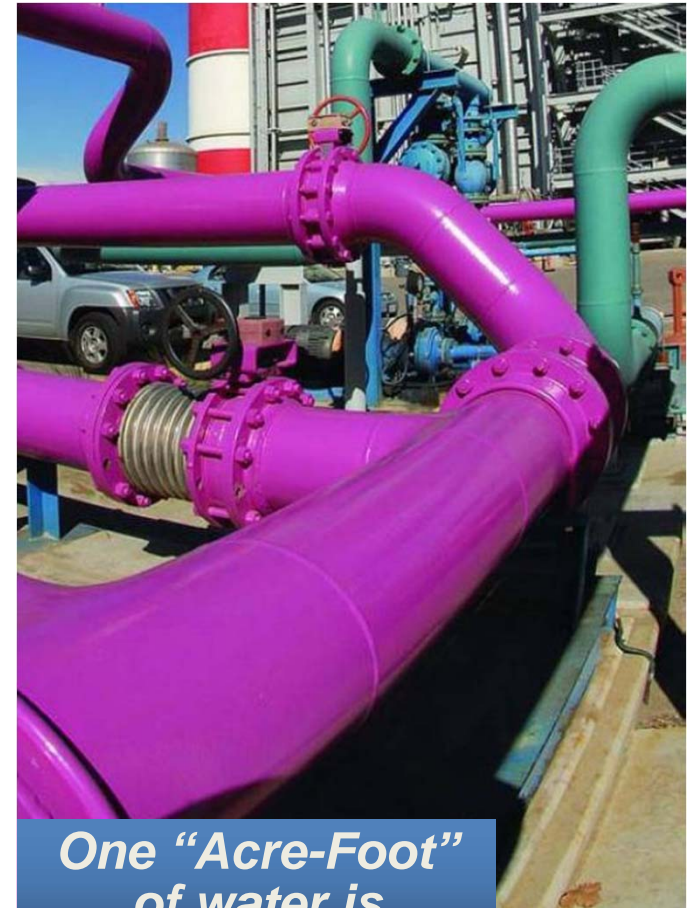
*Guiding Principles to Accelerate Goals –
adopted October 2012*

**Recycled Water Master Planning
Completed 2012**

Key Strategies:

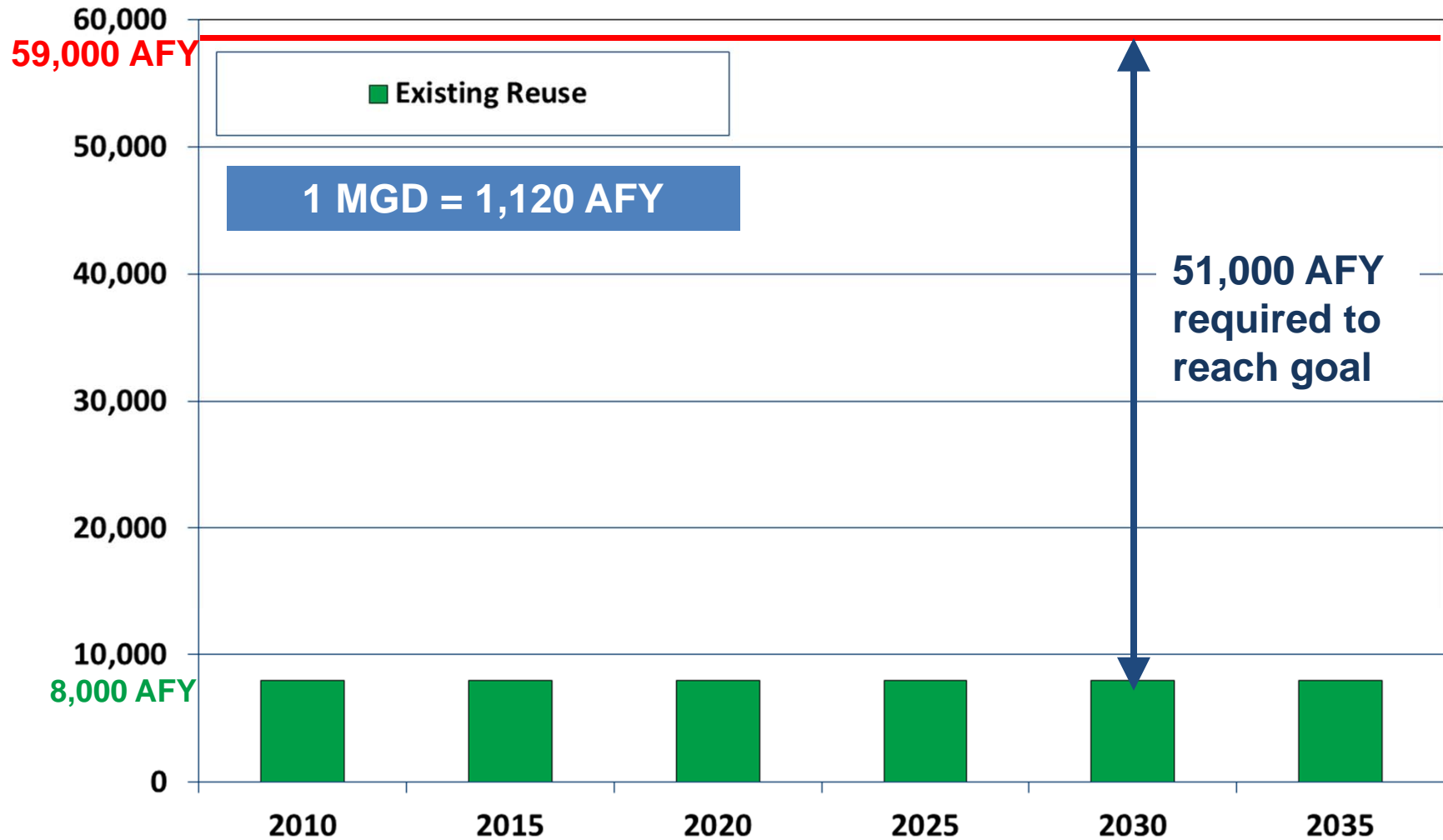
Groundwater replenishment

*Expand recycled water distribution
(purple pipe)*



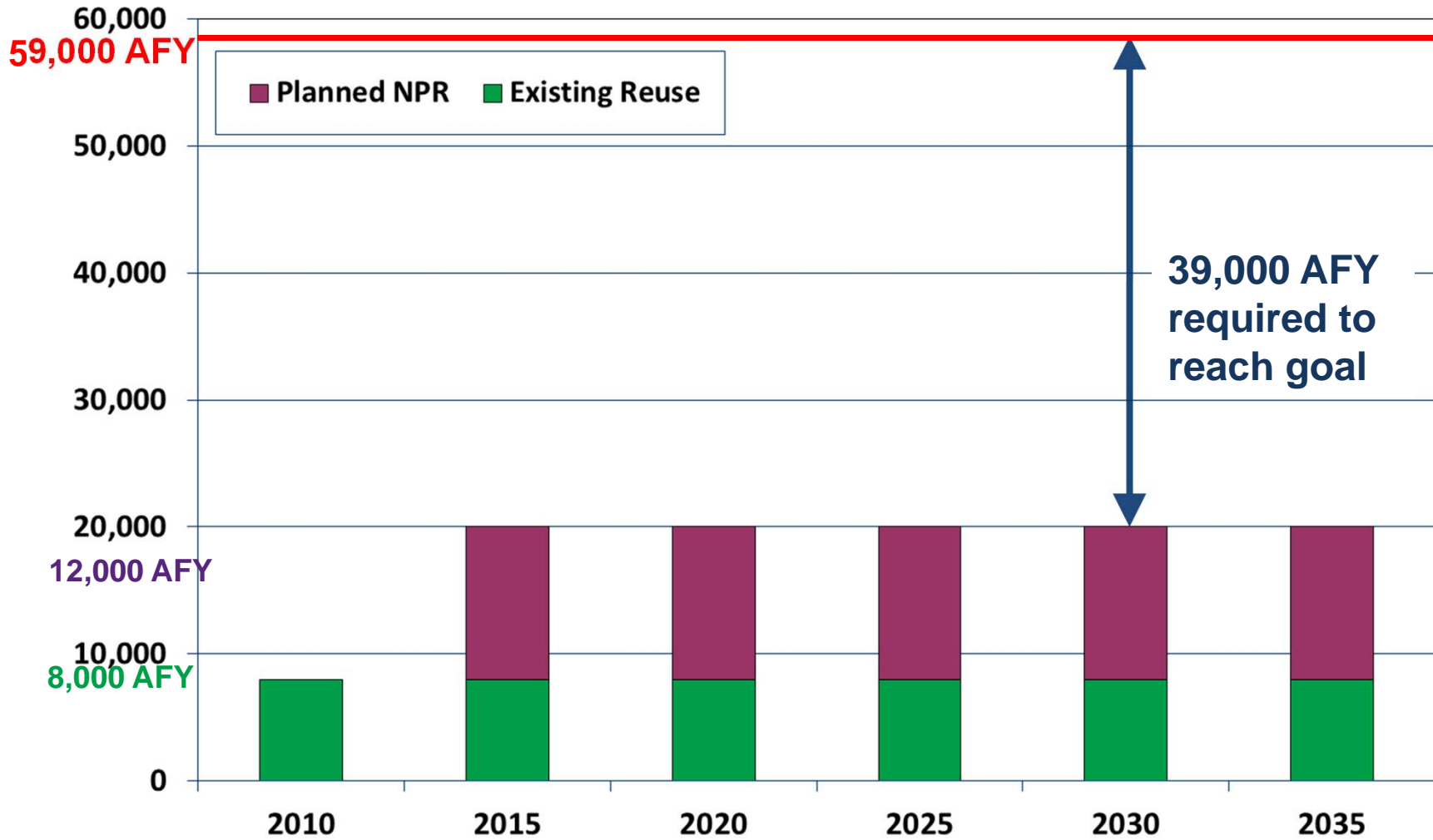
**One “Acre-Foot”
of water is
approximately
326,000 gallons**

UWMP: Recycled Water Milestones



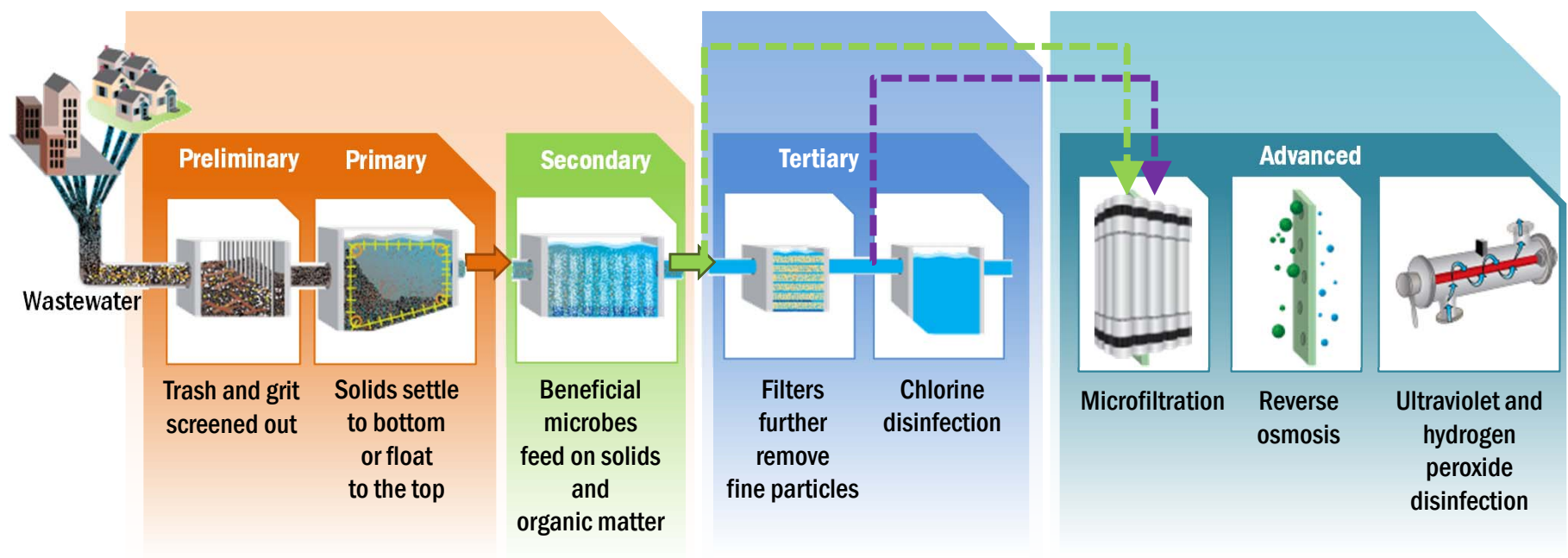


UWMP: Recycled Water Milestones



How Recycled Water is Produced

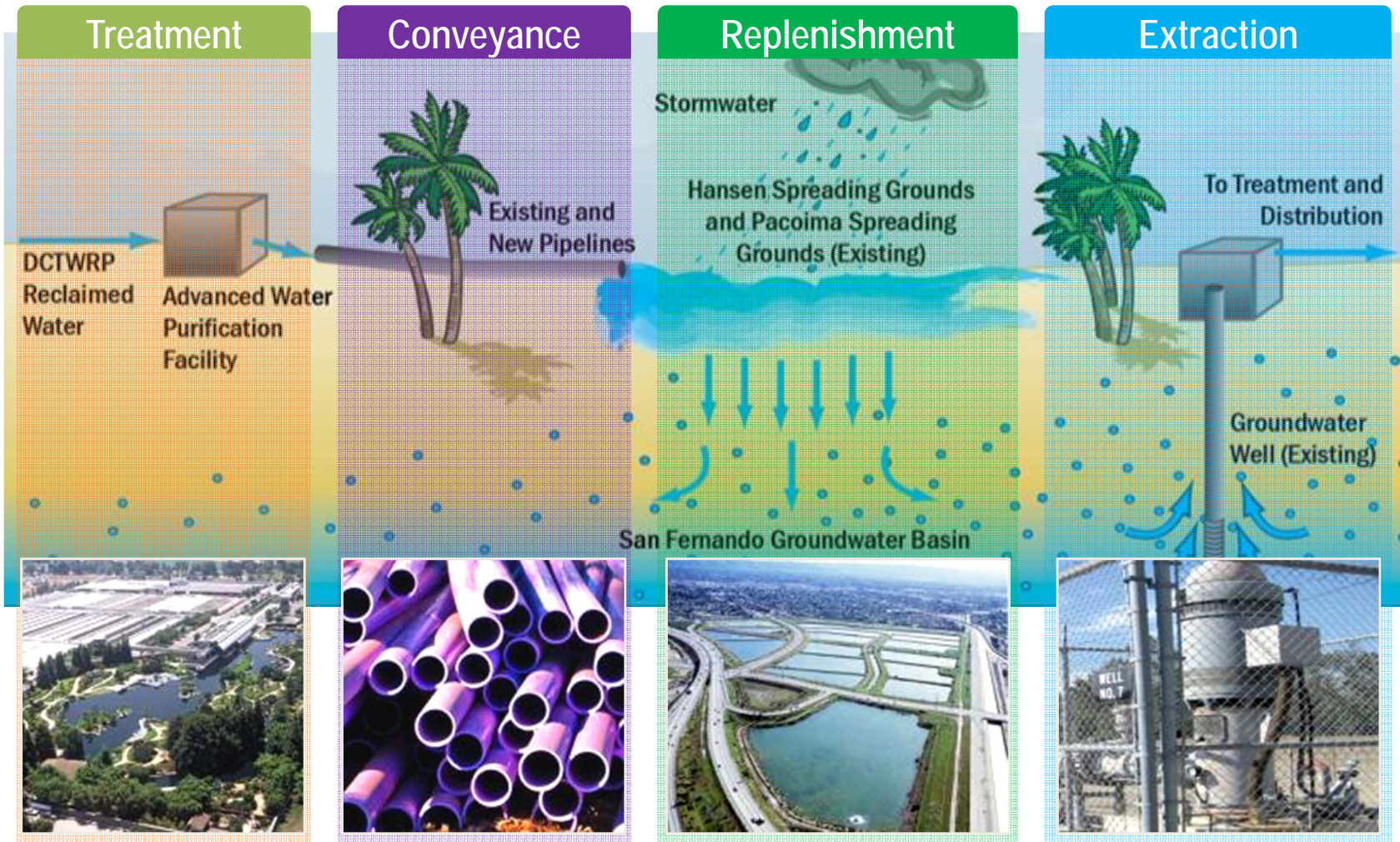
**GWR GOAL:
up to 30,000 AFY**



Highly purified: **exceeding drinking water standards**

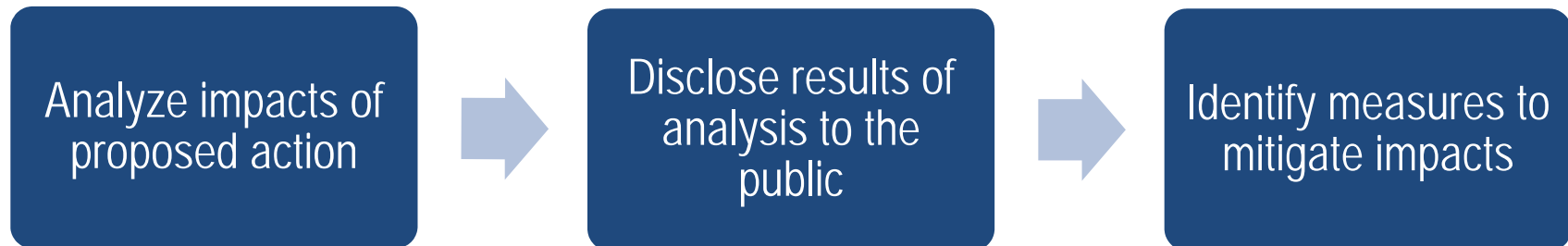
Groundwater Replenishment

HOW IT WORKS:



What is NEPA for the GWR Project?

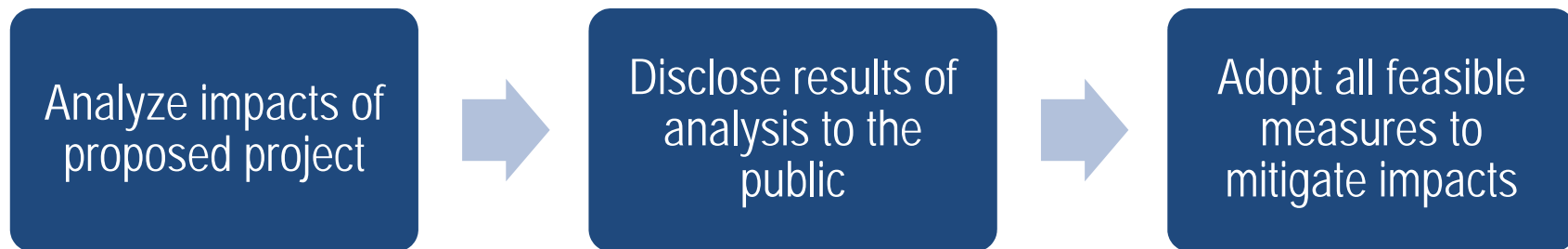
- National Environmental Policy Act (1970)
- Agencies must follow protocol to prepare an Environmental Assessment:



NEPA establishes a national policy promoting the protection of the environment

What is CEQA for the GWR Project?

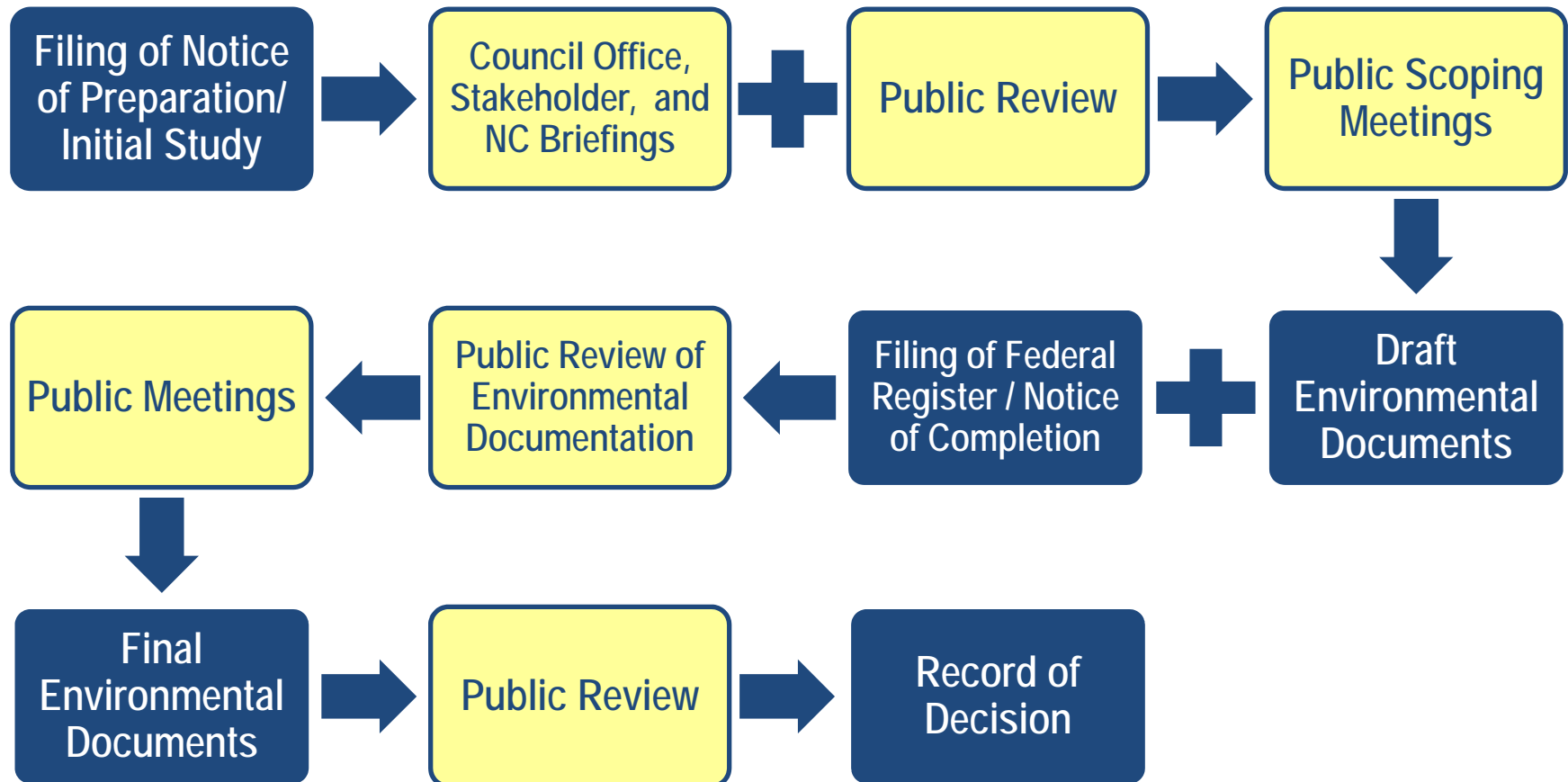
- California Environmental Quality Act (1970)
- Agencies must follow protocol to prepare an Environmental Assessment:



CEQA extends NEPA's principles to every agency's decision-making process for projects in California



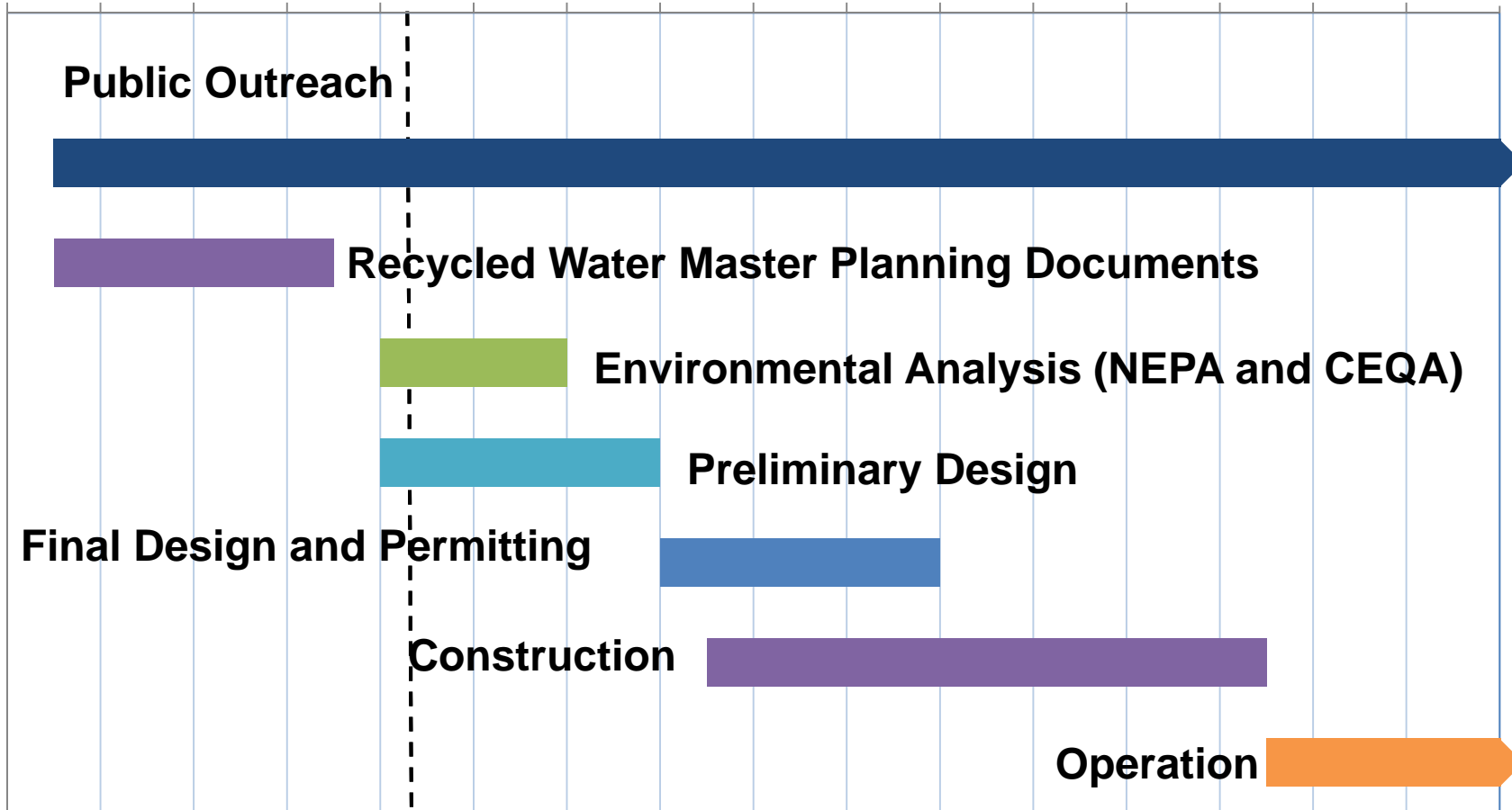
Overview of Combined NEPA/CEQA Process





GWR Project Timeline

2009 2010 2011 2012 2013 2014 2015 2016 2017 2018 2019 2020 2021 2022 2023 2024



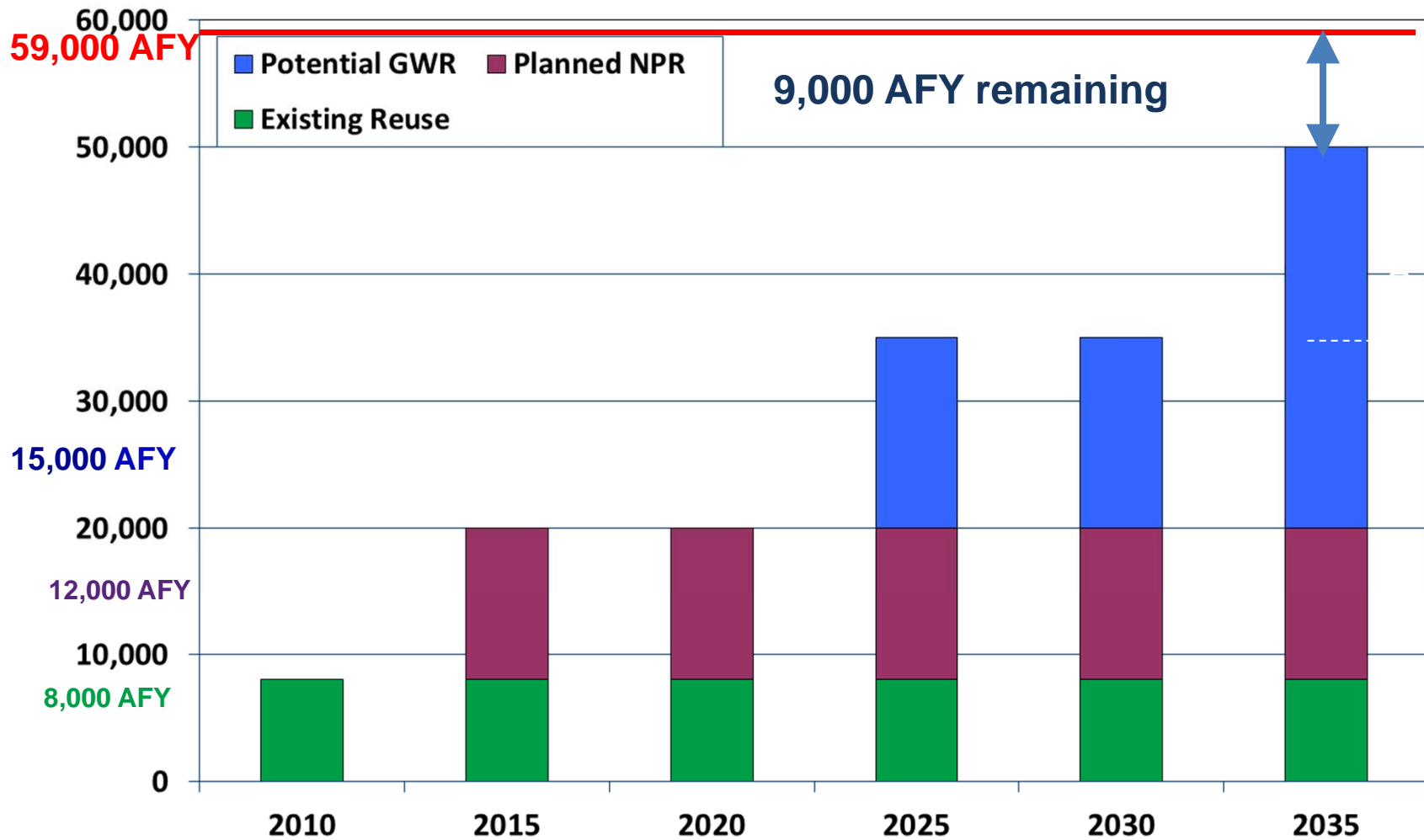


GWR Project Tentative Timeline for Environmental Analysis

- Notice of Preparation for Review Mid August 2013
- Public Comments Due End of September 2013
- Public Scoping Meetings As Early as
September 2013
- Draft Environmental Documents Mid/Late 2014



UWMP: Recycled Water Milestones

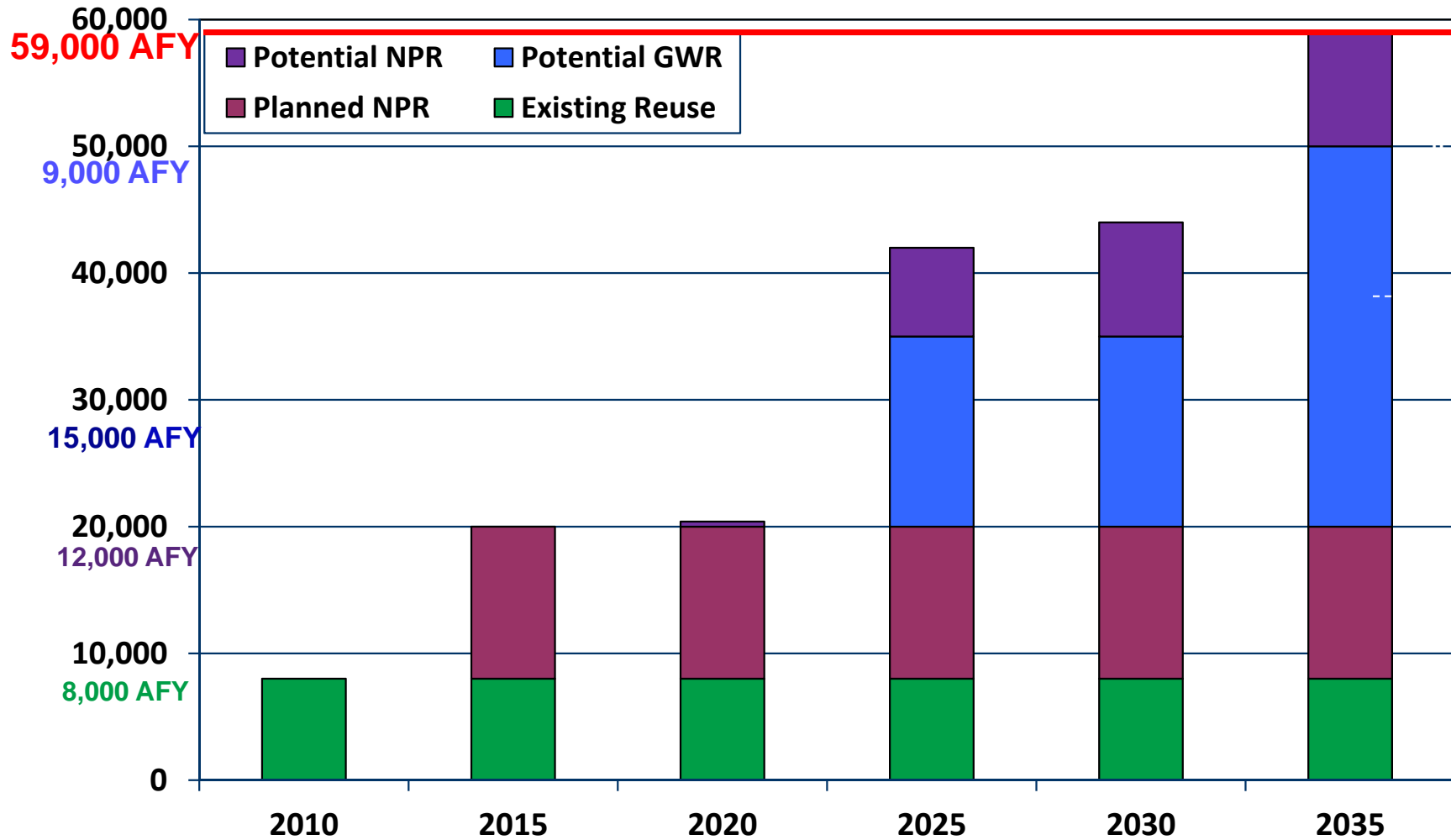


Purchase Recycled Water From Neighboring Utilities





UWMP: Recycled Water Milestones



Long-Term Concepts

- Envision beyond 59,000 AFY





Long-Term Concepts Report

Hyperion Treatment Plant



Possible site of
AWPF

290,000 Acre Feet per Year
Discharged into Ocean



RWMP Next Steps

- Implement Groundwater Replenishment
 - Donald C. Tillman Water Reclamation Plant
- Maximize Non-potable Reuse
 - Los Angeles Glendale Water Reclamation Plant
 - Terminal Island Water Reclamation Plant
- Explore Potable Reuse Alternatives
 - Hyperion Treatment Plant

Explore Acceleration of these Goals

Evaluate Rate Impacts



Our Outreach Efforts: Open, Transparent Process

Briefings with L.A. Stakeholders
Recycled Water Advisory Group
Recycled Water Forums
Briefings with Elected Officials





Expert Panel Support Los Angeles' Groundwater Replenishment

- 12-Member Panel
- Chaired by Dr. Mike Stenstrom – UCLA
- Most Recent Meeting: February 2013



“The Panel supports the City’s efforts on potable reuse in the San Fernando Basin, including the groundwater replenishment project based on the proposed full advanced treatment.

Potable reuse provides a significant opportunity to provide a new and locally-controlled sustainable water supply for the residents of Los Angeles.”

– Independent Advisory Panel Report, April 2013

National Water Research Institute





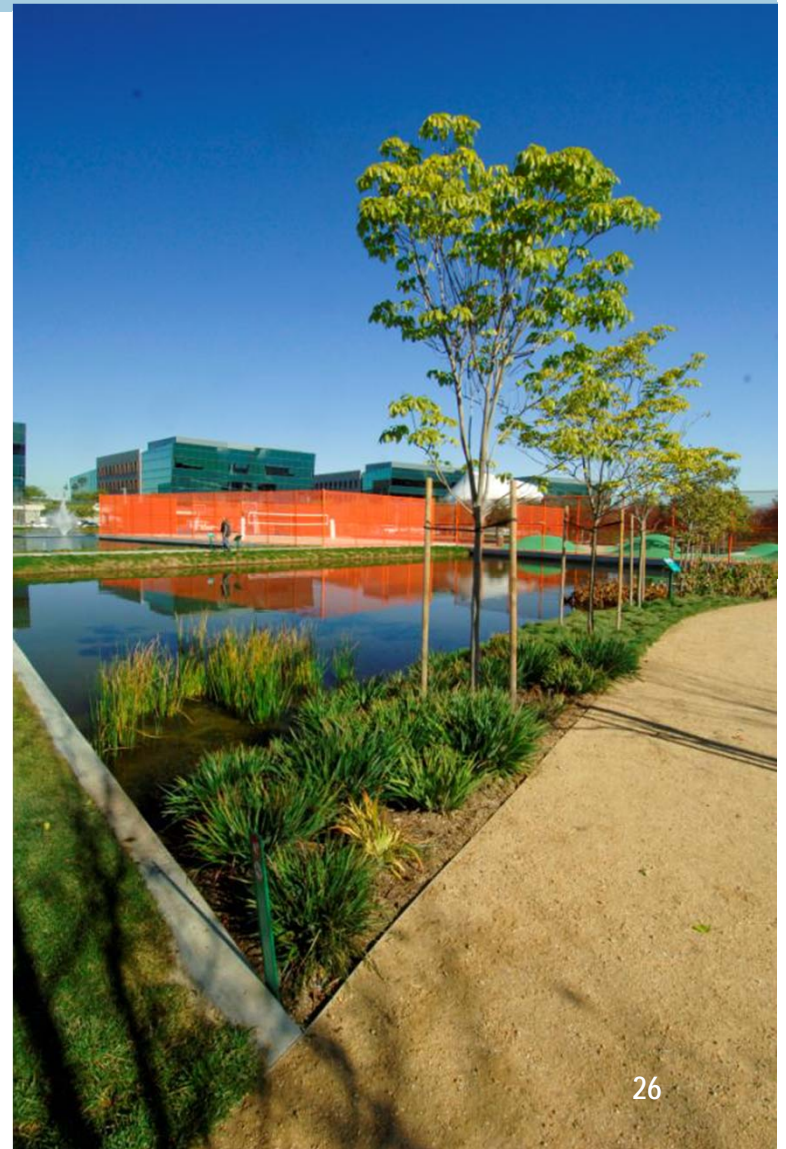
Benefits of Recycled Water

Safe – Meets regulatory requirements

Local – Increases sustainability

Reliable – Drought proof source

Costs less than forecasted MWD rates





The City of Los Angeles seeks your **support** for the Recycled Water Program, including the Groundwater Replenishment Project.





How You Can Play a Part

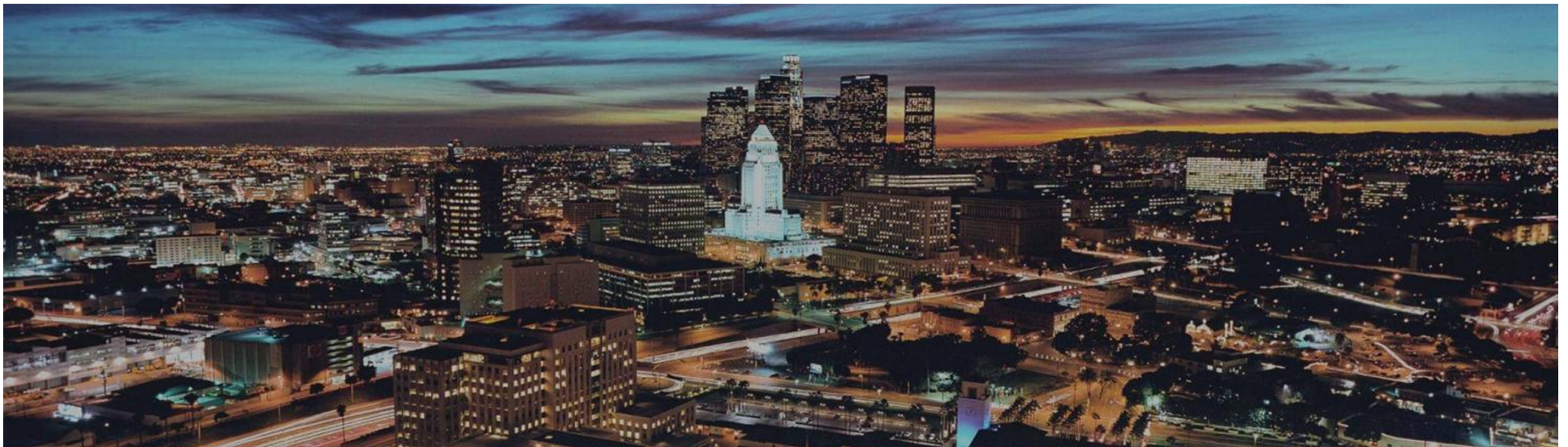
Stay updated on our website: www.ladwp.com

E-mail request for a presentation: serge.haddad@ladwp.com

Spread the word with other stakeholders

Take tours of water reclamation plants

Fill out a support card or write a support letter





QUESTIONS?

Contact Information:

Paul Liu

paul.liu@ladwp.com

Evelyn Cortez-Davis

evelyn.cortez-davis@ladwp.com

Key Contact:

Serge Haddad

serge.haddad@ladwp.com

(213) 367-8774