

# Fact Sheet

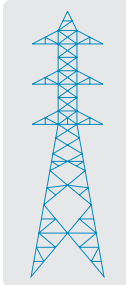
INFORMATIONAL PUBLIC MEETINGS • FEBRUARY 2009

The City of Los Angeles Department of Water and Power (LADWP) is proposing the Barren Ridge Renewable Transmission Project (BRRTP) to access clean, renewable energy resources in the Tehachapi Mountain and Mojave Desert areas of Southern California.

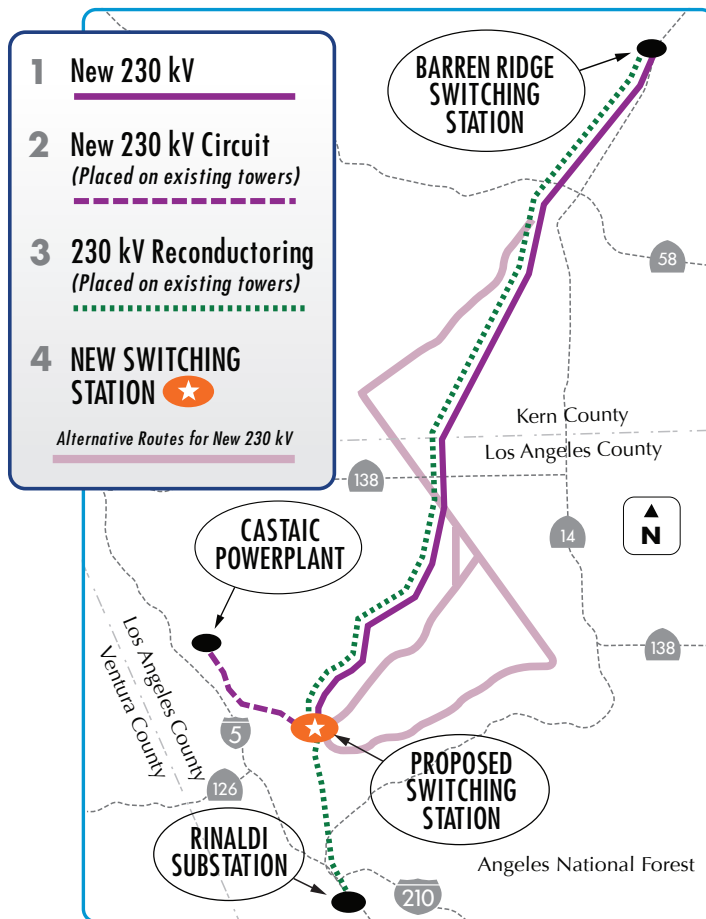
## PROJECT DESCRIPTION

1. New double-circuit 230 kilovolt (kV) transmission line from the LADWP Barren Ridge Switching Station to Haskell Canyon;
2. New 230 kV transmission circuit on existing double-circuit structures from Haskell Canyon to the Castaic Power Plant;
3. Upgrade of the existing Owens Gorge-Rinaldi 230 kV transmission line with larger capacity conductors between the Barren Ridge Switching Station and the Rinaldi Substation;
4. New electrical switching station in Haskell Canyon.

230 kV double-circuit structure



## Proposed Project Map



In accordance with both the National Environmental Policy Act (NEPA) and the California Environmental Quality Act (CEQA), a joint Environmental Impact Statement (EIS) and Environmental Impact Report (EIR) will be prepared to identify, analyze and disclose potential environmental effects of the proposed Project. The US Department of Agriculture, Forest Service (Forest Service) and Department of the Interior, Bureau of Land Management (BLM) are the federal co-lead agencies responsible for the preparation of the EIS according to NEPA. LADWP is the state lead agency responsible for the preparation of the EIR according to CEQA.

## PURPOSE AND NEED

LADWP's purpose and need for the BRRTP is to:

- Reduce the environmental impacts associated with greenhouse gas emissions and create a more sustainable environment.
- Assist LADWP to meet Renewable Portfolio Standard goals.
- Allow interconnection and expansion of LADWP's renewable energy in the Tehachapi Mountains and Mojave Desert areas.
- Increase LADWP's system reliability and flexibility in the utilization of renewable energy sources.
- Enable the delivery of renewable energy
- Meet electrical energy demands.

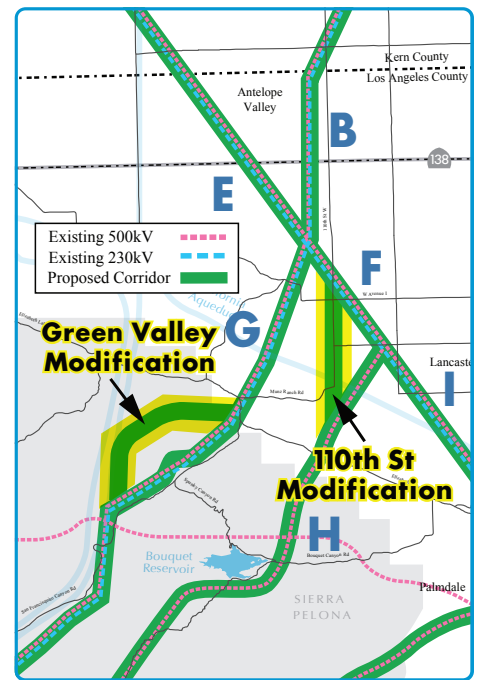
The Forest Service and BLM need is to respond to the applications from LADWP for a Special Use Authorization, Right of Way Grant, and amendments to existing authorizations and grants.

## SCOPING

Scoping was conducted to determine the scope of issues to be addressed and to identify the range of actions, alternatives, mitigation measures, and significant effects to be analyzed in the Draft EIS/EIR. Seven scoping meetings were held in April and May 2008.

During scoping, two routing modifications were proposed by the public. The first alternative is located west of Green Valley, along an existing fire road within the Angeles National Forest. The second modification would parallel 110th Street between Segments F and H.

This modification was proposed to follow property lines and avoid bisecting private property in the area.



## Modifications Identified From Public Scoping

Over 200 comments were received during the public scoping period. These comments assisted the Forest Service, BLM and LADWP to determine the scope and significant issues to be analyzed in the Draft EIS/EIR. Seven environmental resources were identified as having a potential to have significant issues: biological resources, cultural resources, land use, recreation, visual quality, earth resources, and water resources. These significant issues will be used to formulate project alternatives, prescribe mitigation measures, and analyze environmental effects.

## BARREN RIDGE RENEWABLE TRANSMISSION PROJECT



## ENVIRONMENTAL TECHNICAL STUDIES

Environmental Technical Studies are being conducted to identify potential impacts to resources caused by construction, maintenance and operation of the proposed project. These studies include all the resources that were identified to have significant issues as well as agriculture, air quality, noise, public service and utilities, socioeconomics, and transportation and traffic.

Biological surveys started last spring, are continuing this season, and will be used in defining potential impacts from the project.

## SCREENING OF ROUTING ALTERNATIVES

The project team is evaluating the feasibility of all routing opportunities for the proposed double-circuit 230 kV transmission line. Through extensive and on-going consideration, the following routing opportunities will be recommended to the lead agencies for elimination from further study in the development of the EIS/EIR.

**Segment D** was identified as a preliminary routing opportunity from the Antelope Valley to the Castaic Power Plant. It is being recommended for elimination for several reasons:

- Overloading of existing electrical facilities south of the Castaic Power Plant;
- Significant modifications to the Castaic Power Plant and expansion of right-of-way south of Castaic would be required;
- Impacts to the Old Ridge Route Road, a historical district on the National Register of Historic Places;
- Unstable terrain and geology would create many difficulties and environmental impacts during construction, operation and maintenance of the project.

**The Green Valley Modification** was identified as a routing opportunity through the NFS lands to potentially avoid impacts to the community of Green Valley. It is being recommended for elimination for several reasons:

- Increase the significant impacts to biological and water resources;
- Location of the new transmission line significantly outside of a designated Utility Corridor.

However, LADWP modified the proposed alignment through Green Valley to lessen the impacts to the existing residences.

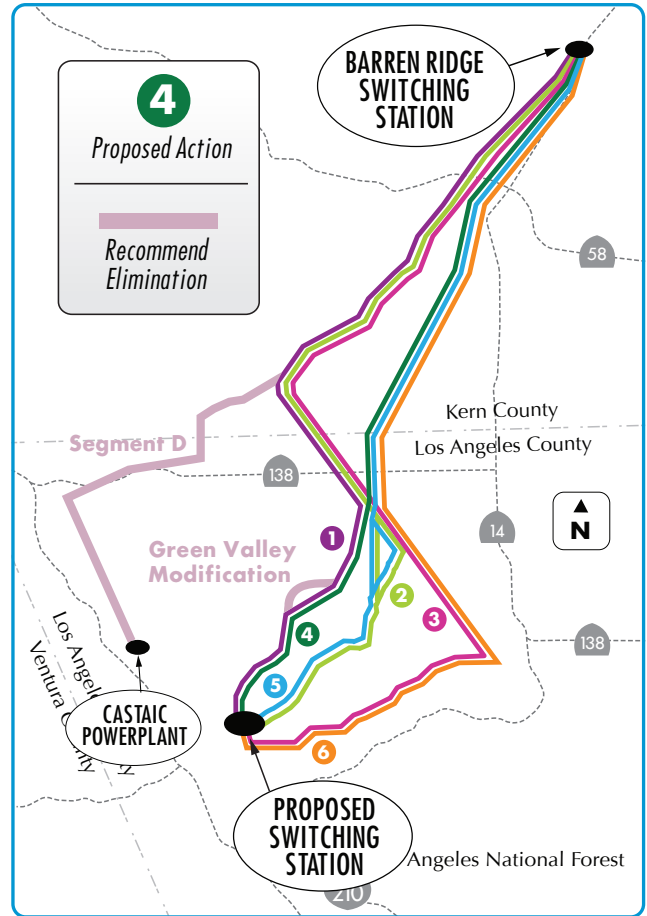
## PROJECT ALTERNATIVES

Six routing alternatives have been identified and are being recommended for study within the EIS/EIR. Alternative 4 is the LADWP Proposed Action and would parallel their existing transmission lines between Barren Ridge Switching Station and the proposed Haskell Switching Station. In addition to the six routing alternatives for the new 230 kV transmission line, each project alternative would include the additional project components described on page one of the Project Description.

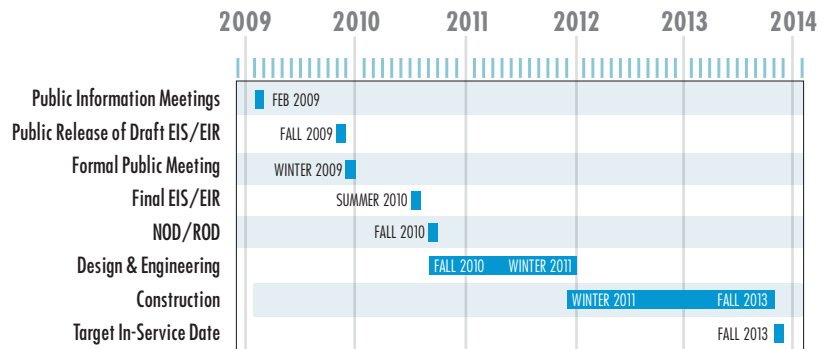
## DRAFT EIS/EIR

The Draft EIS/EIR is expected to be circulated to the public in Fall 2009. The public will have the opportunity to comment on the document during the public review period and at the Formal Public Meetings. All comments will be considered. Responses to public comment will be published within the Final EIS/EIR (anticipated release in Summer 2010).

## Alternative Routes for New 230kV Transmission Line



## Project Timeline



## CONTACT US

Your comments and involvement are welcomed throughout the Project and feedback is appreciated. If you have questions or comments about the BRRTP, want to be added to the BRRPT mailing list, or contact the Project team, please:

- Call the toll free Hotline (877) 440-3592
- Visit the website: [www.ladwp.com/barrenridge](http://www.ladwp.com/barrenridge)
- Email to [BRRTP@powereng.com](mailto:BRRTP@powereng.com)
- Send written comments to:  
BRRTP--Forest Service/BLM/LADWP  
c/o POWER Engineers, Inc.  
731 Ball Road, Suite 100  
Anaheim, CA 92805