



**2025 Urban Water Management Plan (UWMP)
&
2025 Water Shortage Contingency Plan
(WSCP)
Public Meeting**

Presenter Intros



Kharla Pimentel, EIT
**UWMP Development
Team Member**



Ben Wong, PE
**UWMP Development
Team Lead**

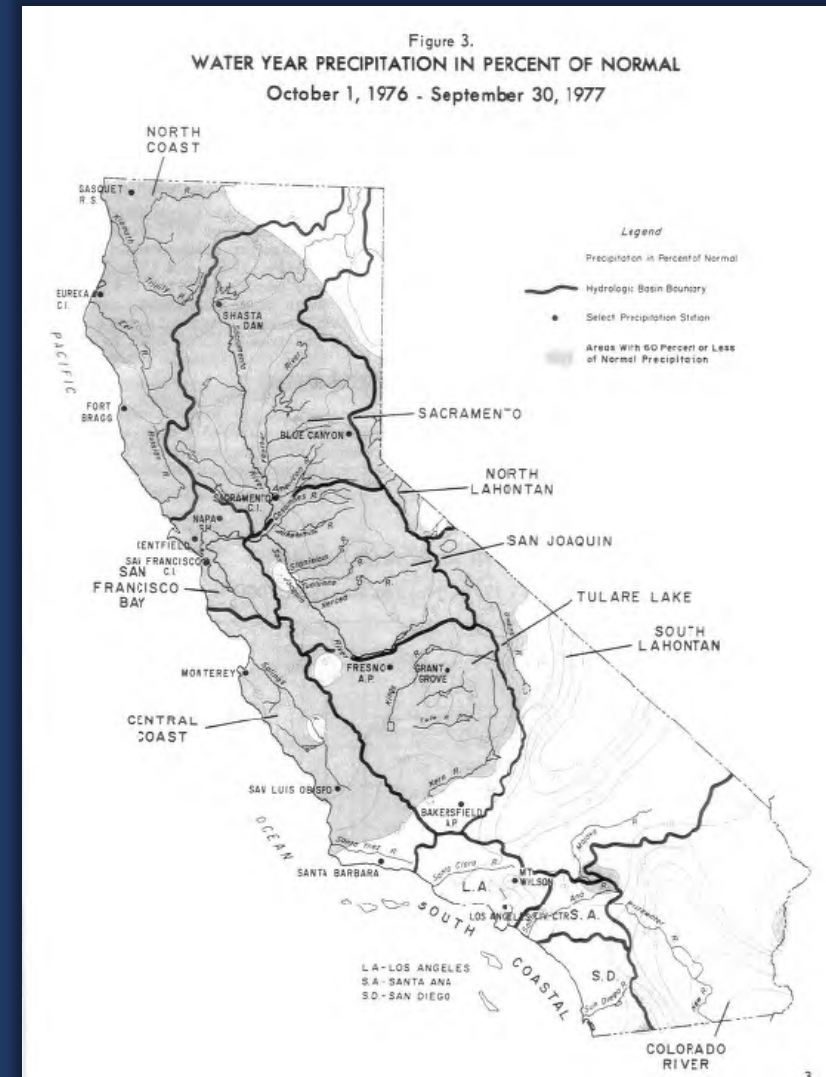
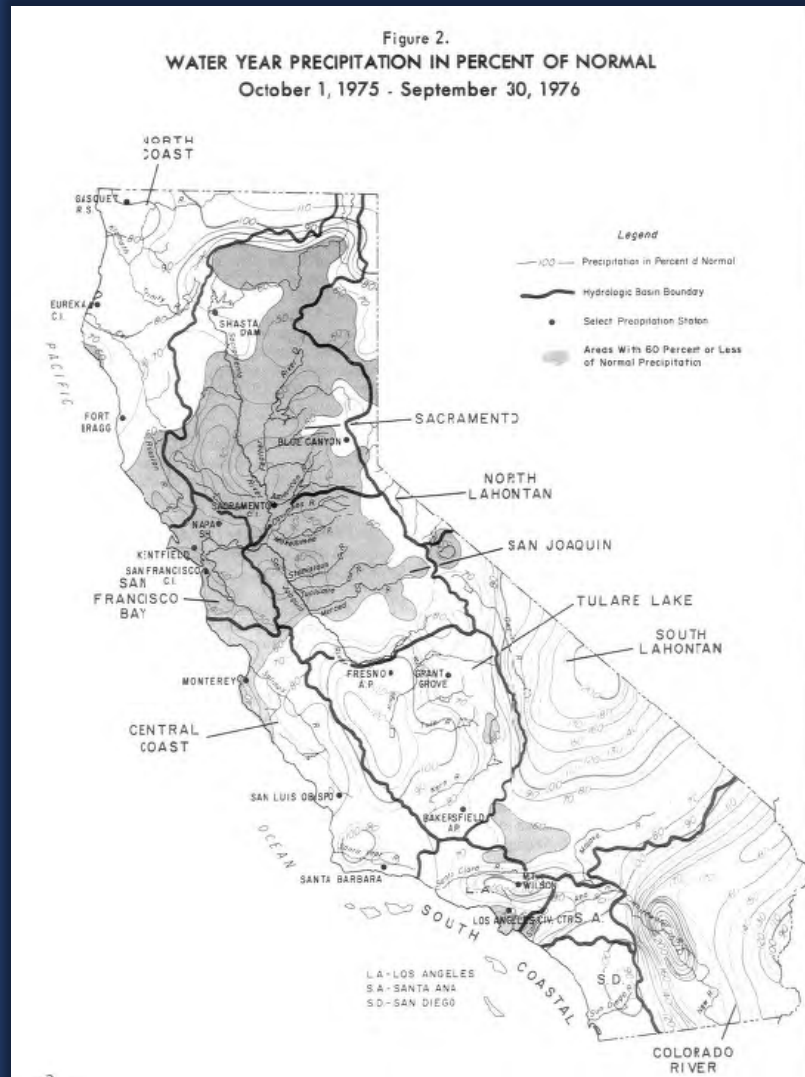


Kristine Ly, EIT
**UWMP Development
Team Member**

Agenda

- What Are the UWMP and WSCP?
- LADWP Water Supply and Demand Today
- Projecting Future Conditions
- Maintaining Water Supply Reliability
 - Water Demand Forecast
 - Water Supply Projects and Programs
- Water Shortage Contingency Plan
- UWMP and WSCP Timeline and Next Steps

1976-1977 Was The Most Severe Drought Period In California History



UWMP Act Passes In 1983, Requiring Water Suppliers to Plan For Droughts And Demonstrate Water Supply Reliability

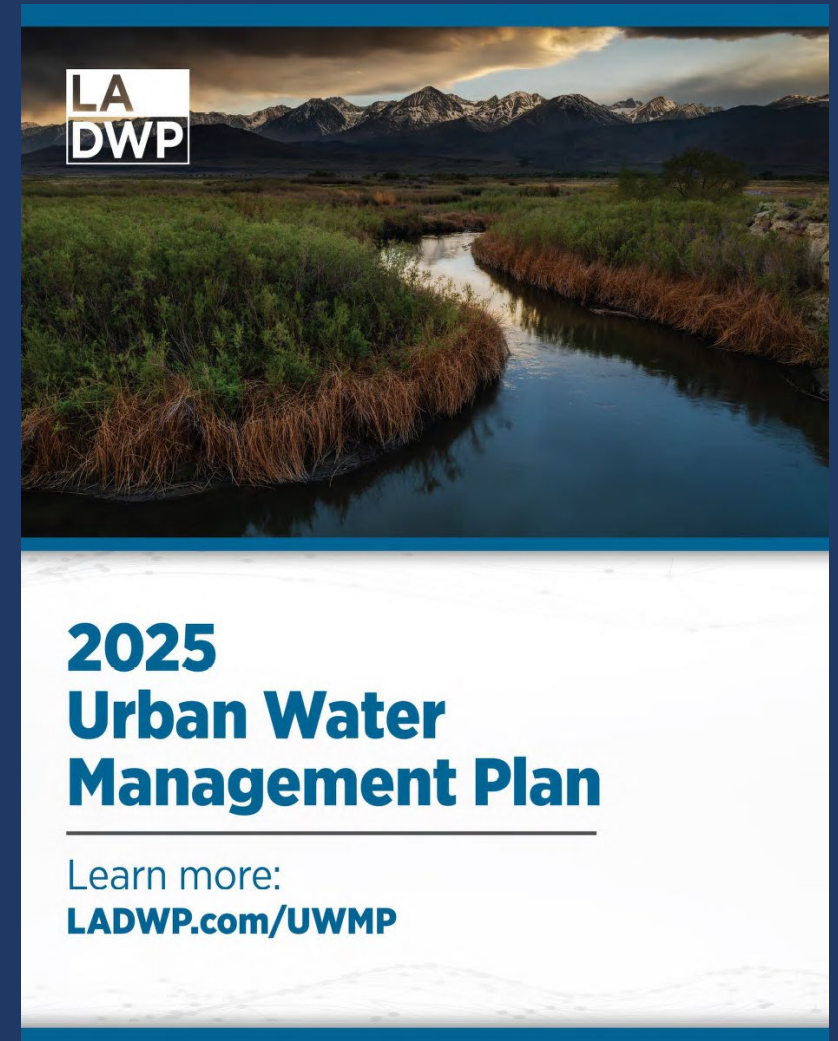
CALIFORNIA URBAN WATER MANAGEMENT PLANNING ACT

Established: AB 797, Klehs, 1983

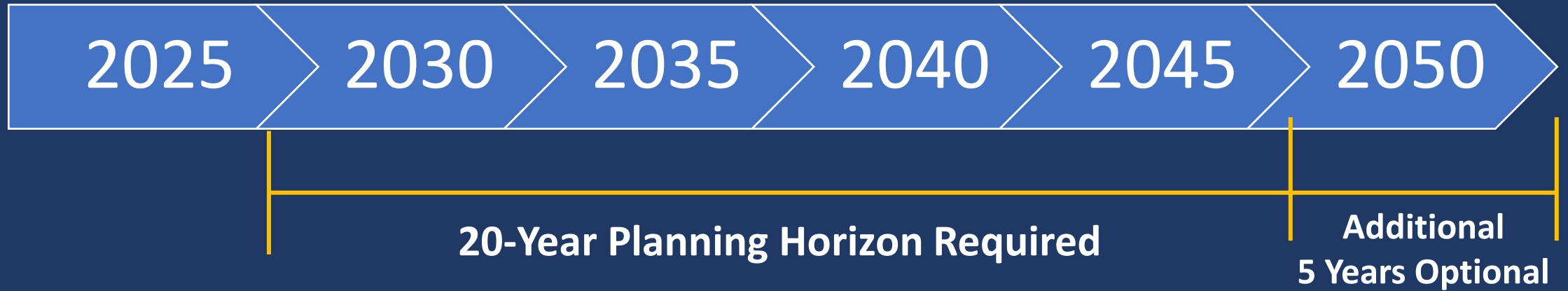
**CALIFORNIA WATER CODE DIVISION 6
PART 2.6. URBAN WATER MANAGEMENT PLANNING**

UWMPs Standardize Water Supply Planning and Reporting Throughout the State

- Requirement for urban water suppliers:
 - Serving over 3,000 customers OR
 - Supplying over 3,000 AFY
- UWMPs are submitted to the California Department of Water Resources (DWR)
- Failure to comply with the UWMP Act results in ineligibility for state water loans and grants



UWMP Forecasts Reliability In 5-Year Increments Over the Next 25 Years



Water Supply Reliability Is Assessed Under Four Scenarios

**Long-Term Assessments:
2026-2050 (25 years)
in 5-year increments**

Average Year
Hydrology

Single-Dry Year
Hydrology

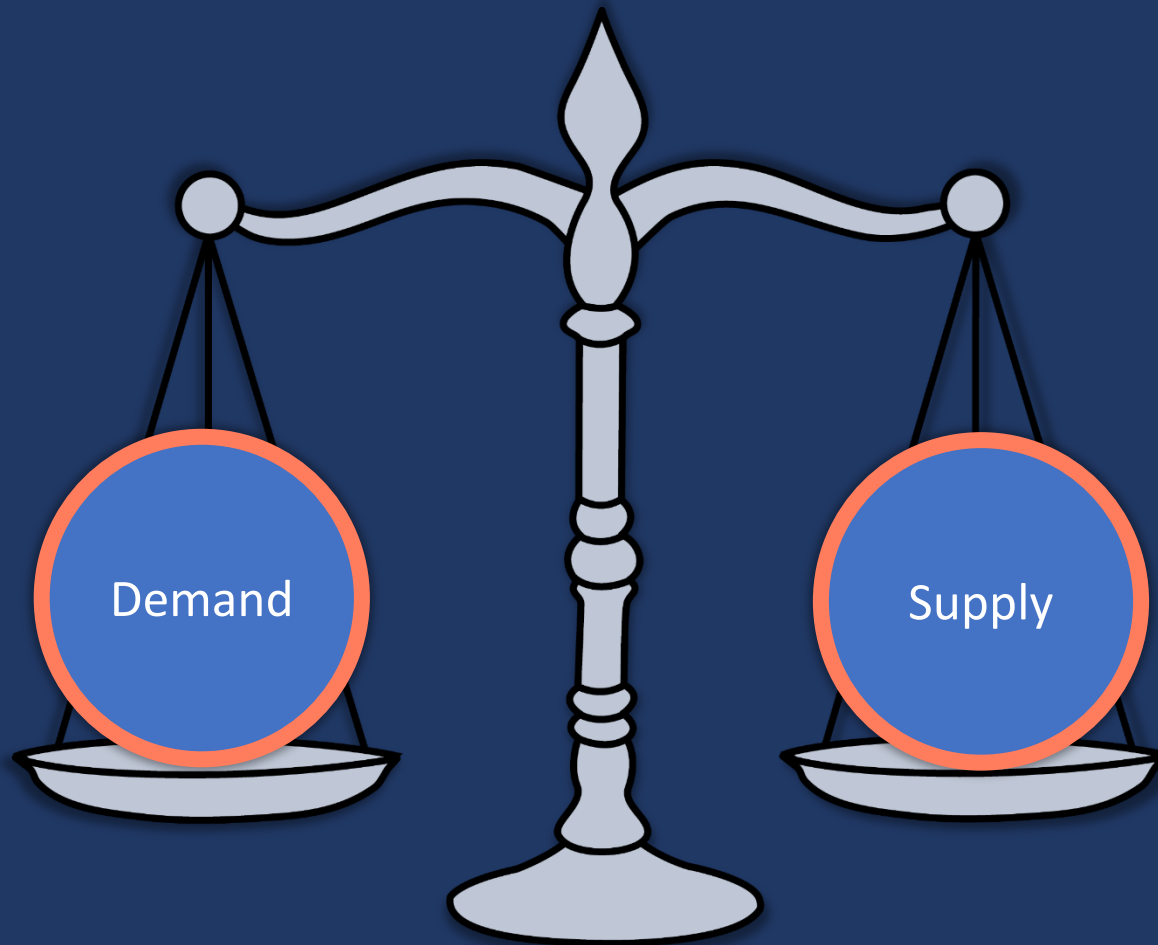
Multi-Dry Year
(5-year period)
Hydrology

**Near-Term Assessment:
2026-2030 (5 years)
in 1-year increments**

Drought Risk
Assessment

Water Supply Reliability Is The Balance of Projected Demands and Available Supplies Over Time

- Growth
- Economy
- Conservation
- Climate



- Existing Supplies
- Future Conditions
- New Supplies

WSCP Outlines Process to Identify and Respond to Shortages

2022 Drought Response:

Know Your Watering Days

Addresses End in	SUN	MON	TUE	WED	THU	FRI	SAT
ODD		💧		✖		💧	
EVEN	💧		✖		💧		

Current Watering Days:

Know Your Watering Days

Addresses End in	SUN	MON	TUE	WED	THU	FRI	SAT
ODD		💧		💧		💧	
EVEN	💧		💧		💧		

LA DWP

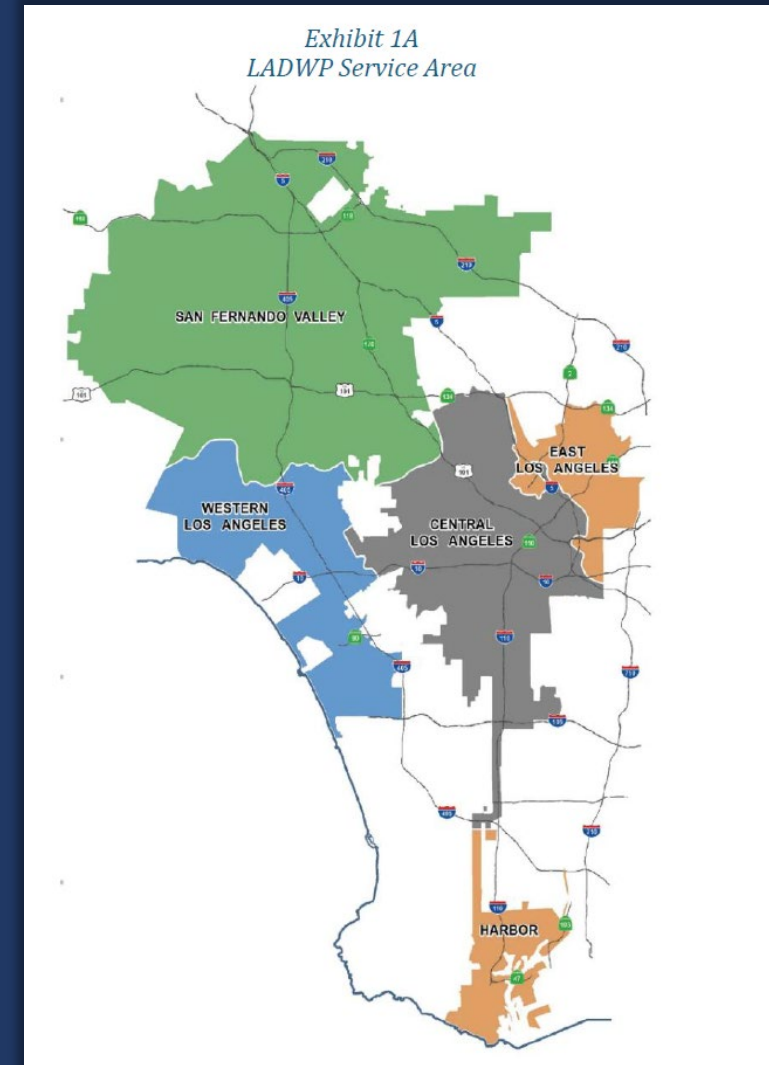
2025 Water Shortage Contingency Plan

Learn more:
[LADWP.com/UWMP](https://ladwp.com/UWMP)

February 2026 Draft

LADWP Water System Service Area

- 473 sq. mi. Service Area
- Approximately 4 million customers
- Serve drinking water and non-potable recycled water
- LADWP supplies approximately:
 - 430 million gallons per day (MGD)
 - 480,000 acre-feet per year (AFY)

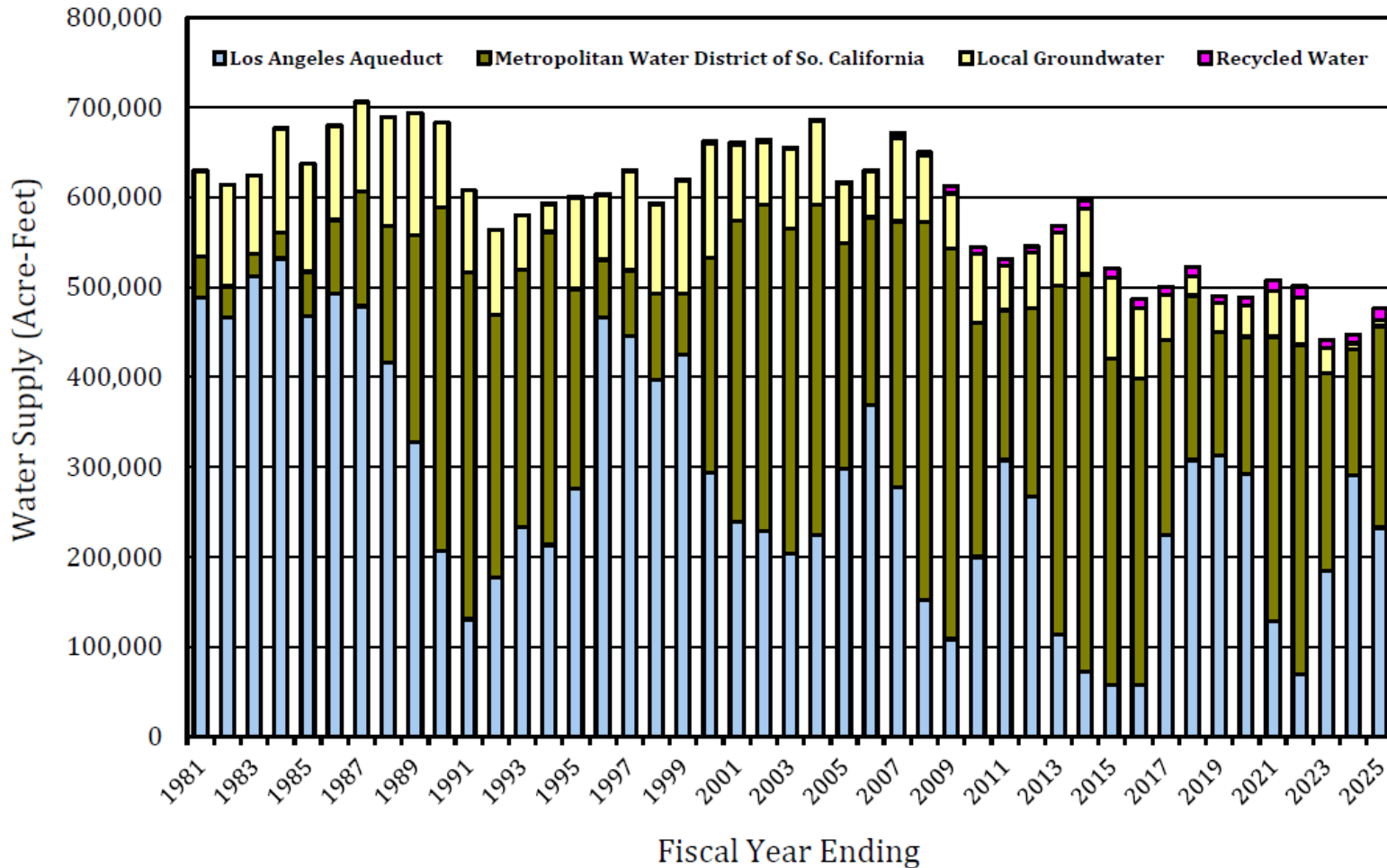


Los Angeles Water Supply Portfolio Consists of Imported, Local, and Supplemental Supplies

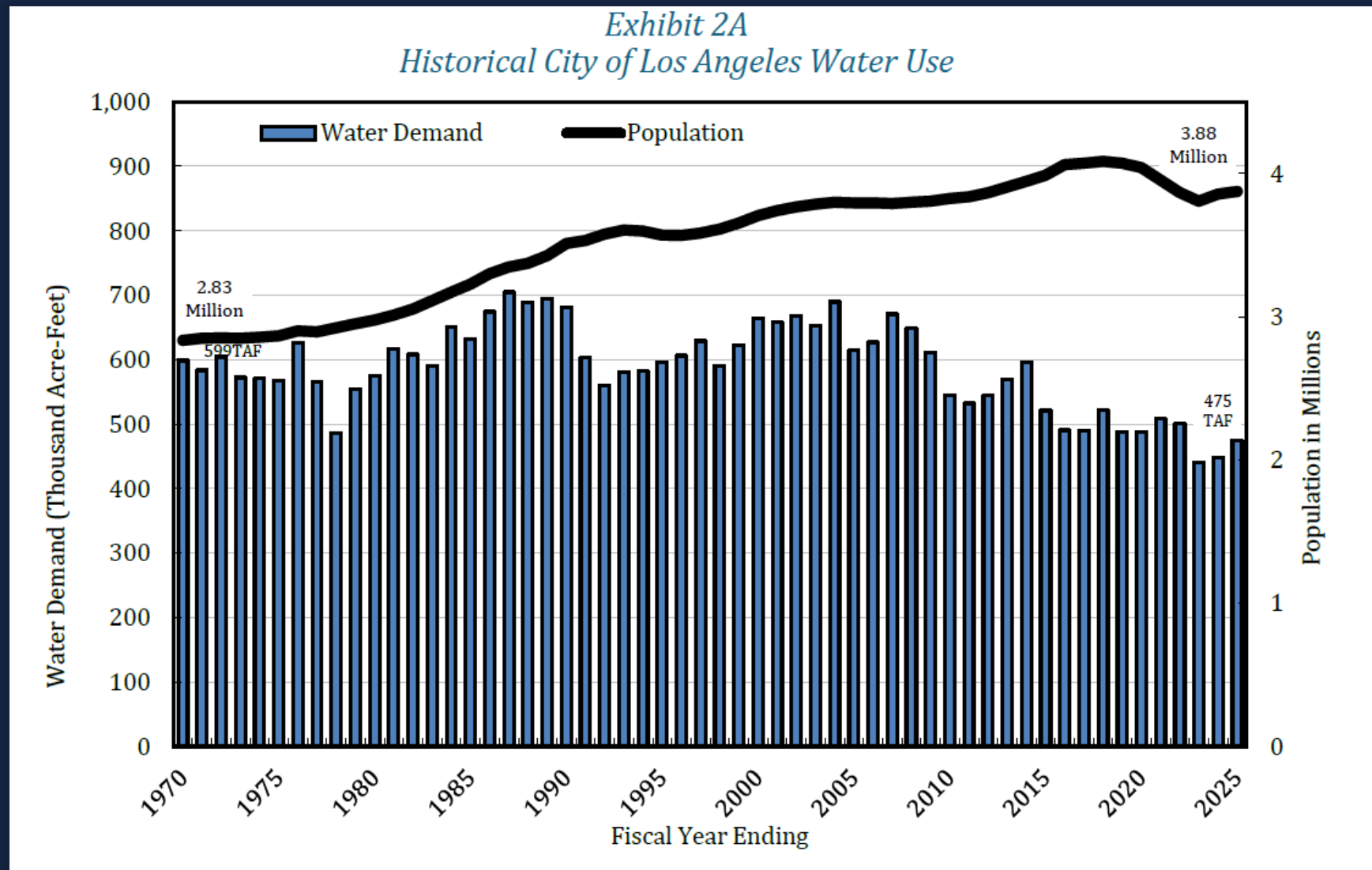


LADWP Supply Mix Has Evolved Over the Last 30+ Years

Exhibit 1G
LADWP Historical Water Supply Sources FY 1980/81 to 2024/25



We Use Less Water Today Than We Did Over 50 Years Ago Despite Growing By One Million People



Multiple Ongoing Efforts to Promoting Conservation as a Way of Life

My Water Insights

MY WATER INSIGHTS
 YOUR HOME WATER REPORT
 THIS IS AN INFORMATIONAL REPORT AND NOT A BILL.
 SERVICE ADDRESS: ACCOUNT NUMBER:
 DO NOT REMOVE. SEE ALL INFORMATION AT: mywaterinsights.ladwp.com

Your WaterScore
 Made in the Sun 10,000
 Way to go, WaterSaver!
 You ranked in the top 20%.

Gallons Per Day (GPD)
 You: 49 gpd
 Efficient Households: 112 gpd
 Average Households: 163 gpd

Your personalized plan
 Save money and protect your home with the following actions:
 Upgrade clothes washer: \$65 rebate
 Toilet before you flush: \$38 rebate
 Install high-efficiency showerheads: \$45 rebate

Increased Rebate Incentives

\$5/sq. ft. Rebate
 Replace your lawn with sustainable landscaping
 ladwp.com/save

\$500 Rebate
 High-efficiency clothes washer
 ladwp.com/save

\$250 Rebate
 Water-efficient toilet
 ladwp.com/save

Landscape Efficiency Assistance Program (LEAP)



Flume Program

flume

Technical Assistance Program

Technical Assistance Program
 up to **\$2 million**
 in financial incentives
 ladwp.com/save

LADWP.com/wc



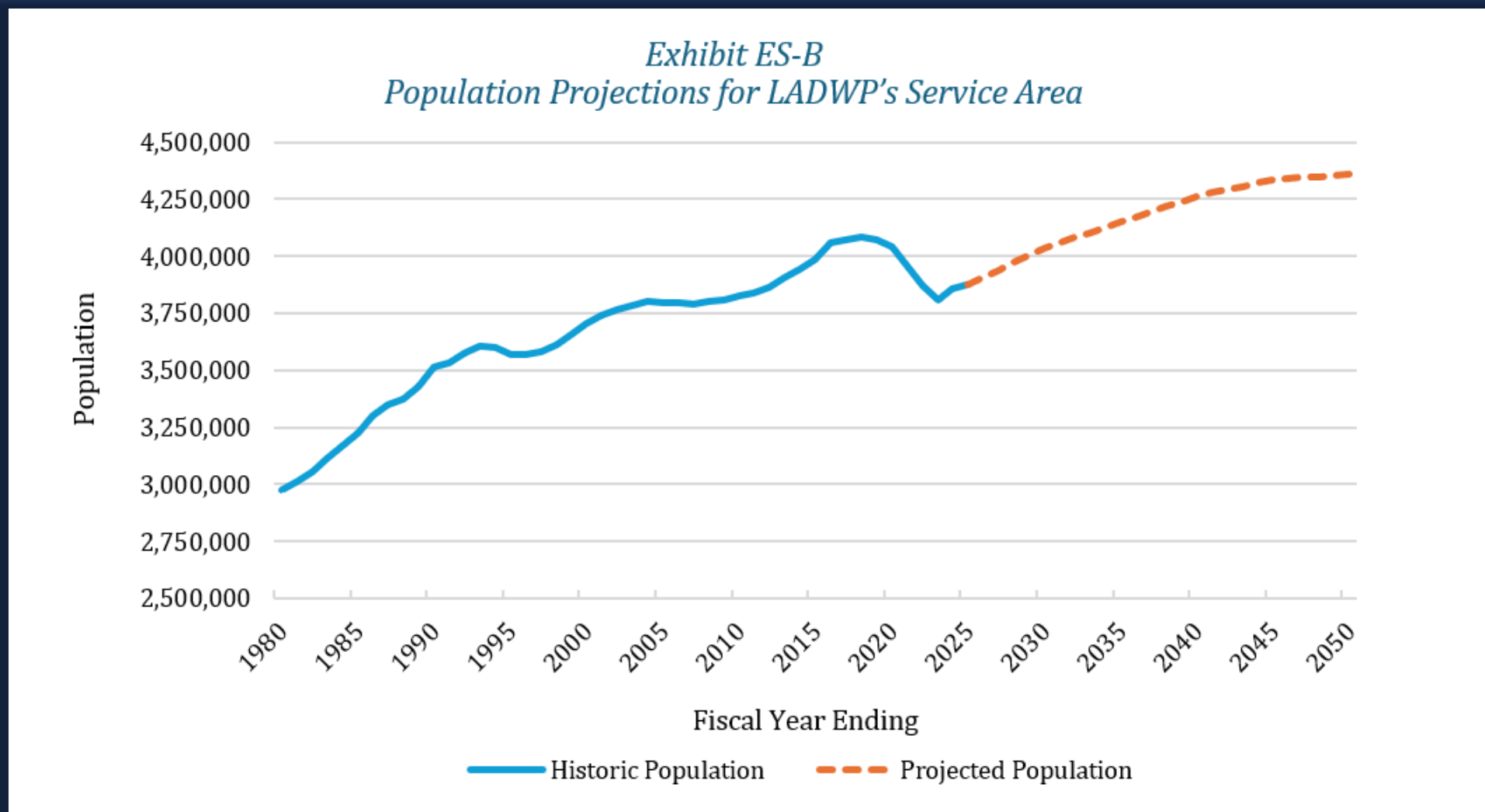
UWMP Forecasting is Generally Conservative, Significant Conservation Savings Achieved Due to Ongoing Efforts

*Exhibit 9A
Historic LADWP Reliability and Past UWMP Demand Forecasts*

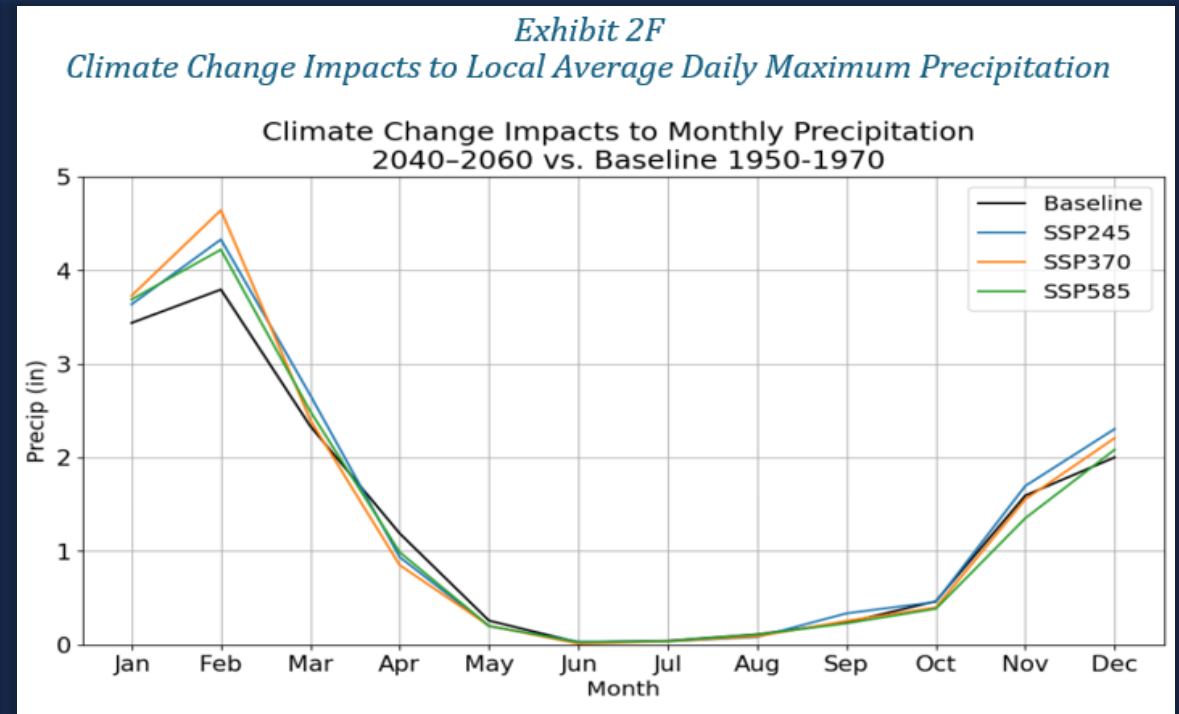
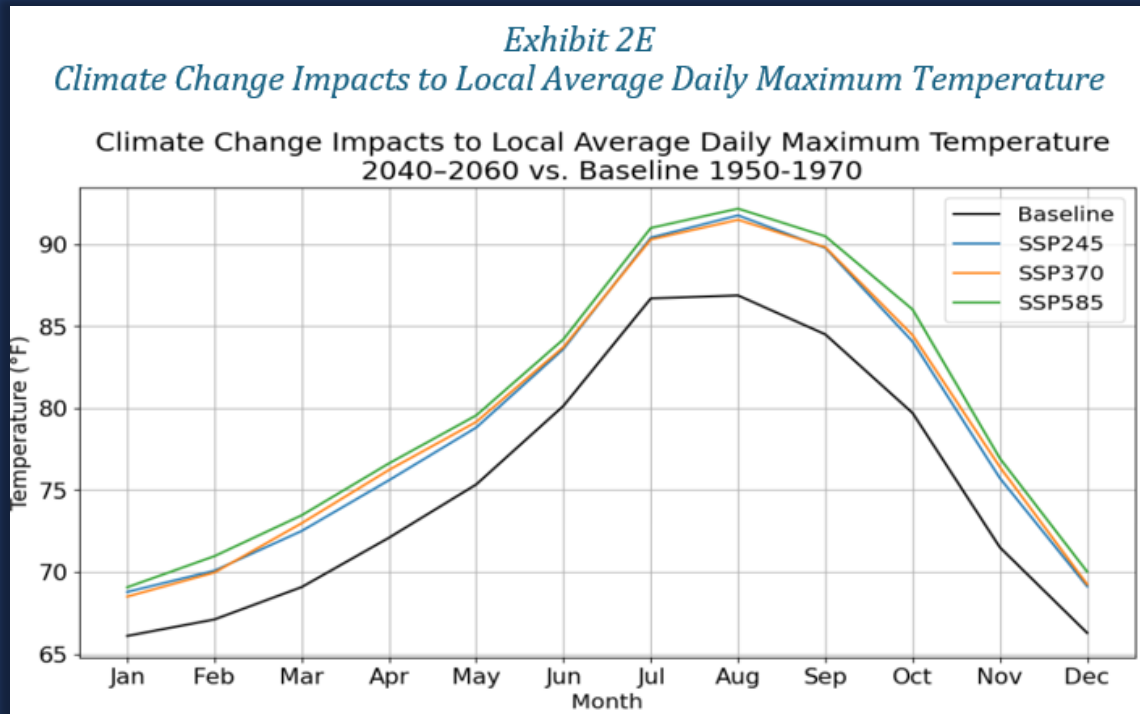
Demand and Supply Projections (in acre-feet)	Historic Actuals			
	Fiscal Year Ending June 30			
	2000	2010	2020	2025
<i>Prior UWMP Demand Forecasts</i>	673,000	725,000	731,000	755,000
Water Demand	661,700	544,200	487,600	475,000
Supplies				
Los Angeles Aqueduct	293,200	199,700	292,100	232,200
Groundwater	126,600	77,000	34,400	6,100
Recycled Water – Non-potable Use	1,200	6,700	9,600	13,200
Metropolitan Water District	<u>240,000</u>	<u>260,800</u>	<u>152,600</u>	<u>224,400</u>
Total Supplies	661,700	544,200	488,700	475,900

1. 1995 UWMP forecast shown for 2000 and 2010 and 2005 UWMP forecast shown for 2020 and 2025
2. Includes demand to and (from) storage

UWMP Relies on Forecasts from the Southern California Association of Governments, Population Projected to Grow Through 2050



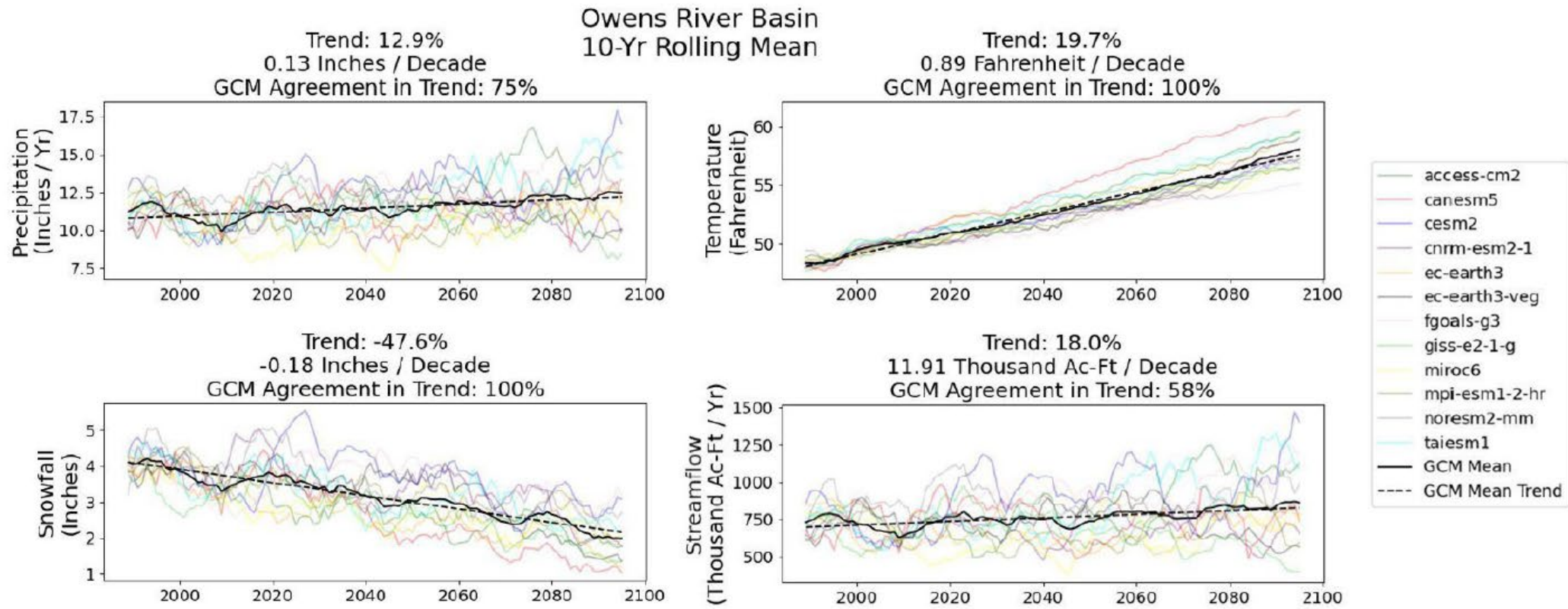
Climate Change Study in Partnership with UCLA Suggest Higher Temperature and Precipitation in Los Angeles Area Through 2050



And...

... Higher Temperature and Precipitation in Eastern Sierras Through 2100, Intensified Hydrologic Extremes, and Decreased Snowpack

Exhibit 4L
Summary of 2023 Climate Study Findings



LADWP Water Reliability Strategy Consists of Three Key Elements

- 1. Maintain Access to Imported Supplies**
- 2. Diversify Water Supply Portfolio**
- 3. Improve Water Use Efficiency**





LADWP Reliability Analysis Tables Show Projected Supplies and Demands Through 2050

*Exhibit 9B
Service Area Reliability Assessment for Average Year*

Demand and Supply Projections (in acre-feet)	FY 24/25 Actuals	Average Year (30-year median hydrology) Fiscal Year Ending June 30				
		2030	2035	2040	2045	2050
Water Demand	475,900*	472,300	457,200	462,900	467,000	467,700
Supplies						
Los Angeles Aqueduct	232,200	193,400	193,400	193,400	193,400	193,400
Groundwater	6,100	103,800	109,300	109,300	109,300	109,300
Recycled Water – LA GWR	-	22,000	40,000	40,000	40,000	40,000
Recycled Water – Non-potable Use	13,200	19,200	19,300	19,400	19,600	19,700
Metropolitan Water District	<u>224,400</u>	<u>133,900</u>	<u>95,200</u>	<u>100,800</u>	<u>104,700</u>	<u>105,300</u>
Total Supplies	475,900	472,300	457,200	462,900	467,000	467,700

*Includes demand to and (from) storage
Note: Values rounded to nearest 100 AF

LADWP Maintains Water Supply Reliability Under all Hydrological Scenarios and Drought Risk Assessment

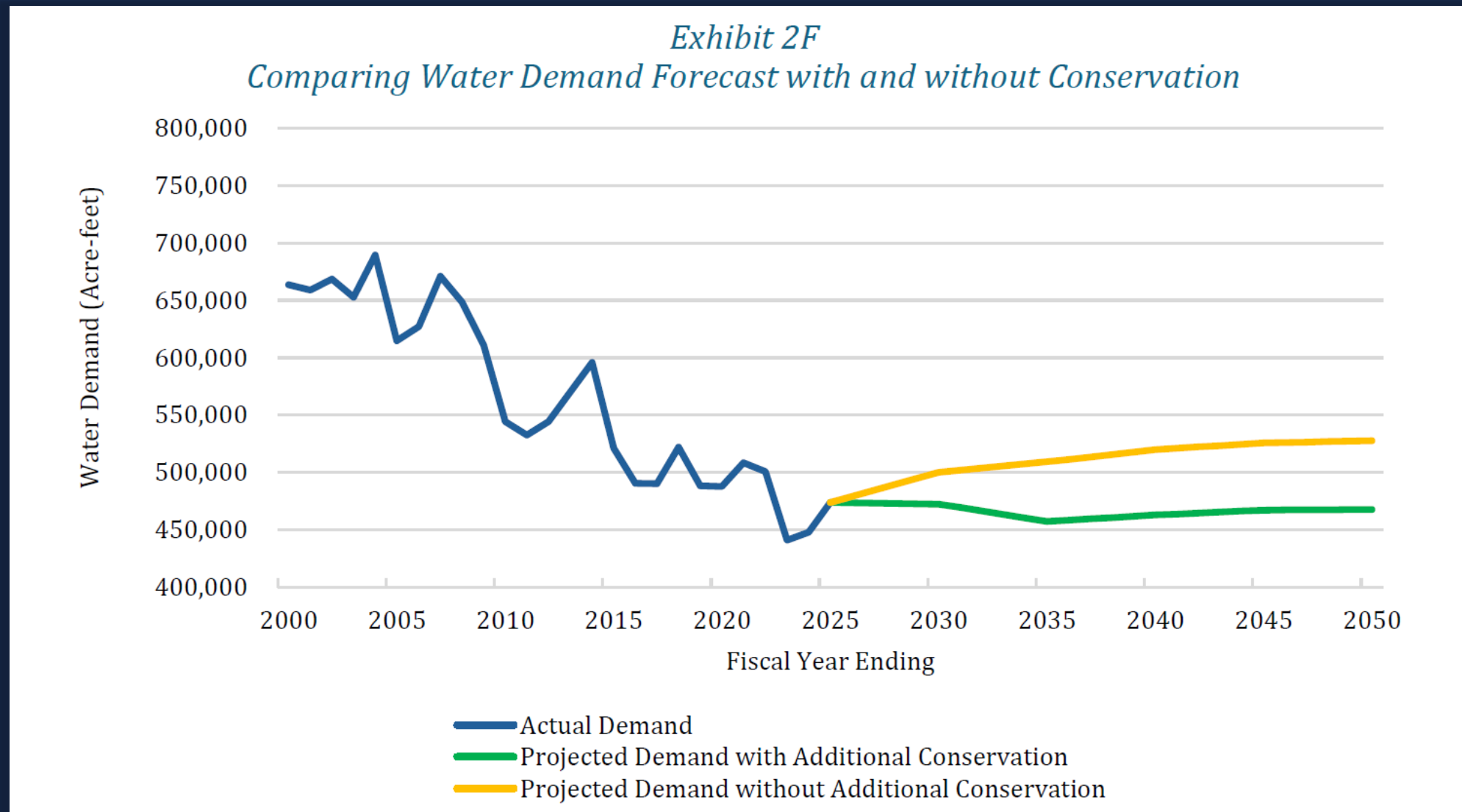
Scenario	Sufficient Supplies to Meet Projected Demands
Average Year (2026-2050)	
Single-Dry Year (2026-2050)	
Multiple-Dry Years (2026-2050)	
Drought Risk Assessment (2026-2030)	

UWMP Demand Forecast Model Considers Multiple Drivers to Forecast Demand By Sector

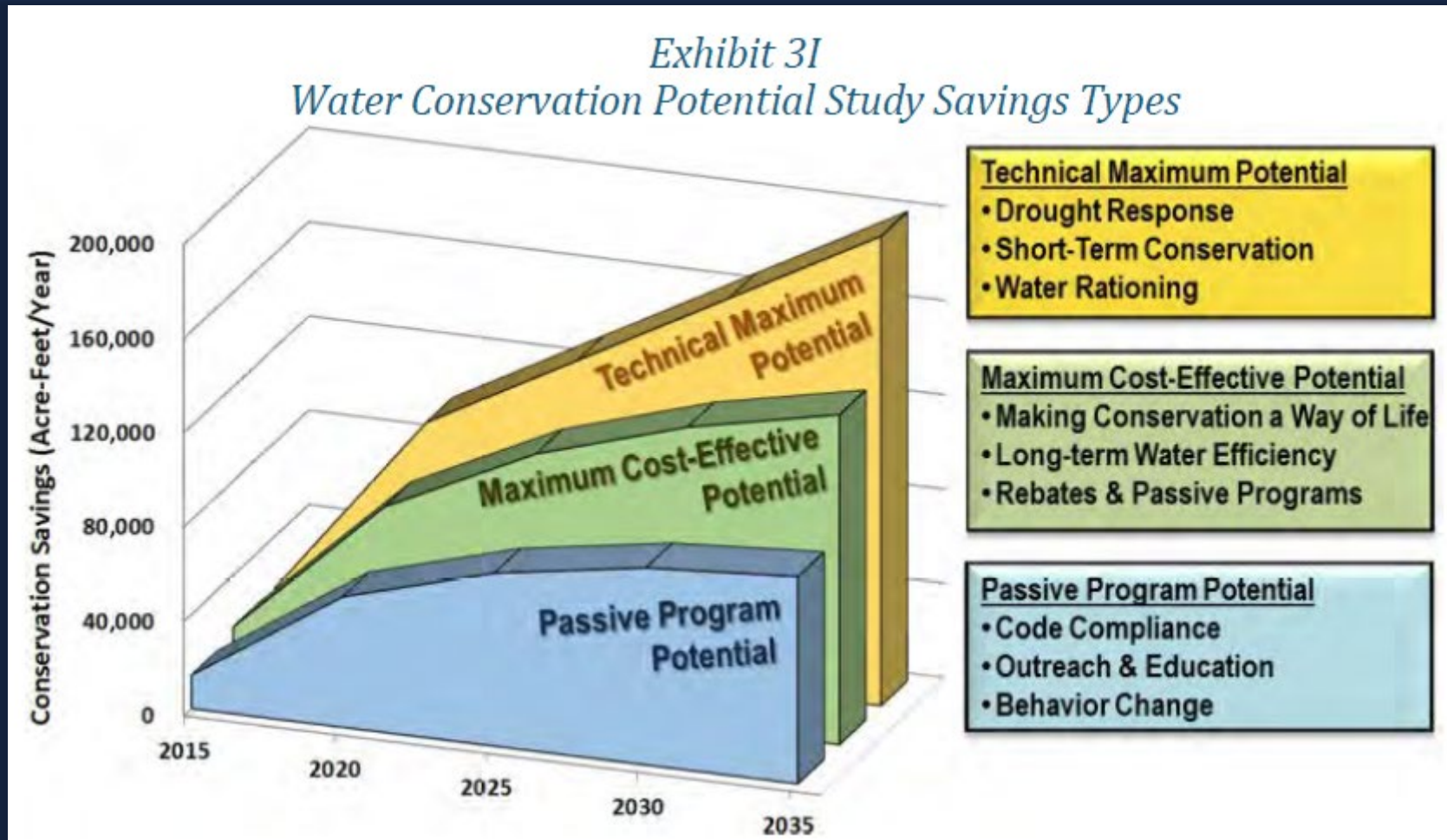
*Exhibit 2D
LADWP Water Demand Model Drivers*

Sector	Demand Drivers
Single-Family Residential	<ul style="list-style-type: none"> Maximum Temperature Precipitation Household Size Occupied Housing Units Lot size Work From Home Percentage Drought Event Responses
Multifamily Residential	<ul style="list-style-type: none"> Maximum Temperature Precipitation Household Size Occupied Housing Units Work From Home Percentage Drought Event Responses
Commercial/Governmental	<ul style="list-style-type: none"> Maximum Temperature Precipitation Commercial and Governmental Employment Commercial, Industrial, and Governmental Water Rate Work From Home Percentage Drought Event Responses
Industrial	<ul style="list-style-type: none"> Maximum Temperature Precipitation Commercial, Industrial, and Governmental Water Rate Work From Home Percentage Drought Event Responses

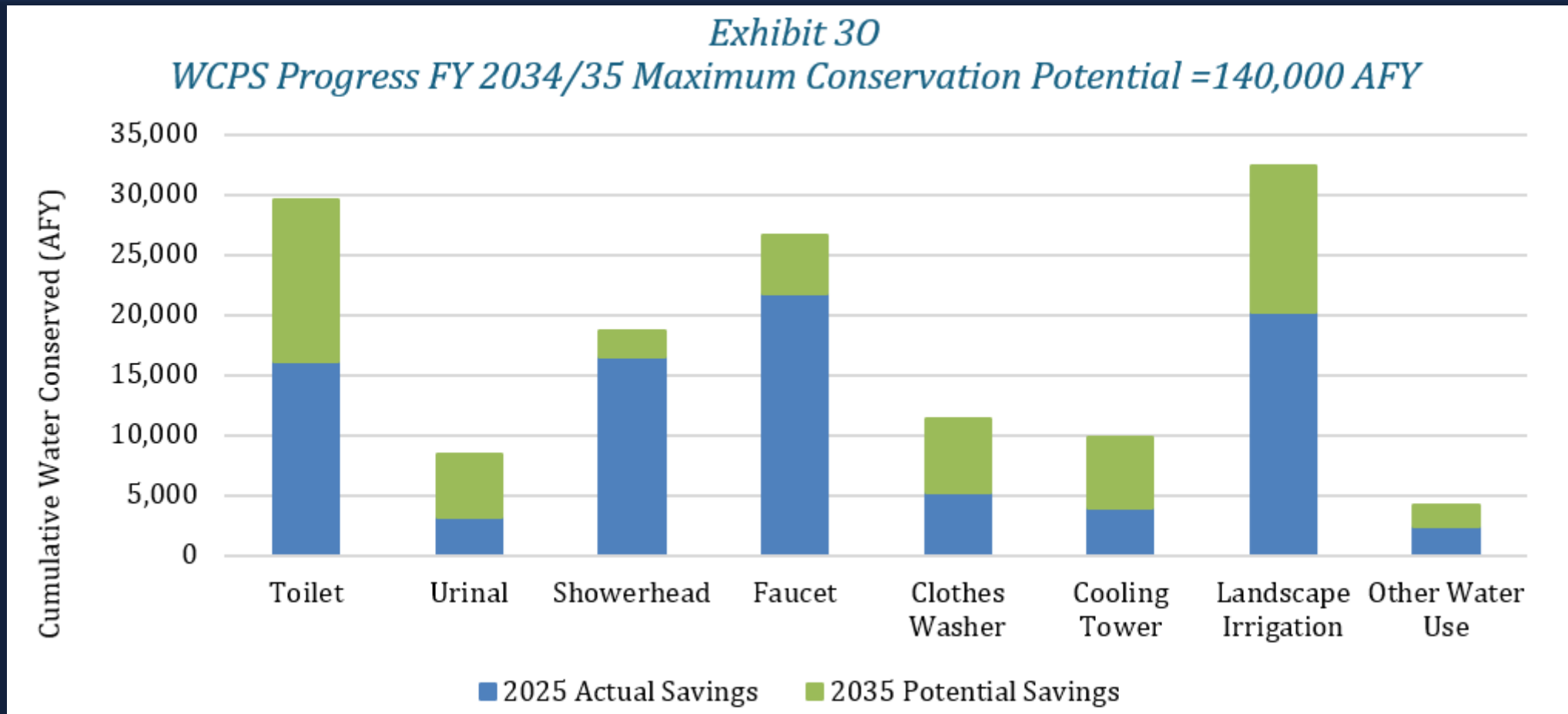
Slight Increase In Demand Forecasted Through 2050 Before Accounting For Additional Conservation



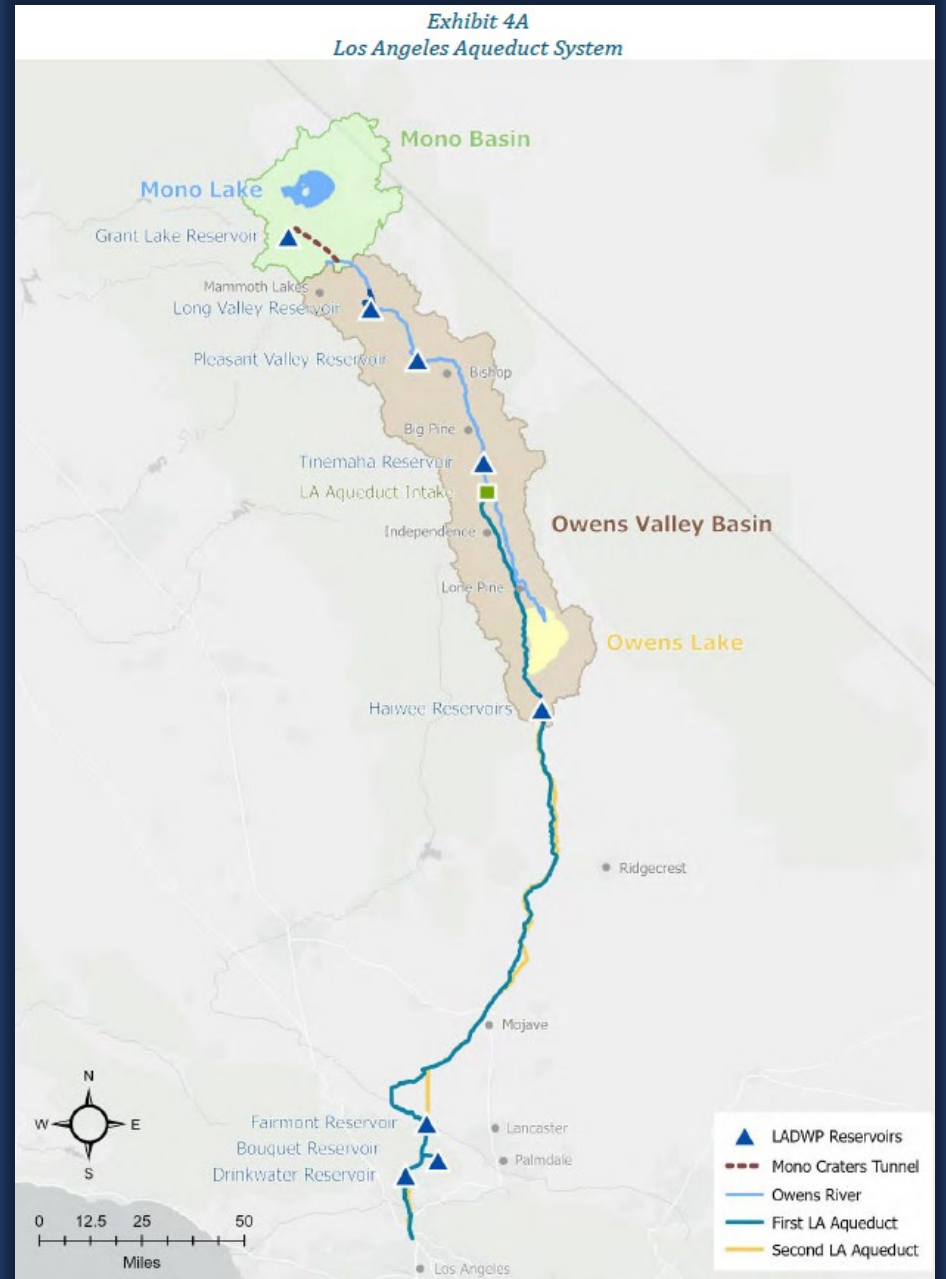
2017 Water Conservation Potential Study Informs Additional Planned Conservation



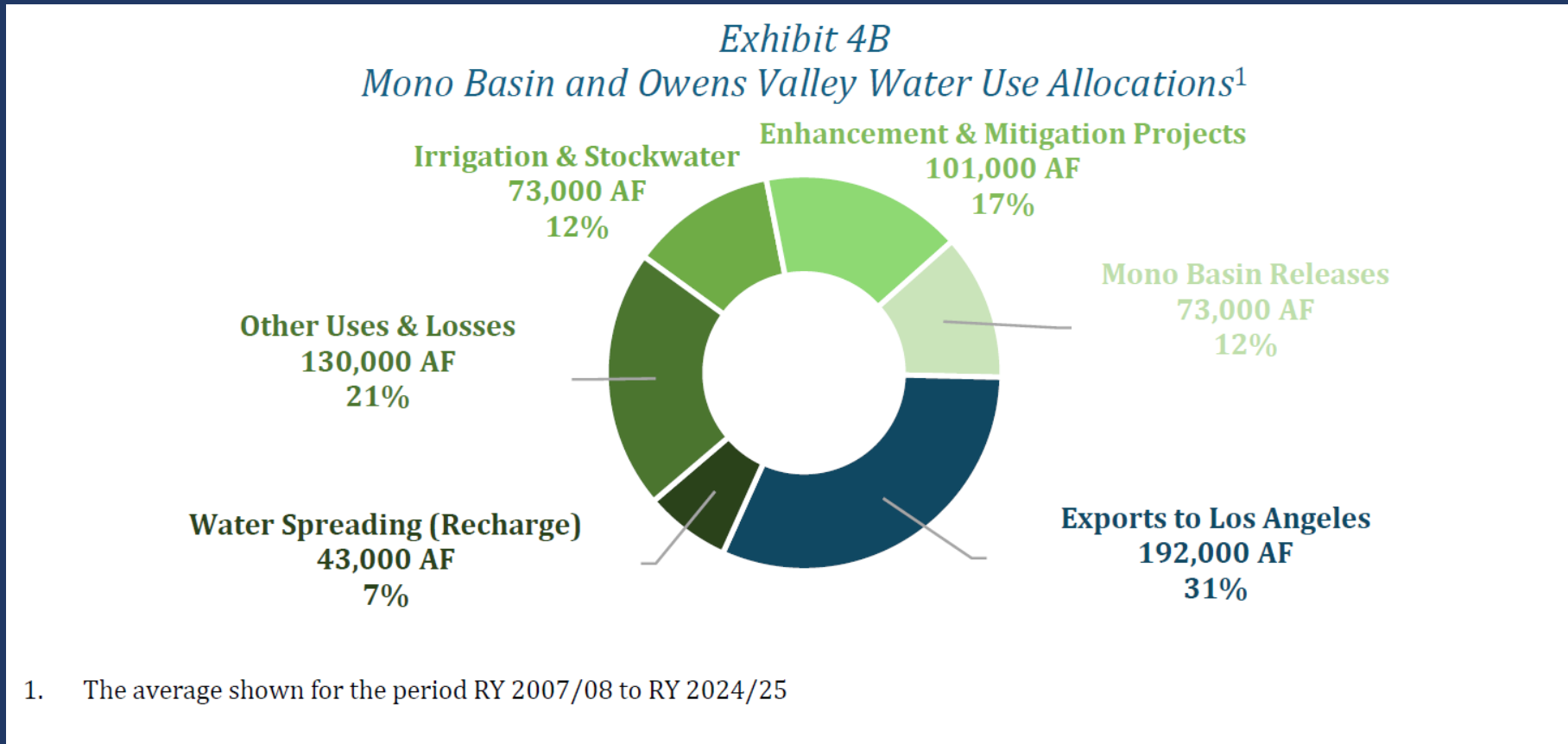
~60,000 AFY of Additional Savings Projected Under Maximum Cost-Effective Potential Through 2050



LAA Supplies Have Been Foundational to the City's Supply Reliability Since Its Completion In 1913

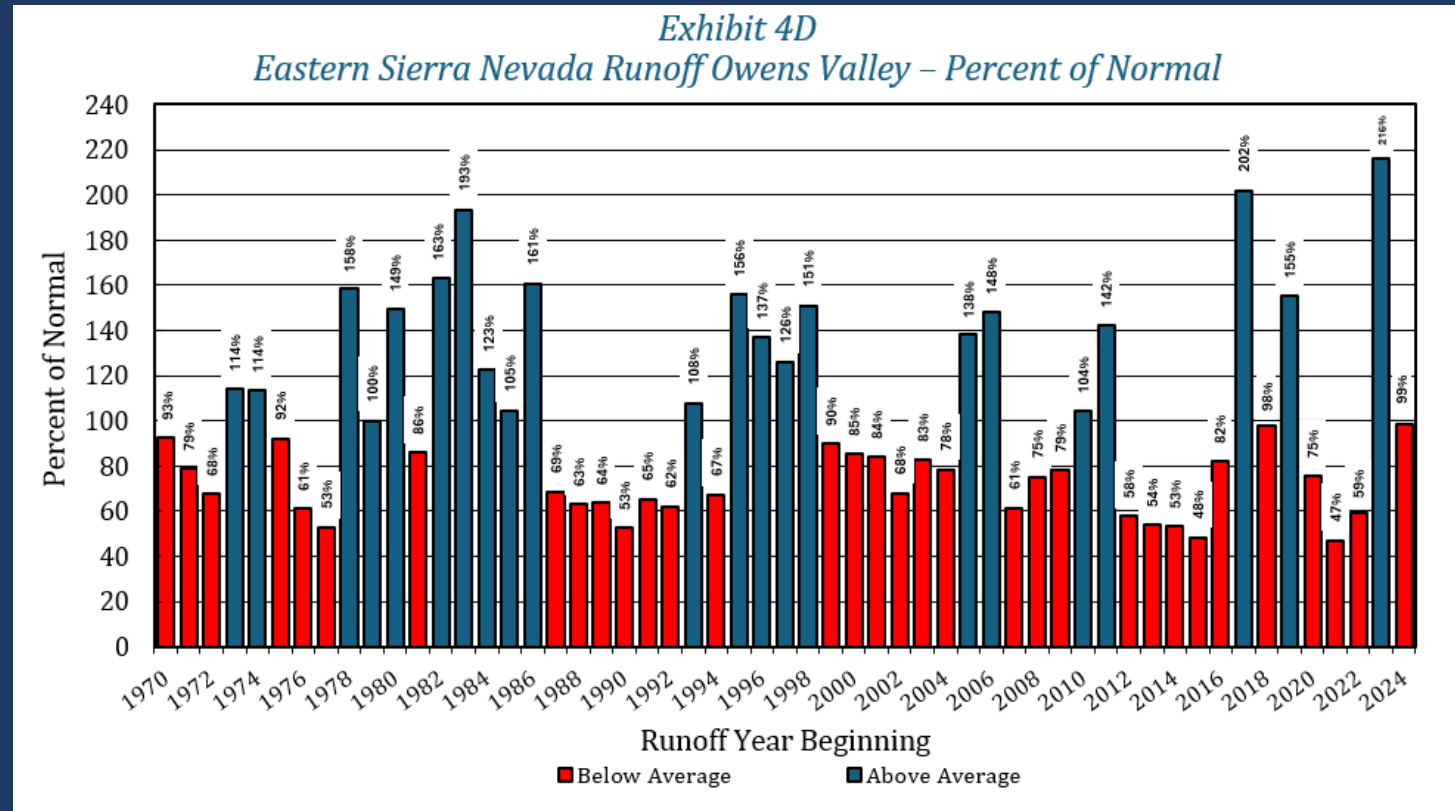


~70 Percent of Eastern Sierra Runoff Is Allocated to Uses Within the Eastern Sierra

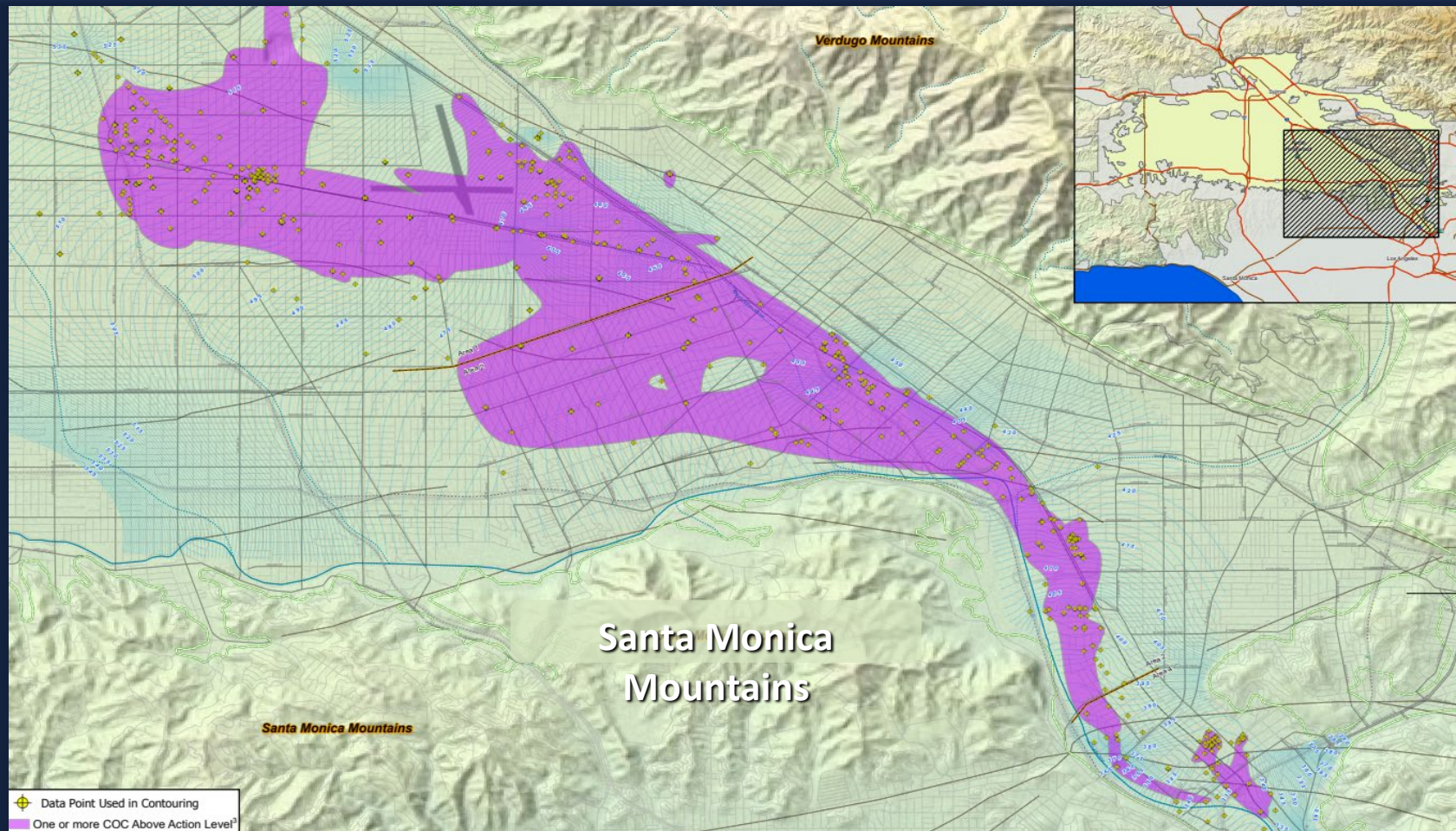


Eastern Sierra Runoff Wet-Dry Cycles Are Variable, Historic Hydrologic Sequences Used to Define Reliability Scenarios

- **Average Year**
(30-year median from FY 90/91 to FY 19/20)
- **Single Dry Year**
(FY 21/22)
- **Multiple Dry Year**
(FY 11/12 to FY 15/16)



Contamination Present In the San Fernando Groundwater Basin From Industrial Processes In the 1940's



Groundwater Remediation Facility Construction Complete, Commissioning Ongoing, Expected to Be In Service In 2026



North Hollywood West Wellhead Treatment



North Hollywood Centralized Treatment



Tujunga Centralized Treatment

Urbanization Resulted In Increased Hardscape and Reduced Natural Infiltration

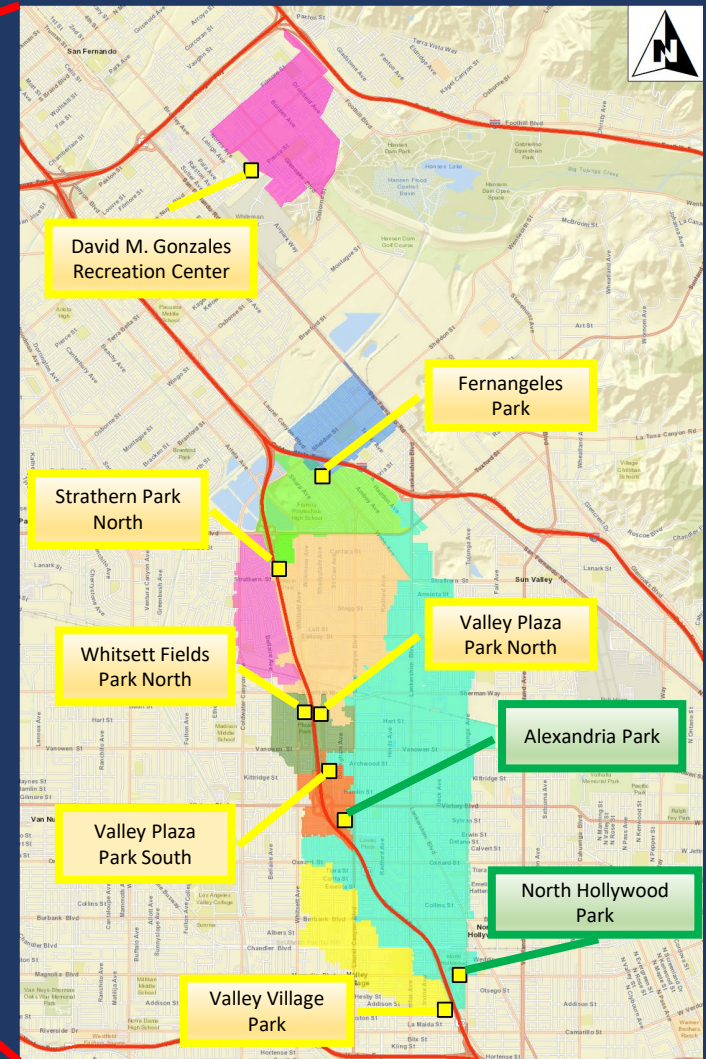
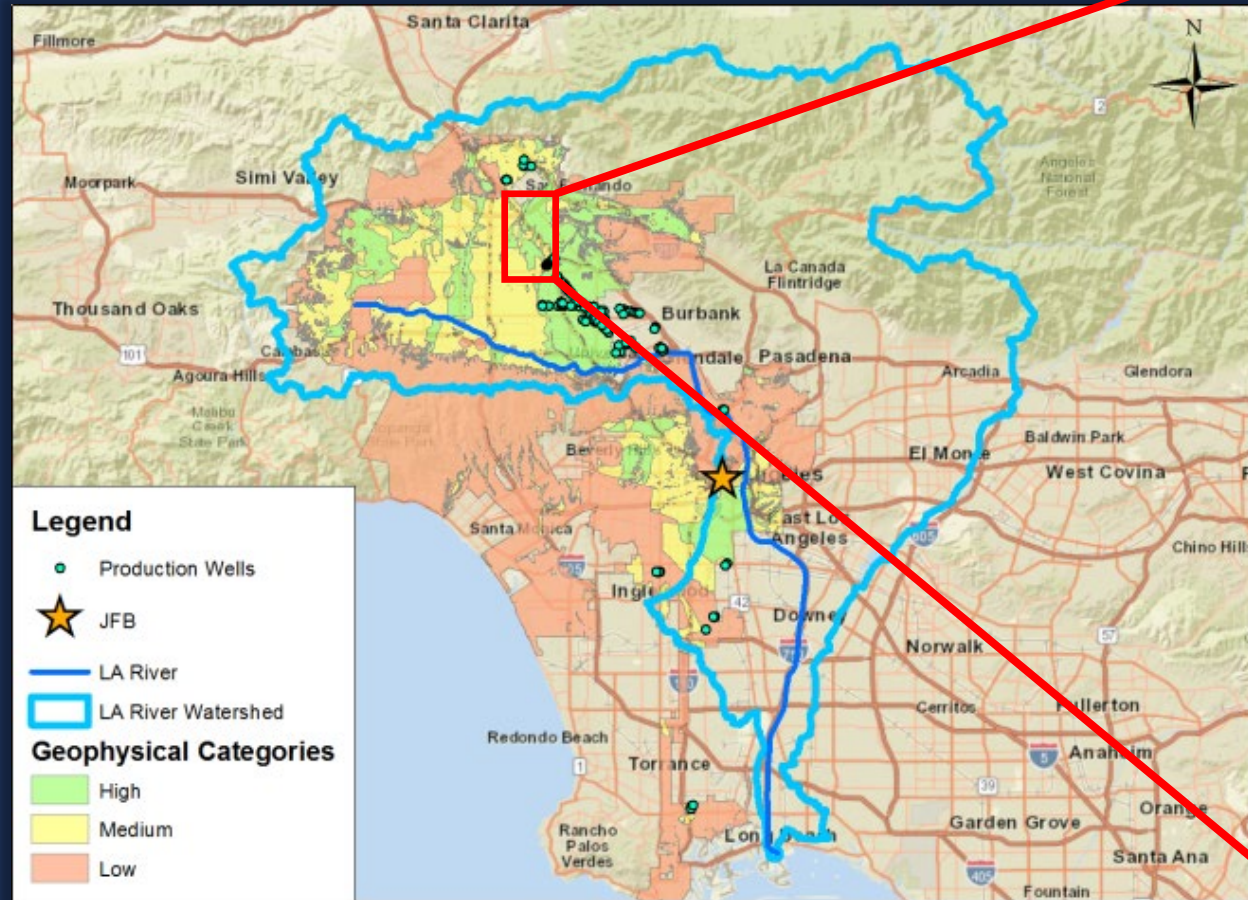


1949



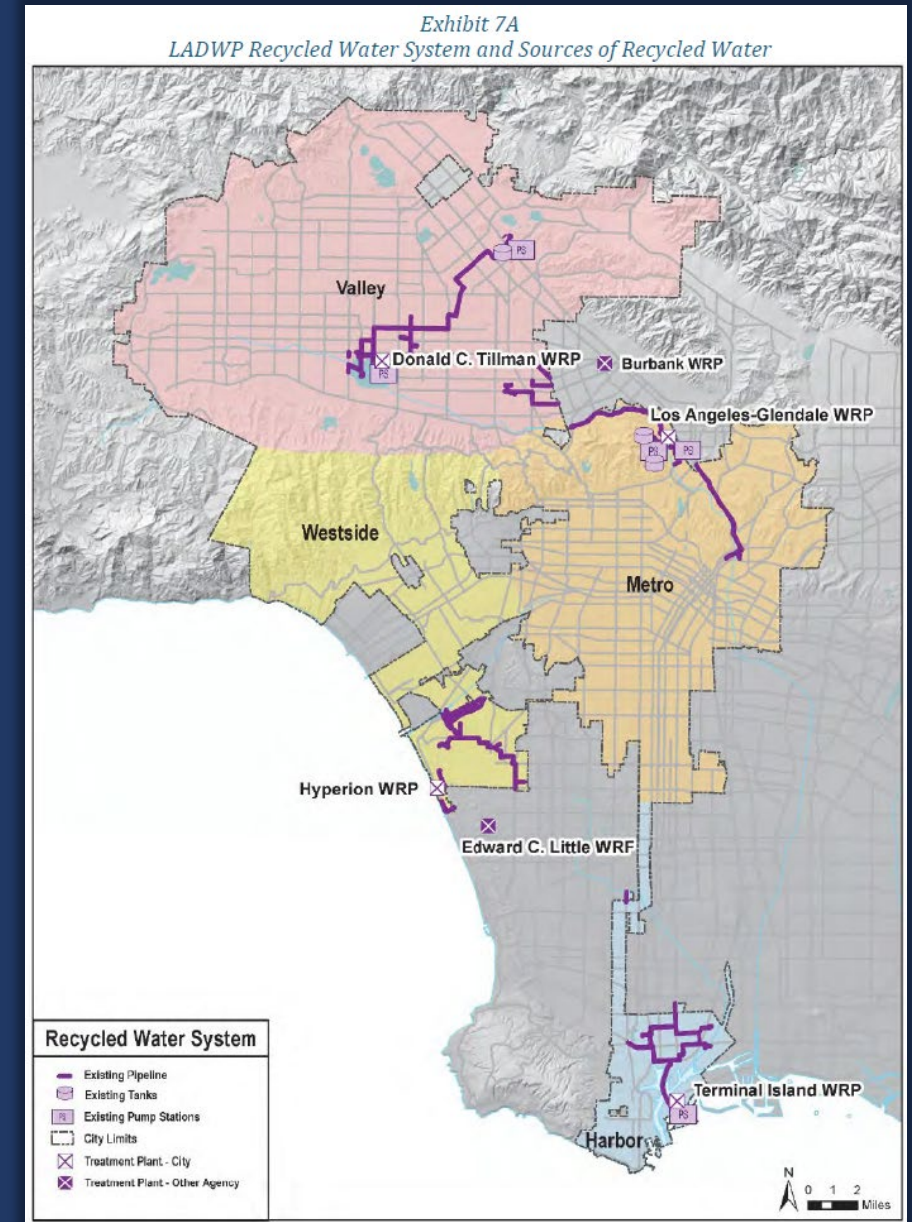
2025

Stormwater Capture Parks Program Utilizing City Parks to Support Groundwater Recharge



Recycled Water Sourced From Six Water Reclamation Facilities

- City Facilities
 - Donald C. Tillman
 - Los Angeles-Glendale
 - Terminal Island
 - Hyperion
- Facilities Outside the City
 - Edward C. Little (West Basin MWD)
 - Burbank (City of Burbank)



Recycled Water Strategy Has Evolved Over the Last Several Decades



Non-Potable Reuse

- Offset Irrigation and Industrial Non-potable Demands



Indirect Potable Reuse

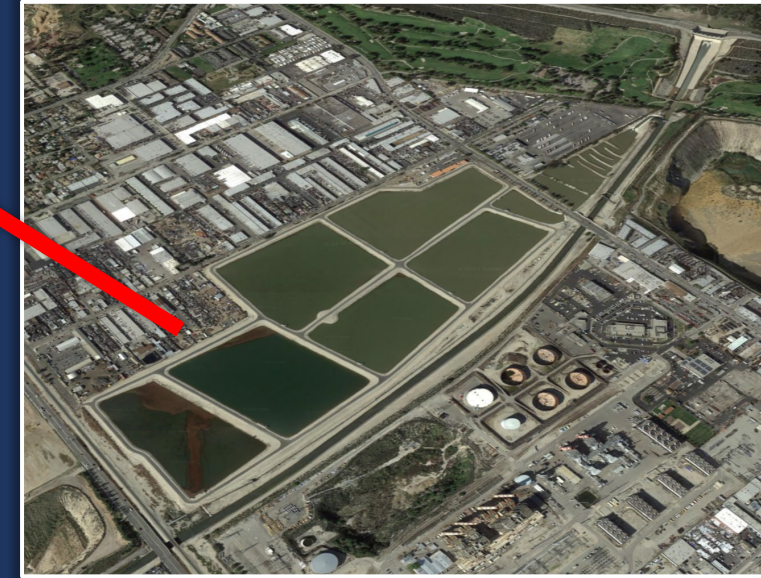
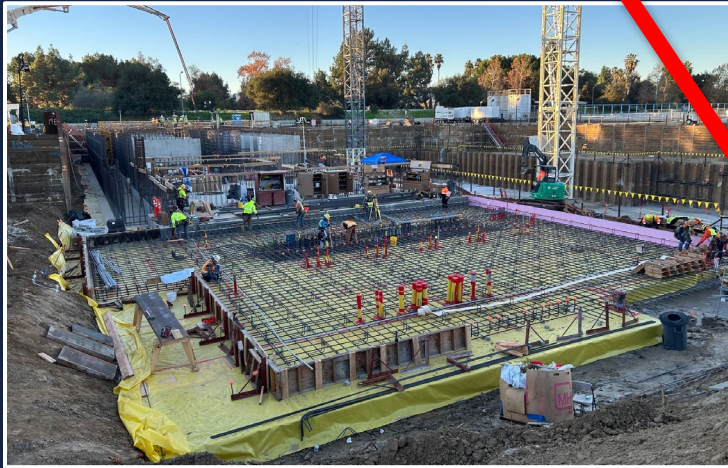
- LA Groundwater Replenishment
- Pure Water Los Angeles











Direct Potable Reuse

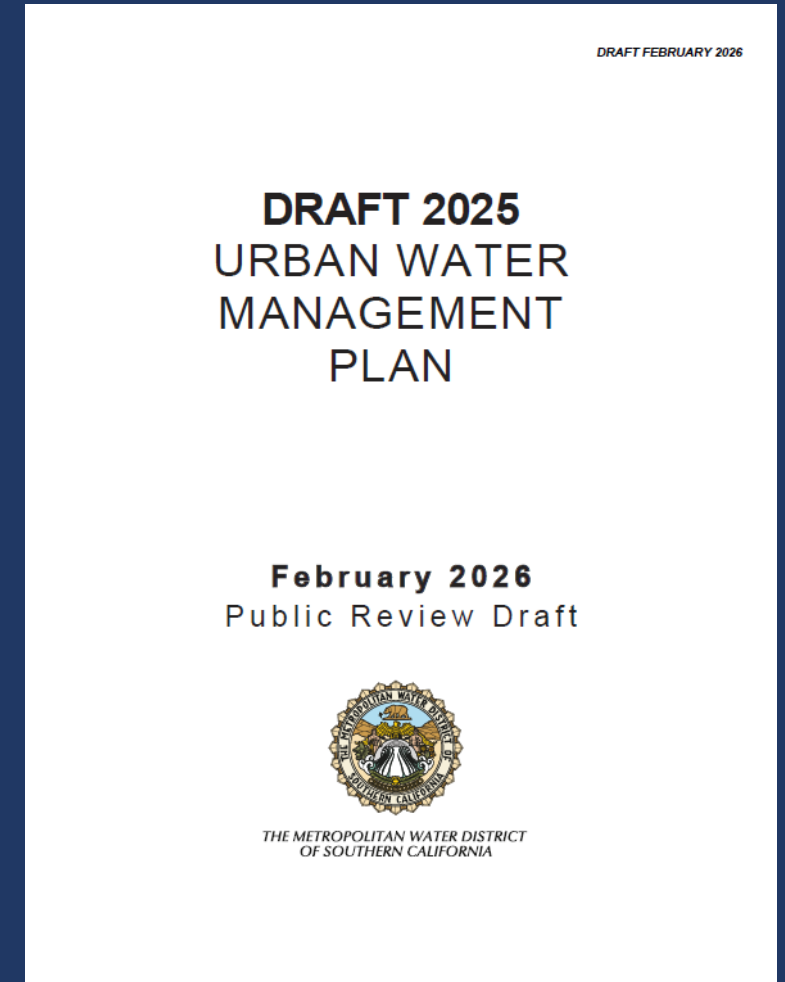
- Headworks DPR Pilot Facility
- LA Groundwater Replenishment
- Pure Water Los Angeles

Groundwater Replenishment Project to Replenish San Fernando Basin with Highly Purified Recycled Water



Coordination With MWD UWMP Process Is A Critical Component of Reliability Analysis

Scenario	Sufficient Supplies to Meet Projected Demands	Supplies Exceeding Demand
Average Year (2026-2050)		
Single-Dry Year (2026-2050)		
Multiple-Dry Years (2026-2050)		
Drought Risk Assessment (2026-2030)		



LADWP Demonstrates Sufficient Water Supply to Meet Demands Under All Reliability Scenarios Through 2050

Exhibit 9B
Service Area Reliability Assessment for **Average Year**

Demand and Supply Projections (in acre-feet)	FY 24/25 Actuals	Average Year (30-year median hydrology) Fiscal Year Ending June 30				
		2030	2035	2040	2045	2050
Water Demand	475,900*	472,300	457,200	462,900	467,000	467,700
Supplies						
Los Angeles Aqueduct	232,200	193,400	193,400	193,400	193,400	193,400
Groundwater	6,100	103,800	109,300	109,300	109,300	109,300
Recycled Water – LA GWR	-	22,000	40,000	40,000	40,000	40,000
Recycled Water – Non-potable Use	13,200	19,200	19,300	19,400	19,600	19,700
Metropolitan Water District	224,400	133,900	95,200	100,800	104,700	105,300
Total Supplies	475,900	472,300	457,200	462,900	467,000	467,700

*Includes demand to and (from) storage
Note: Values rounded to nearest 100 AF

Exhibit 9C
Service Area Reliability Assessment for **Single Dry Year**

Demand and Supply Projections (in acre-feet)	FY 24/25 Actuals	Single Dry Year (FY 2021/22 hydrology) Fiscal Year Ending June 30				
		2030	2035	2040	2045	2050
Water Demand	475,900*	472,300	457,200	462,900	467,000	467,700
Supplies						
Los Angeles Aqueduct	232,200	59,400	58,900	58,300	57,800	57,200
Groundwater	6,100	103,800	109,300	109,300	109,300	109,300
Recycled Water – LA GWR	-	22,000	40,000	40,000	40,000	40,000
Recycled Water – Non-potable Use	13,200	19,200	19,300	19,400	19,600	19,700
Metropolitan Water District	224,400	267,900	229,700	235,900	240,300	241,500
Total Supplies	475,900	472,300	457,200	462,900	467,000	467,700

*Includes demand to and (from) storage
Note: Values rounded to nearest 100 AF

LADWP Demonstrates Sufficient Water Supply to Meet Demands Under Drought Risk Assessment Through 2030

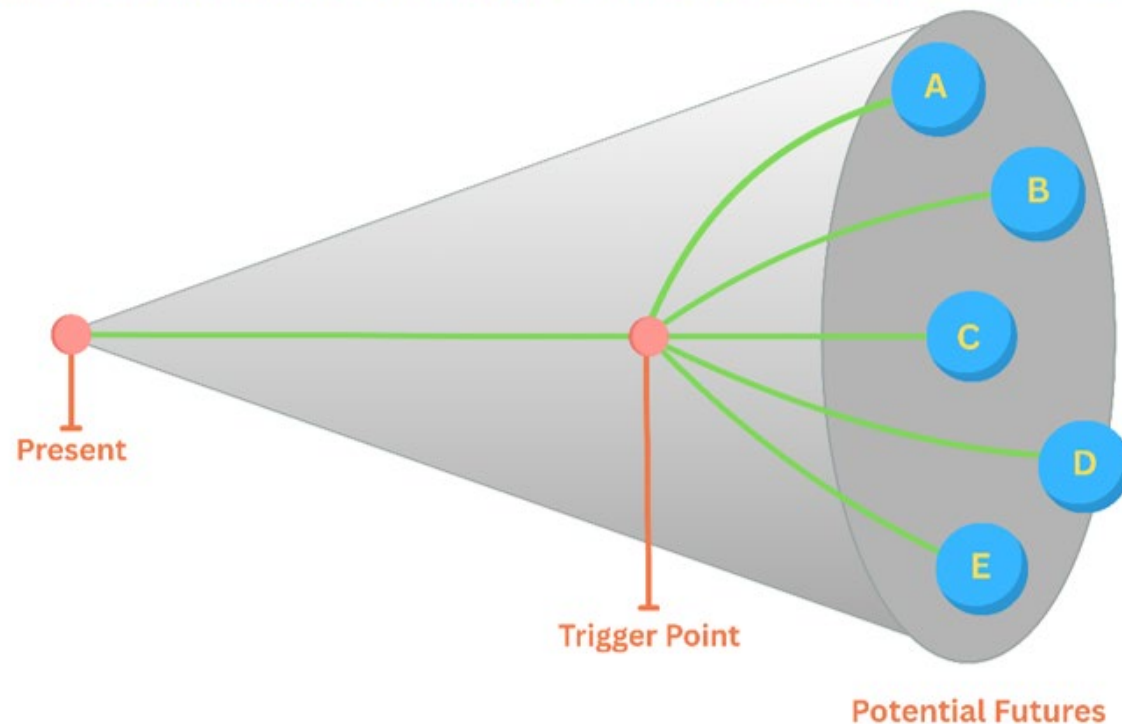
*Exhibit 9E
Service Area Drought Risk Assessment*

Demand and Supply Projections (in acre-feet)	FY 24/25 Actuals	Drought Risk Assessment (FY 2011/12 to FY 2015/16 hydrology) Fiscal Year Ending June 30				
		2026	2027	2028	2029	2030
Water Demand	475,900*	474,100	473,400	473,000	472,500	472,300
Supplies						
Los Angeles Aqueduct	232,200	90,500	71,900	66,800	61,700	184,800
Groundwater	6,100	92,300	94,900	94,900	94,900	103,800
Recycled Water – LA GWR	-	-	-	-	22,000	22,000
Recycled Water – Non-potable Use	13,200	13,700	16,100	16,300	17,900	19,200
Metropolitan Water District	<u>224,400</u>	<u>277,600</u>	<u>290,500</u>	<u>295,000</u>	<u>276,000</u>	<u>142,500</u>
Total Supplies	475,900	474,100	473,400	473,000	472,500	472,300

*Includes demand to and (from) storage
Note: Values rounded to nearest 100 AF

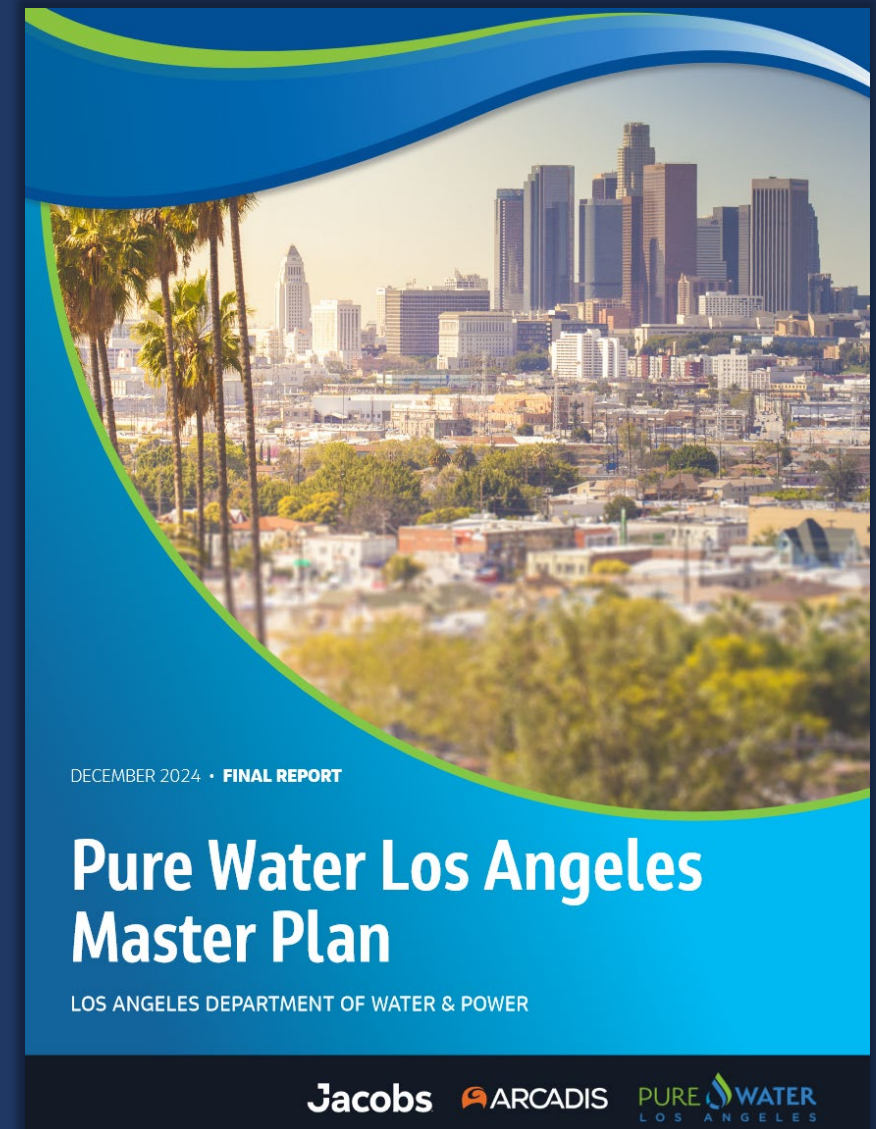
Planning Scenarios Beyond the Scope of the UWMP Are Considered Under Other Planning Efforts

*Exhibit 10A
Illustration of Scenario Planning, Potential Futures, and Cone of Uncertainty*



Pure Water Los Angeles Planning Efforts Are Ongoing

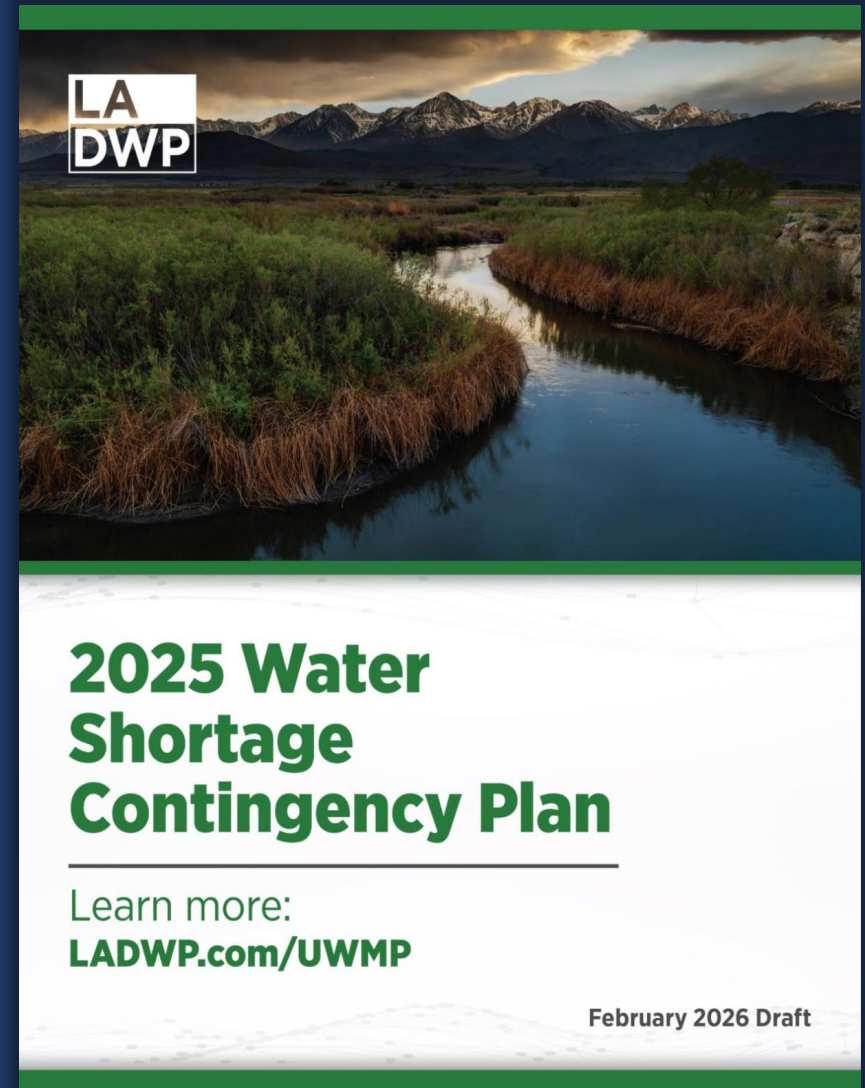
- Maximize reuse of treated wastewater from Hyperion Water Reclamation Plant
- Provide environmental benefits by reducing discharge to Santa Monica Bay
- Website: PureWaterLosAngeles.com



The Water Shortage Contingency Plan Is a Stand-alone Plan Included With the UWMP

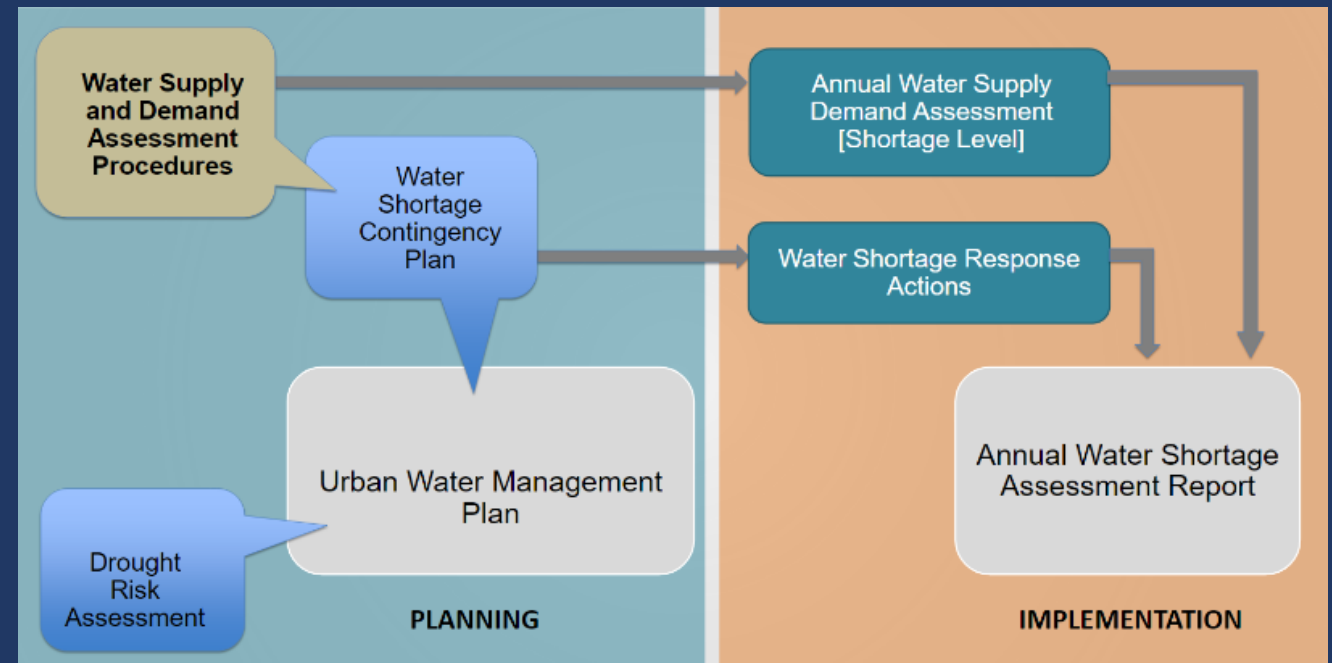
Water Shortage Contingency Plan Includes:

1. Process on how to identify and respond to shortages
2. Establishes six standard water shortage levels
3. Identifies response actions that may be implemented to respond to shortages



Process for Determining Water Shortage Conditions Guided by Annual Water Supply and Demand Assessment

- Evaluate water demand and supply availability
- Sufficient supplies to meet water demands signals no shortage
- Magnitude of shortage to determine response to identified shortage



Water Shortage Responses Guided by City's Emergency Water Conservation Plan (Conservation Ordinance)

2022 Drought Response:

Know Your Watering Days

Addresses End in	SUN	MON	TUE	WED	THU	FRI	SAT
ODD		💧		✗		💧	
EVEN	💧		✗		💧		

Current Watering Days:

Know Your Watering Days

Addresses End in	SUN	MON	TUE	WED	THU	FRI	SAT
ODD		💧		💧		💧	
EVEN	💧		💧		💧		

Appendix B Emergency Water Conservation Ordinance

ORDINANCE NO. 184250

An ordinance amending Article I of Chapter XII of the Los Angeles Municipal Code to clarify prohibited uses and modify certain water conservation requirements of the Water Conservation Plan of the City of Los Angeles.

**THE PEOPLE OF THE CITY OF LOS ANGELES
DO ORDAIN AS FOLLOWS:**

Section 1. Article I of Chapter XII of the Los Angeles Municipal Code is amended in its entirety to read as follows:

ARTICLE I

EMERGENCY WATER CONSERVATION PLAN

SEC. 121.00. SCOPE AND TITLE.

This Article shall be known as The Emergency Water Conservation Plan of the City of Los Angeles.

WSCP Standard Water Shortage Levels Are Aligned With Conservation Ordinance and Additional Actions

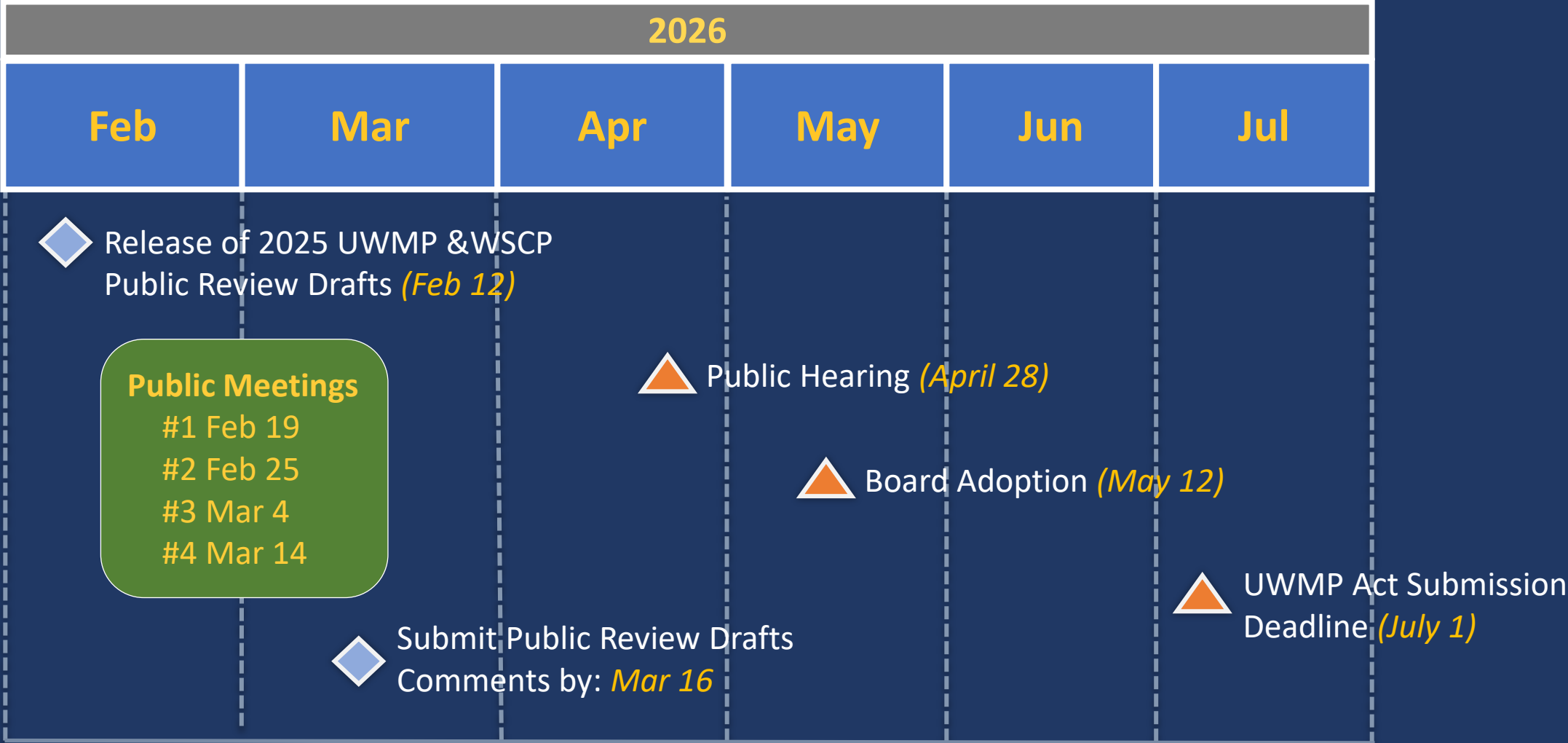
Exhibit 9F

Summary of LADWP Water Shortage Level Response Actions

Water Shortage Level	Percent Shortage	Emergency Water Conservation Plan Phase	Additional WSCP Actions
No Shortage	0%	Phase 1 & Phase 2	
Shortage Level 1	Up to 10%		Operation Changes
Shortage Level 2	Over 10% and up to 20%	Phase 3	
Shortage Level 3	Over 20% and up to 30%	Phase 3	Supply Augmentation
Shortage Level 4	Over 30% and up to 40%	Phase 4	
Shortage Level 5	Over 40% and up to 50%	Phase 5	
Shortage Level 6	Greater than 50%	Phase 6	

Note: WSCP Actions identified under specific shortage levels are cumulative and will encompass all actions identified in preceding shortage levels.

2025 UWMP & WSCP Development Timeline and Milestones



Discussion & Questions

Contact Email For Formal Comment:

UWMP@ladwp.com

More information available at

[LADWP.com/UWMP](https://www.ladwp.com/UWMP)