



# **Commercial EV Charger Rebate Program Webinar**

Electric Transportation Programs

March 18, 2025

# Agenda

- Program Overview
- Requirements and Rebate Amounts
- Open Enrollment Funding
- Steps Required Before Applying
- How to Apply
- Additional Resources
- Q&A

# Program Overview

## Level 2 Chargers

- Supports installations in multifamily dwellings, shopping centers, community centers, and workplaces

## DC Fast Chargers

- Supports fast charging in public areas and mixed-use buildings

## Chargers for Medium- and Heavy-Duty Vehicles

- Supports the electrification and adoption of emerging medium- and heavy-duty EVs

# Requirements and Rebate Amounts

# Qualifying Chargers: Level 2

## Level 2

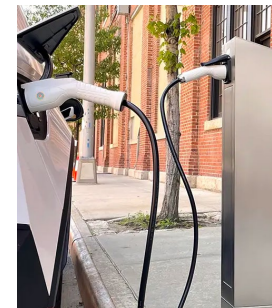


- **Input Voltage:** 208 V to 277 V
- **Output Power:** Capable of 6.2 kW
- ***New!* Technical Updates:** Expanded eligibility to SAE J3400 (NACS/Tesla) and AC socket-outlet products that operate with a carry-along cable assembly. NEMA 14-50 plug-in configurations are not eligible.
- **Connector Standard:** SAE J1772 or SAE J3400
- **Certification:** Certified and listed by a nationally recognized testing laboratory (NRTL), such as UL



## Load Management:

Dynamic load management may be used. Level 2 chargers may not provide less than 8 amps to fuel a single EV under the worst-case load management scenario.



# Level 2 Rebate Amounts

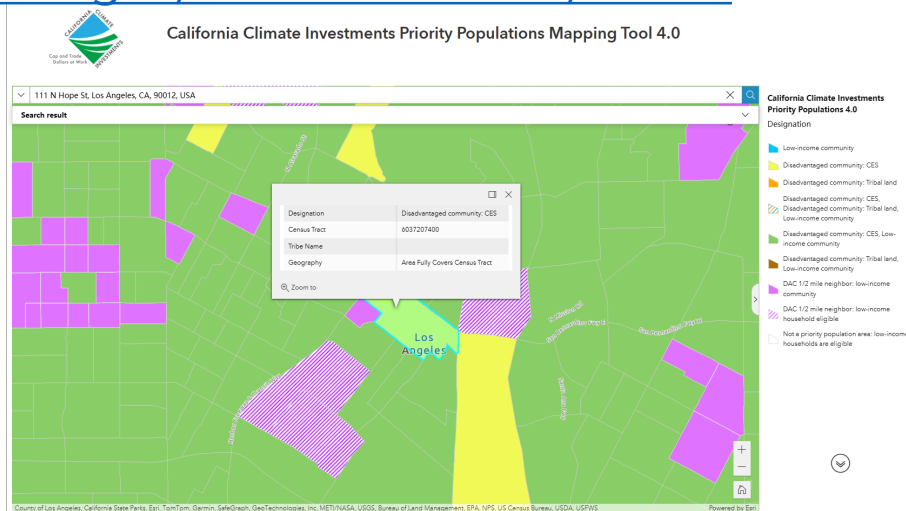
Level 2 Chargers	Max Rebate Amount Per Charger
Located in a Disadvantaged Community (DACs)	\$5,000
Not Located in a Disadvantaged Community	\$4,000

- **New! Additional Port Removal:** Removal of the \$500 additional port adder
- **New! Rebate Limit per Premises:** Rebate limit increased per premises from 40 to 80
- **Vehicle Requirement:** Chargers used to charge light-duty, on-road, plug-in EVs
- **Access Requirement:** Must be accessible to employees, customers, visitors or tenants (no public access requirement)

# How is DAC Eligibility Determined

## Disadvantaged Communities:

- Based on CalEPA's designation of a DAC using CalEnviroScreen 4.0 scores
- To determine if a premises is located in a DAC, customers may use: <https://webmaps.arb.ca.gov/PriorityPopulations/> OR <https://oehha.ca.gov/calenviroscreen/sb535>



# Qualifying Chargers: DCFC



**Minimum Guaranteed Output:** 50 kW

**Eligible Connectors:** SAE CCS, SAE J3400



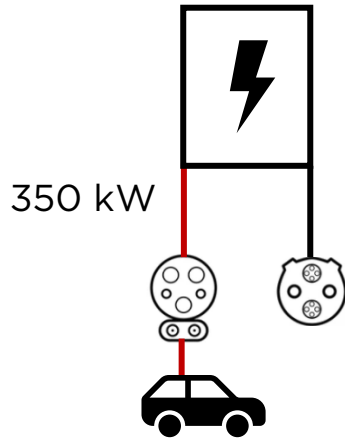
**Certification:** Certified and listed by a nationally recognized testing laboratory (NRTL)

**Networking Requirement:** All DCFCs rebated must be networked, via Wi-Fi, ethernet, or cellular and be connected to a back-end network for the duration of the required minimum in-service period (5 years)

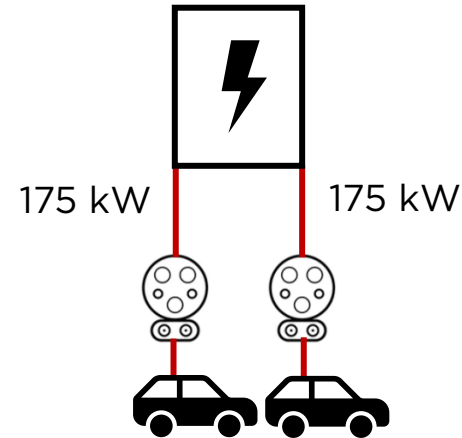
***New!* Minimum % CCS Removed:** Removed the previous requirement for 50% minimum CCS chargers at a site

# DCFCs and Load Management

Dynamic load management may be used. DCFC tiers are based on the output power under the worst-case scenario for charging speeds where the least amount of power would be available for each individual vehicle.



One Tier 3 Rebate  
(275 kW+)



Two Tier 2 Rebates  
(150-274 kW)

# DCFC Rebate Amounts

DC Fast Chargers for Light-Duty EVs	Guaranteed Output (kW) per Charger	Max Rebate Amount Per Charger (non-DAC)	Max Rebate Amount Per Charger (DAC)	Publicly Accessible Max per Site	Restricted Access Max per Site
Tier 1	50 to 149	\$20,000	\$25,000	20	2
Tier 2	150 to 274	\$55,000	\$68,750		
Tier 3	275+	\$100,000	\$125,000		

## Vehicle and Access

**New! Rebate Cap:** Up to twenty DCFC rebates per premises. Max of two DCFC rebates may have restricted access to the public.

**New! Adder:** Chargers installed in DACs may receive an adder of 25 percent.

**Public Access:** DCFCs are considered publicly accessible if available to the public at least 18 hours a day, seven days a week, excluding holidays.

# Qualifying Chargers: MHD EVs

## MHD



**Output power:** Capable of 6.2 kW or more for AC chargers and 24 kW or more for DC chargers

- Up to \$30,000 for AC chargers
- Up to \$125,000 for DC chargers
- Max of \$2,000,000 per site

**Connector standard:** No requirement

**Certification:** Certified/listed by NRTL or field tested with approval by LA Building and Safety Electrical Testing Laboratory (LADBS-ETL) or testing agency recognized by LADBS

## Vehicle Requirements



**Vehicles:** Must be used to charge on-road, plug-in MHD EVs:

- Class 3 to Class 8 Vehicles
- The vehicle(s) must be eligible for financial incentives by a government agency of the state of California
- Charger owner and the vehicle owner/lessee may be different entities
- Proof of purchase/lease of one vehicle required for each charger rebate

# Chargers for MHD EVs Rebate Amounts

Chargers for Medium-and Heavy-Duty EVs	Guaranteed Output (kW) per Charger	Max Rebate Amount per Charger	Max Amount per Site
AC-1	6.2 to 49	\$10,000	\$2,000,000
AC-2	50 to 99	\$20,000	
AC-3	100+	\$30,000	
DC-1	24 to 49	\$35,000	
DC-2	50 to 99	\$60,000	
DC-3	100 to 149	\$100,000	
DC-4	150+	\$125,000	

# General Installation Requirements

## **LADWP Service:**

The program is open to all LADWP customers who receive commercial electrical service or service supplying a grouping of single-family accommodations, such as a Homeowners Association. Chargers installed on an individually metered living unit to serve a single residential customer do not qualify under the Program.

## **Installation Date:**

All chargers must be installed on or after June 1, 2024.

## **Minimum Service Period:**

LADWP customers must agree to keep chargers in service for a minimum of five years.

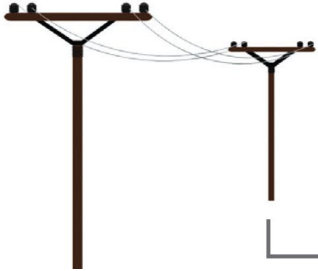
**Engineering Approval:** All customers must obtain approval from LADWP before deploying the chargers.

# Eligible Costs

## Utility Service Infrastructure

## EV Supply Equipment

Utility Distribution Network



Utility Pad Mounted Transformer



Meter and Switchgear



EVSE



Electric Vehicle



Eligible installation costs include hardware, labor, networking, and maintenance costs.

Ineligible costs include deposits made to LADWP for transformers and costs incurred for requirements of the Los Angeles Green Building Code.

# Open Enrollment Funding

# Funding Details

Q2 2025

Open Enrollment  
April 21st – May 9th

Level 2

\$32M

DCFC

\$15M

If funds remain available for a program segment after May 9, 2025 at 4:00 p.m., enrollment will stay open on a first-come, first-served basis.

# **Steps Required Before Applying**

# Steps Required Before Applying

## Before Applying: Level 2 Chargers

1. **Submit plans:** First, submit a complete [Commercial EV Charger Customer Submittal Package](#) to ensure that the utility infrastructure is sized for the incremental load resulting from your planned deployment.
2. You must receive an email from LADWP's EV Service Design Group confirming that LADWP has received a complete Customer Submittal Package.


## Before Applying: DCFCs and/or Chargers for MHD EVs

1. **Submit plans:** First, submit a complete [Commercial EV Charger Customer Submittal Package](#) or request and pay for a Feasibility Study.
2. You must receive an email from LADWP's EV Service Design Group confirming that LADWP has received a complete Customer Submittal Package OR receive an email confirming payment of a Feasibility Study.

**Note:** If you are applying for a project with both Level 2 chargers and DCFCs, you must apply under separate applications.

# How to Submit your EV Service Request

Visit [LADWP.com/EV](https://www.ladwp.com/EV)  
⇒ Before You Install a  
Charger

Start  Complete

## Meter & Discount Information

*\*Indicates required field.*

*LADWP engineering review and approval of your EV charging installation plans is required to qualify for the LADWP EV Charger Rebate Program*

\* Please select one of the following:

Option 1: Establish new service with a new revenue meter

I want a revenue meter to serve just the circuit that supplies power to my EV charger(s)

Option 2: Establish New Service with a New TOU Revenue Meter

I want a separate TOU meter in addition to my existing meter to serve just the circuit that supplies power to my EV charger. I will receive the EV discount rate if I charge the EV at night between the hours of 8:00 p.m. and 10:00 a.m. on weekdays or all day on weekends.

OPTION 3: Existing Service

I want to add EV chargers to my current meter service. Note: Under new Commercial EV Charging Station Rebate Program terms and conditions, statistical meters are no longer required to receive the maximum rebate amount.

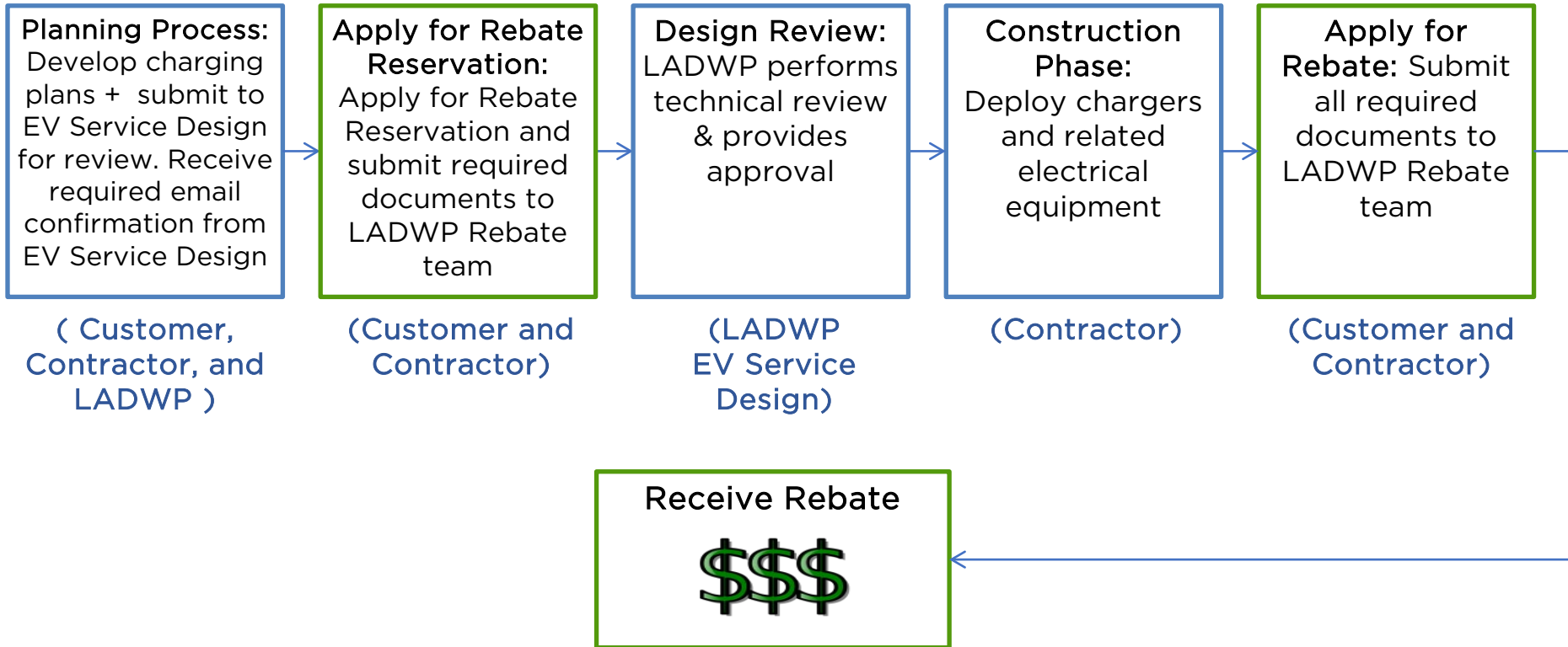
Option 4: Feasibility Study

I want LADWP to perform a feasibility study for this site based on preliminary information since a complete submittal package (single line diagram, site plan, load schedule, etc.) is not yet available.

*I understand a non-refundable engineering fee of \$1,500 per site is required and must be paid in advance prior to LADWP performing the study. Should the project proceed, the \$1,500 will be applied toward the total final estimated cost of the job.*

# How to Apply

# Overview of Rebate Reservation Process



Note: The customer must meet all the program requirements to receive the rebate after receiving a rebate reservation.

# Reservation Milestones



**New!** The previous 3-month milestone requirement to submit an initial permit and engineering approval has been removed.

# How to Apply

Applications must be submitted electronically via [LADWP.com](https://LADWP.com) for customers applying to the Level 2 and DCFC program segments. The LADWP account holder:

1. Registers for an LADWP account before the open enrollment period.
2. Gathers all required electronic attachments of all supporting documents. Legible electronic copies (PDFs) and photographs (JPEG/JPG files) are acceptable.
3. Logs in to access the new, electronic application between April 21, 2025, and May 9, 2025, and submits a complete application with the required attachments. Note: the online session times out after thirty (30) minutes of inactivity. Ensure all file contents are clear and legible.

**Note: Applications submitted during the open enrollment period receive the same level of priority.**

# How to Apply - Exceptions

## PDF Application

A PDF version of the application will be available by request during open enrollment **only** for projects without existing electric service or if applying for chargers to fuel medium- and heavy-duty vehicles. The request must be made to [pluginla@ladwp.com](mailto:pluginla@ladwp.com) before open enrollment closes at 4:00 p.m. on May 9, 2025 to be accepted within the open enrollment period. Please include the installation address and LADWP Work Request number in your email.

## Technical Difficulties

If you are facing technical difficulties with the electronic application during open enrollment, customers must contact [pluginla@ladwp.com](mailto:pluginla@ladwp.com) with a screenshot of the error prior to 4:00 p.m. on May 9, 2025 to request assistance. Applicants may be given a PDF version of the application on a case-by-case basis. Any issues not reported before open enrollment closes will not be granted exceptions.

# Information Needed during Application Part 1

## General Information

- 1. Contractor Details:** Contractor Profile Number (if provided by contractor)
  - Alternatively: Your primary contractor's name, email address, state license number, phone number, mailing address, and if you would like to include that contact in notifications regarding your application and its status
- 2. Payment Details:** Name and email address of the payee if you are assigning payment to a third party and if you would like to include that in notifications regarding your application and its status
- 3. Information about the installation:**
  - Whether you are applying for Completed Deployment or Reservation
    - If the chargers are deployed: installation date
  - Whether the installation address is located in a Disadvantaged Community
  - Primary use of the charger(s): Workplace, Fleet, Public, Building Residents, or Other (specify)
- 4. Third-party financial incentives** received or anticipated to be received for the purchase and/or installation of the chargers rebated
- 5. An electronic copy of the completed Program Spreadsheet**

# Information Needed during Application Part 2

## 1. For Level 2 rebates:

- Number of Level 2 Chargers
- Total number of parking spaces available to employees, customers, visitors, or tenants
- LADWP Work Request Number (assigned to you by LADWP's EV Service Design Group after submitting your electrical plans)
- An electronic copy of the email confirmation of a complete Customer Submittal Package

## 2. For DCFC rebates:

- Number of Tier 1 rebates (50 to 149 kW Output)
- Number of Tier 2 rebates (150 to 274 kW)
- Number of Tier 3 rebates (275 kW+)
- Number of eligible chargers with either public access or with restricted access.
  - Public Access (20 max.)
  - Restricted Access (2 max.)
- LADWP Work Request Number (assigned to you by LADWP's EV Service Design Group after submitting your electrical plans or feasibility study request)
- An electronic copy of the email confirmation of a complete Customer Submittal Package OR payment receipt for a \$1,500 Feasibility Study

# Information Needed during Application Part 3

## For All Completed Deployments:

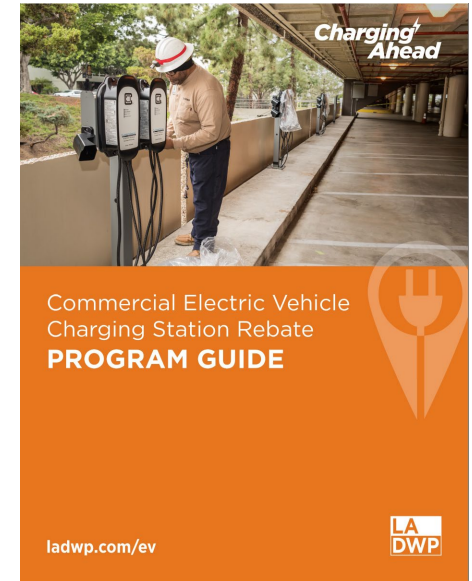
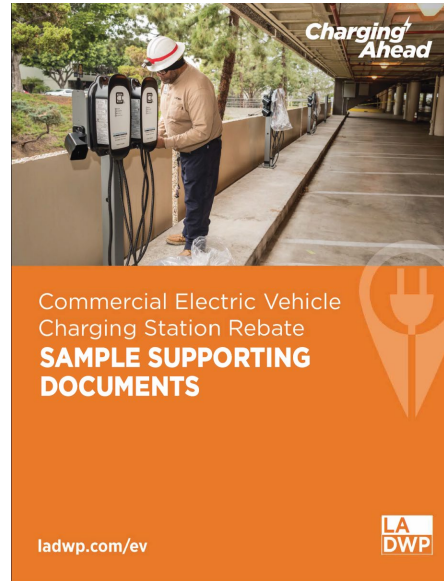
1. **LADWP EV Service Design Approval** (Adequate Facility Letter or Service Commitment Letter) issued by LADWP in connection with the deployment
2. **Contracts** with vendors and contractors supporting the deployment of chargers, including name, address, and telephone number of the licensed contractor/company, installation address, installation date, itemized installation costs, and itemized EV charger information that matches paid charger invoice(s)
3. **Itemized invoice(s)** and proof of payment for chargers and installation, including each of the following: purchase date, retailer name, address, and phone number, make, model number, and quantity of qualifying charger(s)
4. **Charger specification sheet** issued by the manufacturer for each charger model shown in the Program Spreadsheet
5. **Final permit** issued by Los Angeles Department of Building and Safety (LADBS) or the Authority Having Jurisdiction (AHJ) with a “finalized” status demonstrating that you passed inspection
6. **A photo, in color, of the device nameplate** for each EV charger installed (including serial number, model number, manufacture date, and certification mark from a nationally recognized testing lab (NRTL))
7. A completed and signed **W-9 form** for the payee of the rebate

# **Additional Resources**

# Additional Resources

Additional resources available for customers:

- Terms and Conditions
- Program Spreadsheet
- Program Guide
- Sample Supporting Documents
- Contractor Profile Form
- FAQs
- Customer Workshop on April 9, 2025



# Contractor Profile Form

A Contractor Profile gives contractors the opportunity to simplify the application process for LADWP customers applying to the Program.

As a contractor, registering for a profile will ensure that LADWP has current contact information on file for your business. Registered contractors will be provided with an LADWP Contractor Profile Number that should be shared with clients to use in their application.

Obtaining a Contractor Profile Number is optional, but **highly recommended**. Contractors may contact [pluginla@ladwp.com](mailto:pluginla@ladwp.com) to obtain a form.



# Charging Ahead

- Visit [www.ladwp.com/commercialEVrebate](http://www.ladwp.com/commercialEVrebate) for program information and updates on future changes
- For any additional questions, please reach out to a program support specialist at: [pluginla@ladwp.com](mailto:pluginla@ladwp.com) or (866) 484-0433
- To sign up for an LADWP online account, visit [www.ladwp.com](http://www.ladwp.com) and click the link New User? Register Now

## Questions?