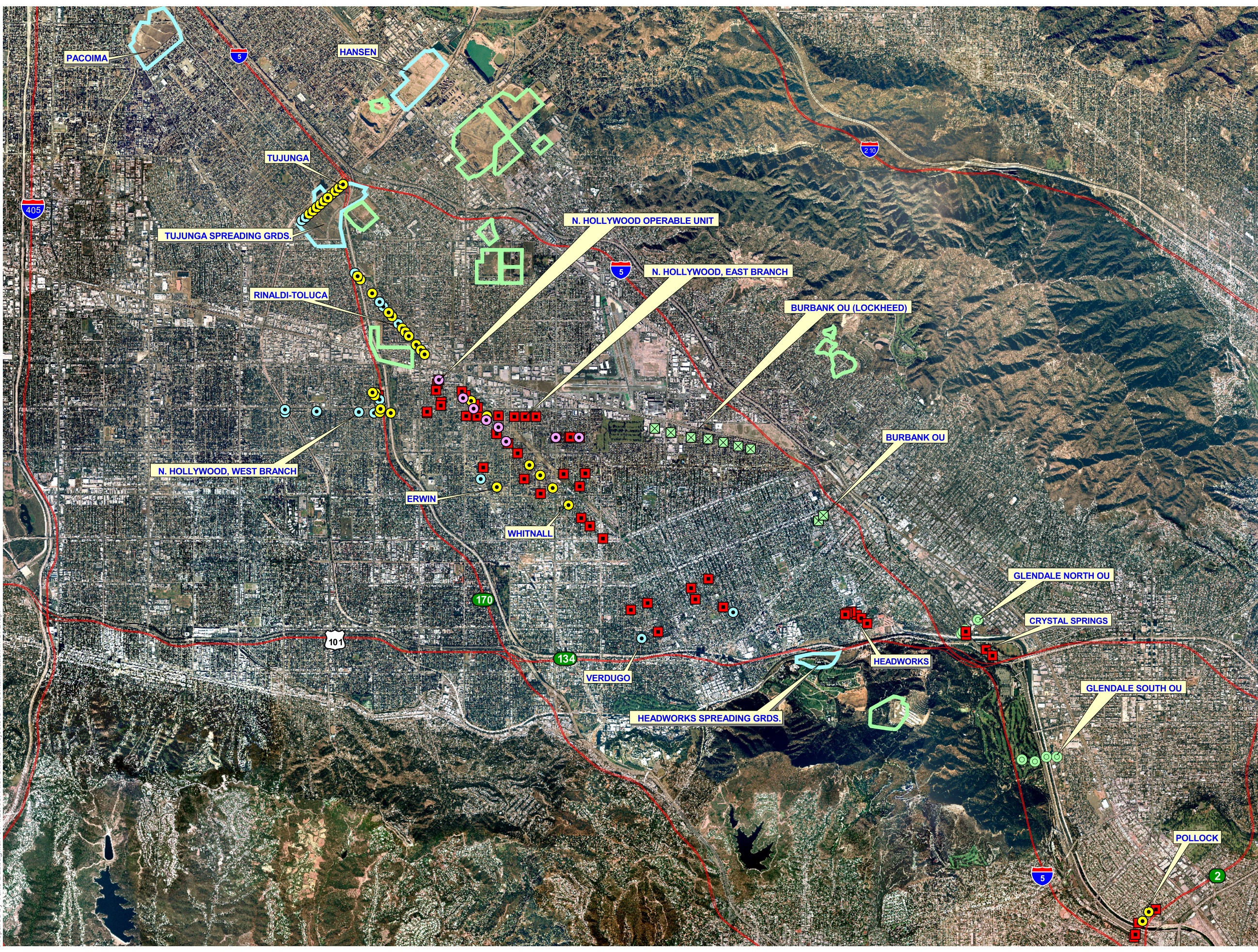


Groundwater Contamination in San Fernando Basin



LEGEND

-  17 Active Wells Below MCL
-  44 Active Wells Above MCL
-  54 Inactive Wells Above MCL
-  NHOU Wells
-  Landfill
-  Spreading Grounds



Prepared by Vahe Dabbaghian on 4/23/08. File: C:\GIS Projects\GW Contamination in SFB.apr