

---

# Chatsworth Pond Update

## Public Meeting – August 6, 2015

---

# Agenda Overview

- Meeting Purpose
- Introductions
- Presentation
  - History of Site
  - Current Water Situation
  - Possible Options
- Questions and Comments

## Meeting Purpose

- Provide an update on Chatsworth Pond water situation
- Share possible options for long-term sustainability and maintenance of the pond
- Solicit input from community members on additional options to consider, questions and comments

# Process for Providing Input

- Participate in Discussion/Q&A Portion of Meeting
  - Submit your question on a card for answer by project team
- Post ideas on the board
- Email or mail comments by August 21st



# Chatsworth Pond





# Chatsworth Pond



8-4-15

# Chatsworth Pond



8-4-15



## Current Situation and Issues

- Pond environment has important ecological and community value
- Prolonged drought and mandatory restrictions on potable water use
- Shallow water conditions have accelerated evaporation rates
- Non-native plant and animal species
- For emergency water, LA Fire Department has installed a seasonal cistern and LADWP built the existing heliport for LAFD and LACoFD use.
- LADWP is committed to working with the community to develop viable non-drinking water alternatives to manage the pond in a sustainable manner.

# Urgency of Water Use Restrictions

- Governor's Executive Order
- Mayor Garcetti's Executive Directive

# Actions Underway

## Immediate Actions:

- Relocated non-native turtles
- Trucking in non-potable water from construction sites
- Over 969,000 gallons delivered to date (typical family use for 6 years)
- Conducting biological resource inventory



**6-28-2015: Turtle Rescue**





**Water Truck Location**





**7-6-2015:  
Water Truck Delivery**



**7-29-2015: West side of pond, looking south**





**7-29-15: Coyote Footprint**



**7-29-15: Raccoon Footprint**



**7-29-15: Raccoon Footprint**



**7-29-15: Raccoon Footprint**





**8-3-15**

# Proposed Near Term Actions

## Clean Out Pond Sediments

- Initially the pond was constructed to be a stormwater detention basin
- Removing the silt is imperative for any potential option to work
- Address high evaporation rates

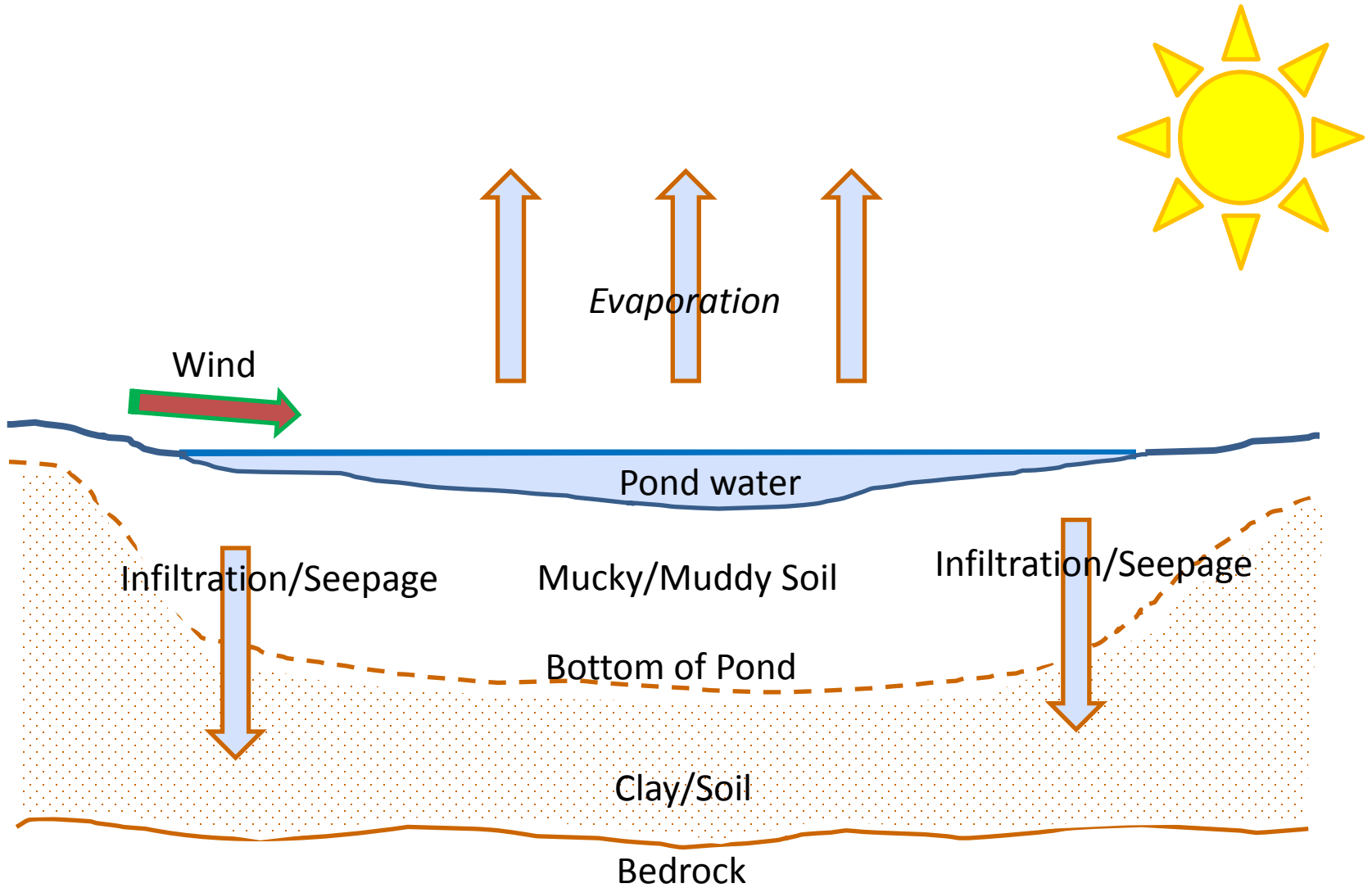




**7-29-15: Level of Silt**



**Water below the silt**



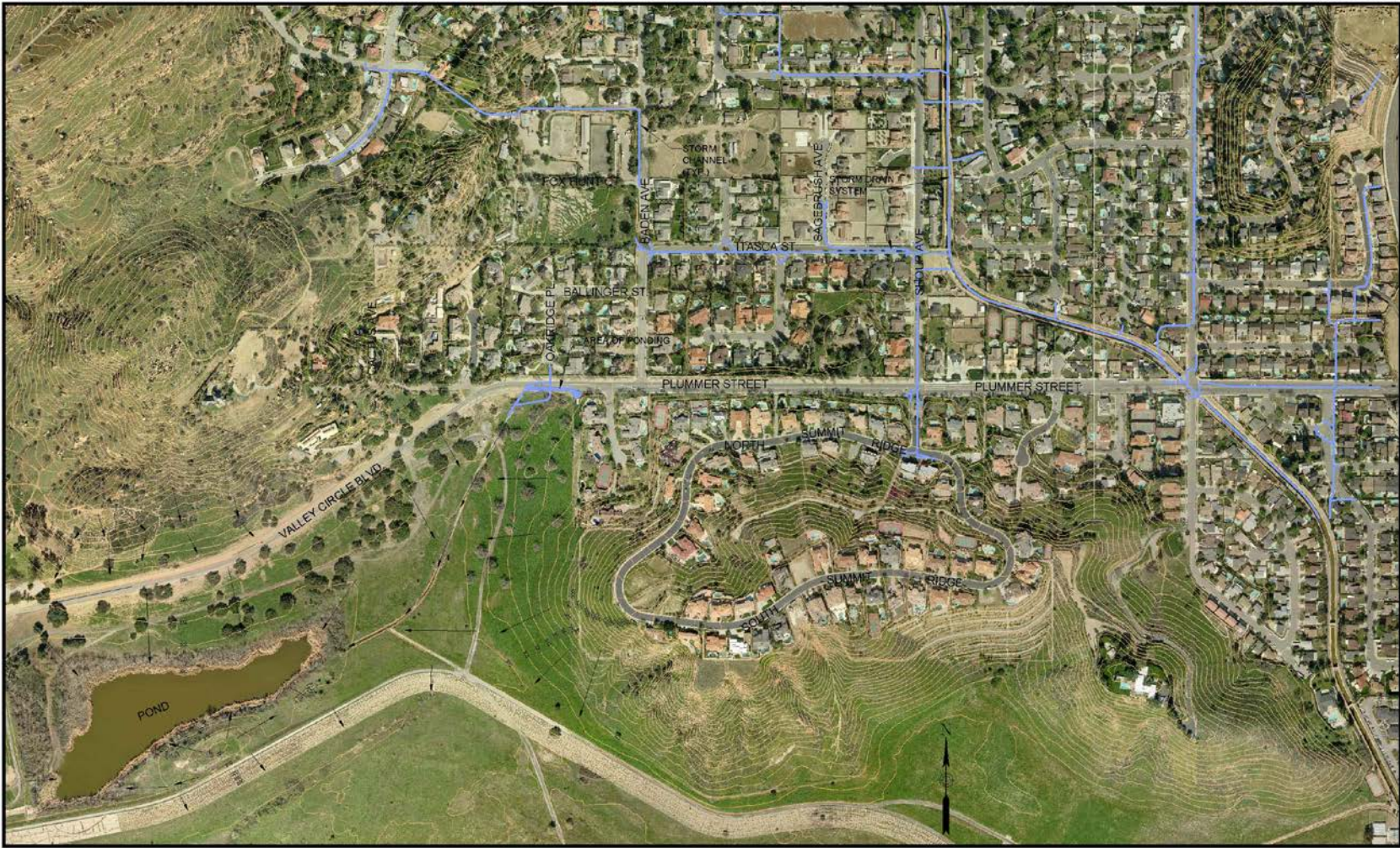
**Cross Section of Pond**



## Proposed Long-Term Actions

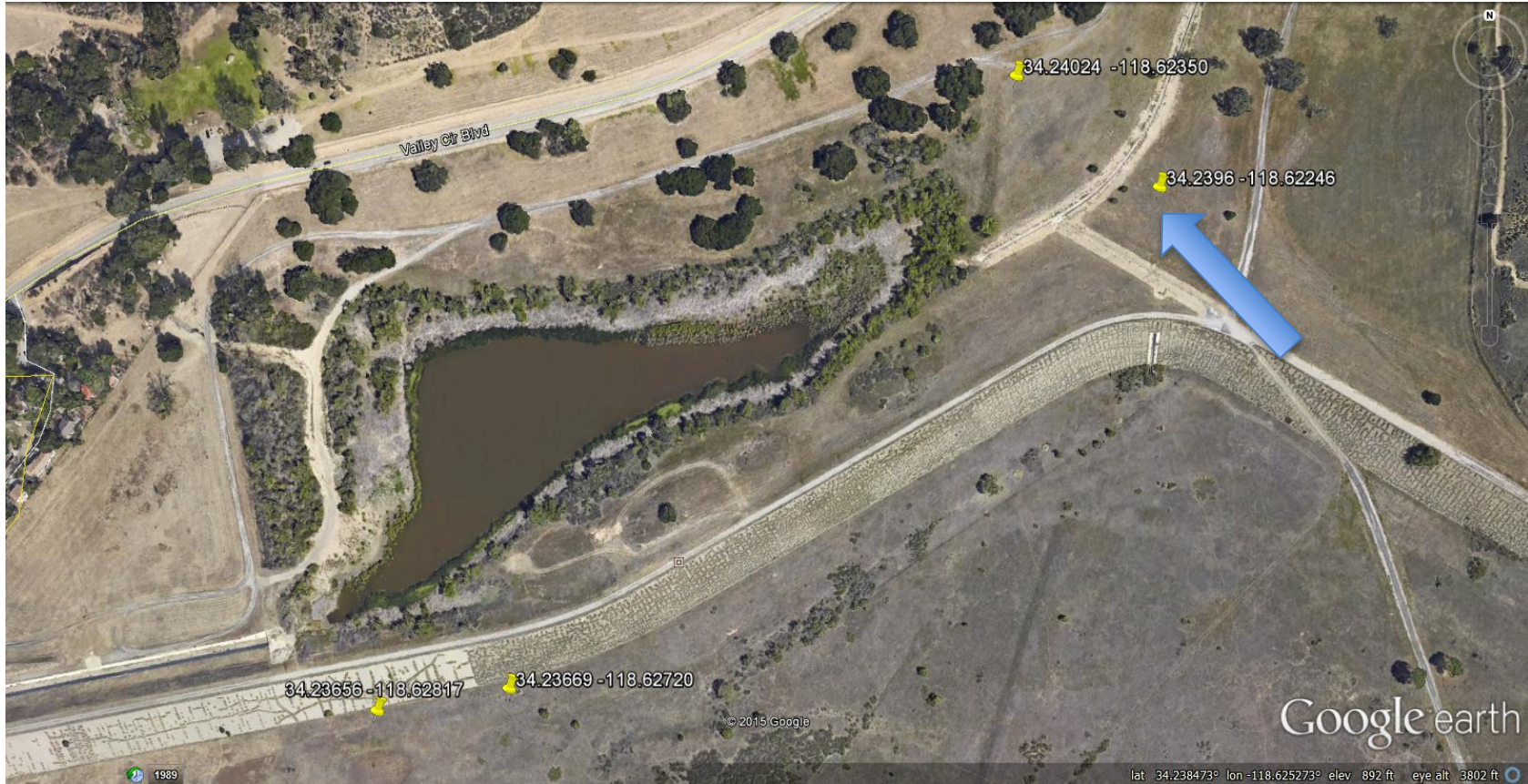
Explore long-term options for the maintenance and sustainability of the pond:

- Modified pond – minimum amount of water always there but amount depends on availability
- Increasing runoff diverted to pond
- Diverting water in storm drains to pond
- Periodically using limited amounts of direct groundwater from a new well located near the pond



**Map of Storm Drains and Runoff**





## 7-15-2015: Well Exploration



**7-15-2015: Well Exploration**

## Next Steps

- Continue with site analysis of existing options
- Evaluate new options
- Host follow up meeting to provide update on alternatives

## Stay Involved!

- Sign up for email updates and meeting notices
- LADWP contact:

Heidi Hiraoka, Property Manager

[Heidi.Hiraoka@ladwp.com](mailto:Heidi.Hiraoka@ladwp.com)

213-367-1057

# Discussion and Q&A